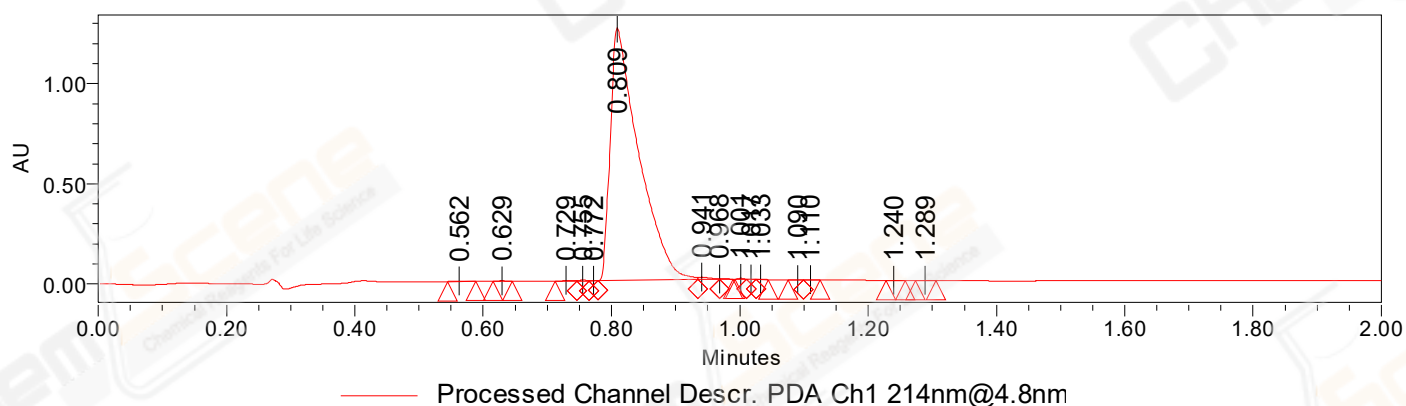


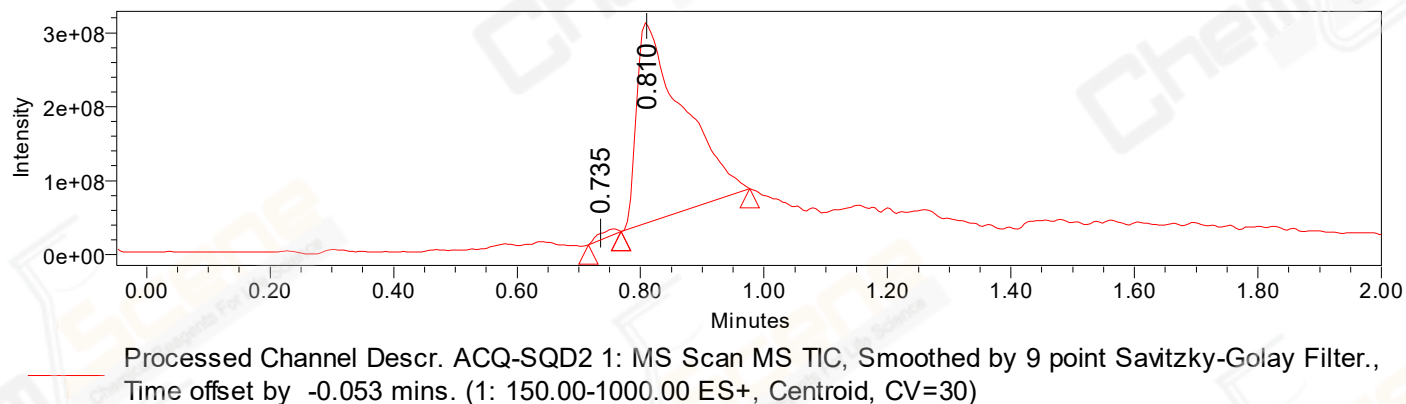
SAMPLE INFORMATION

CAS NO.: 149409-57-4	Acquired By: LY
Sample information: 2:C,4	Date Acquired: 10/18/2022 1:50:58 PM CST
Vial: 1	Acq. Method Set: 1_POS_2MIN
Injection #: 1	Date Processed: 10/19/2022 10:15:12 AM CST
Injection Volume: 1.50 ul	Processing Method: PDA_01, MS_scan
Run Time: 2.8 Minutes	Channel Name: PDA Ch1 214nm@4.8nm, MS TIC
Sample Set Name: 20221018	Column Name: A-RP-985

Auto-Scaled Chromatogram



Auto-Scaled Chromatogram



Peak Results

Channel Name: PDA Ch1 214nm@4.8nm

	RT	Width (sec)	Area	Height	% Area	Base Peak (Combined) (m/z)	Channel Name
1	0.562	2.650	2725	1923	0.07	153.02	PDA Ch1 214nm@4.8nm
2	0.629	1.750	2347	3044	0.06	430.46	PDA Ch1 214nm@4.8nm
3	0.729	2.050	3897	3797	0.10	218.29	PDA Ch1 214nm@4.8nm
4	0.755	1.100	3432	5073	0.09	218.17	PDA Ch1 214nm@4.8nm
5	0.772	0.850	1623	2883	0.04	221.21	PDA Ch1 214nm@4.8nm
6	0.809	9.300	3878002	1261160	98.90	372.21	PDA Ch1 214nm@4.8nm

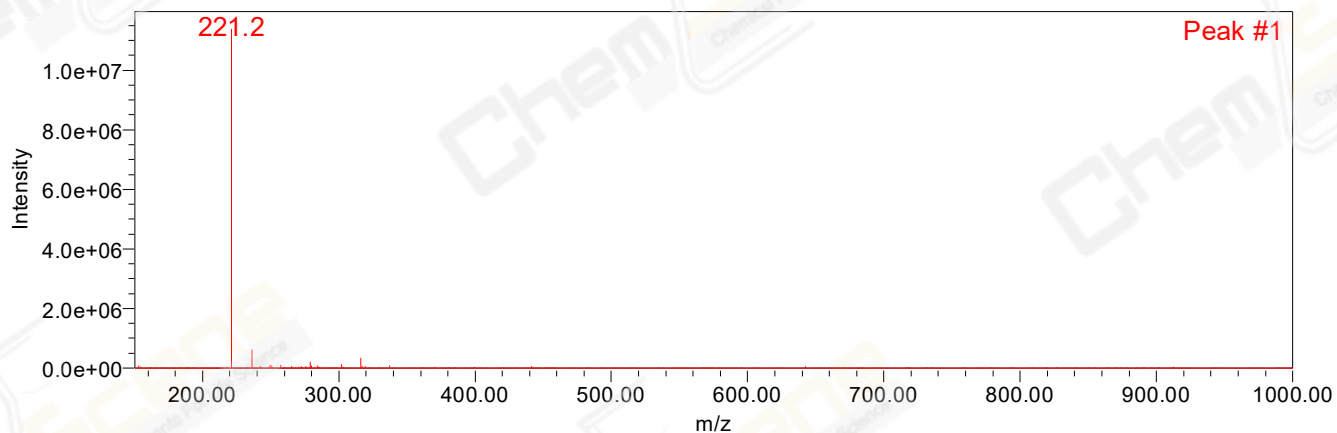
Peak Results
Channel Name: PDA Ch1 214nm@4.8nm

	RT	Width (sec)	Area	Height	% Area	Base Peak (Combined) (m/z)	Channel Name
7	0.941	2.050	16131	12661	0.41	357.25	PDA Ch1 214nm@4.8nm
8	0.968	1.250	2457	2903	0.06	356.21	PDA Ch1 214nm@4.8nm
9	1.001	1.100	3208	5156	0.08	390.20	PDA Ch1 214nm@4.8nm
10	1.017	0.900	1685	2309	0.04	390.18	PDA Ch1 214nm@4.8nm
11	1.033	1.100	1865	3057	0.05	152.99	PDA Ch1 214nm@4.8nm
12	1.090	1.450	1166	1360	0.03	152.02	PDA Ch1 214nm@4.8nm
13	1.110	1.550	1622	1936	0.04	612.26	PDA Ch1 214nm@4.8nm
14	1.240	1.800	359	398	0.01	152.07	PDA Ch1 214nm@4.8nm
15	1.289	1.900	763	807	0.02	152.92	PDA Ch1 214nm@4.8nm

Peak Results
Channel Name: MS TIC

	RT	Width (sec)	Area	Height	% Area	Base Peak (Combined) (m/z)	Channel Name
1	0.735	3.192	19689885	8865745	1.38	221.21	MS TIC
2	0.810	12.476	1404880595	272518928	98.62	356.21	MS TIC

Match Plot



Match Plot

