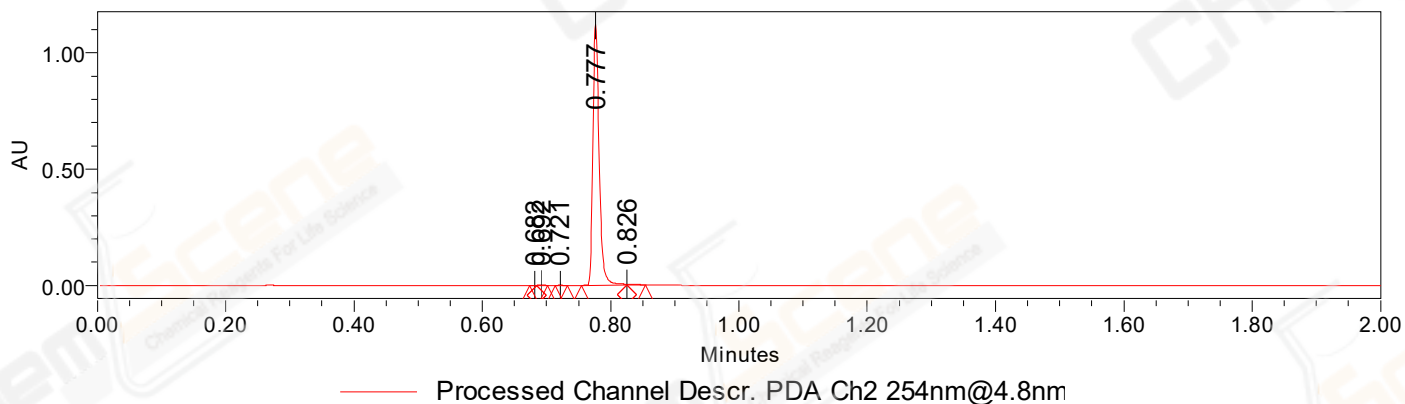


SAMPLE INFORMATION

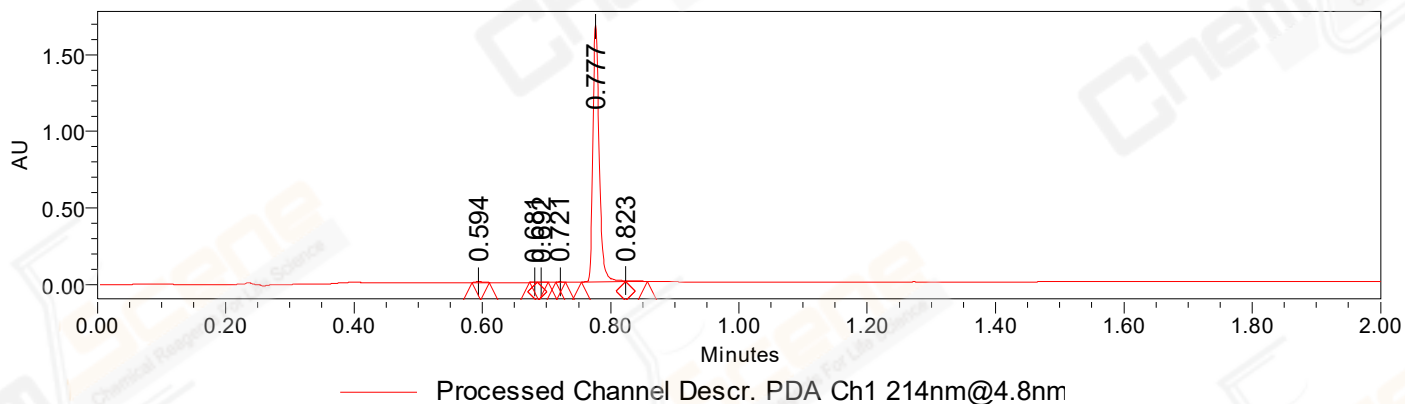
CAS NO.: 34221-41-5
Sample information: 1:B,6
Vial: 1
Injection #: 1
Injection Volume: 0.30 ul
Run Time: 2.8 Minutes
Sample Set Name: 20221027

Acquired By: LY
Date Acquired: 10/27/2022 4:02:59 PM CST
Acq. Method Set: 1_POS_2MIN
Date Processed: 10/28/2022 2:22:45 PM CST,
Processing Method: PDA_01, MS_scan
Channel Name: PDA Ch1 214nm@4.8nm, MS TIC,
Column Name: A-RP-985

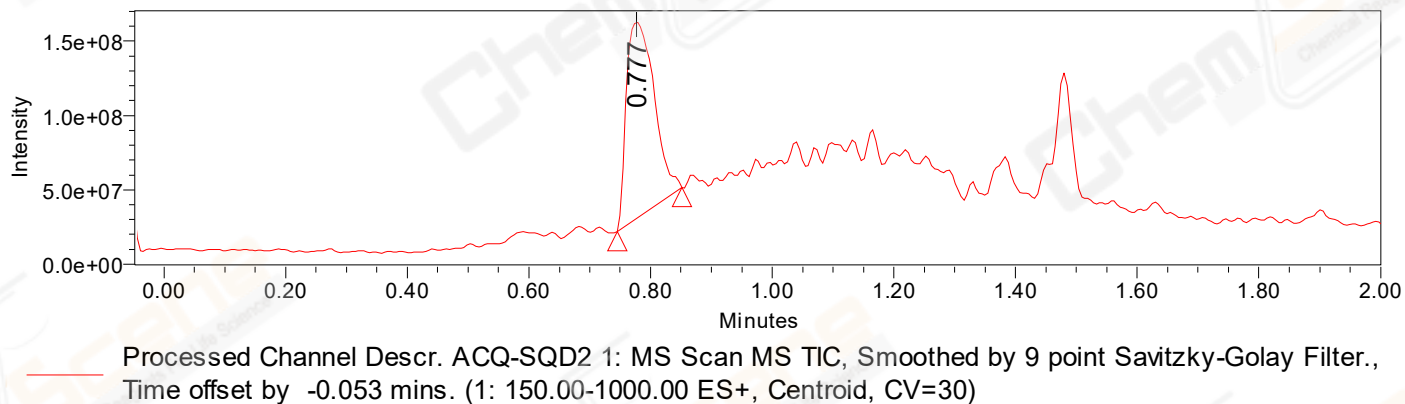
Auto-Scaled Chromatogram



Auto-Scaled Chromatogram



Auto-Scaled Chromatogram



Peak Results
Channel Name: PDA Ch2 254nm@4.8nm

	RT	Width (sec)	Area	Height	% Area	Base Peak (Combined) (m/z)	Channel Name
1	0.682	0.600	451	1082	0.06	151.82	PDA Ch2 254nm@4.8nm
2	0.692	1.050	1918	3209	0.25	151.96	PDA Ch2 254nm@4.8nm
3	0.721	1.150	1083	1901	0.14	151.76	PDA Ch2 254nm@4.8nm
4	0.777	4.250	755593	1121409	99.11	286.98	PDA Ch2 254nm@4.8nm
5	0.826	1.700	3325	3648	0.44	271.03	PDA Ch2 254nm@4.8nm

Peak Results
Channel Name: PDA Ch1 214nm@4.8nm

	RT	Width (sec)	Area	Height	% Area	Base Peak (Combined) (m/z)	Channel Name
1	0.594	1.600	4080	5365	0.35	151.92	PDA Ch1 214nm@4.8nm
2	0.681	0.700	1297	2664	0.11	151.89	PDA Ch1 214nm@4.8nm
3	0.692	1.000	1944	3207	0.17	150.80	PDA Ch1 214nm@4.8nm
4	0.721	0.900	1450	2884	0.12	151.76	PDA Ch1 214nm@4.8nm
5	0.777	4.150	1146160	1681698	98.66	286.98	PDA Ch1 214nm@4.8nm
6	0.823	2.050	6776	6419	0.58	271.02	PDA Ch1 214nm@4.8nm

Peak Results
Channel Name: MS TIC

	RT	Width (sec)	Area	Height	% Area	Base Peak (Combined) (m/z)	Channel Name
1	0.777	6.383	418851273	132984531	100.00	271.02	MS TIC

Match Plot

