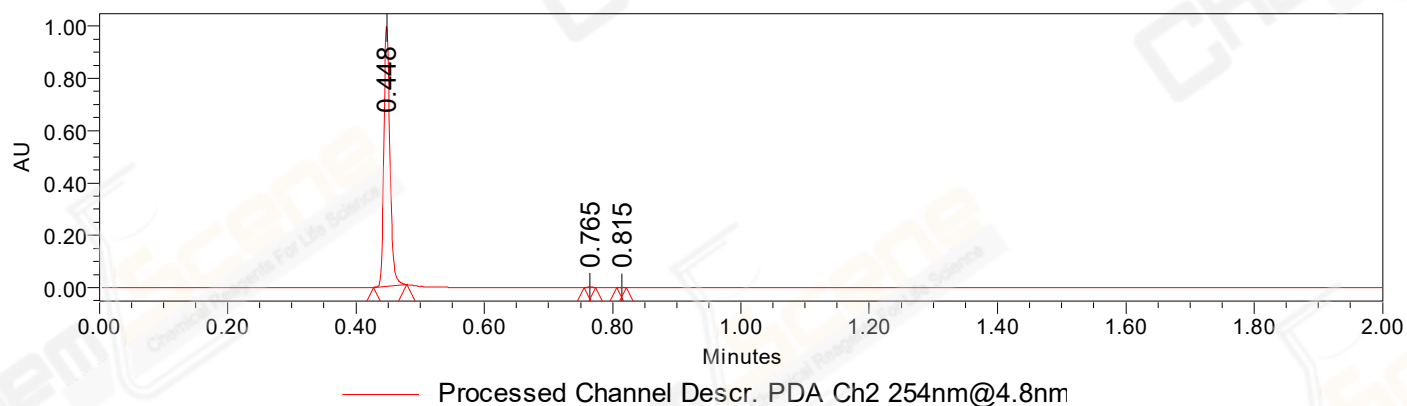


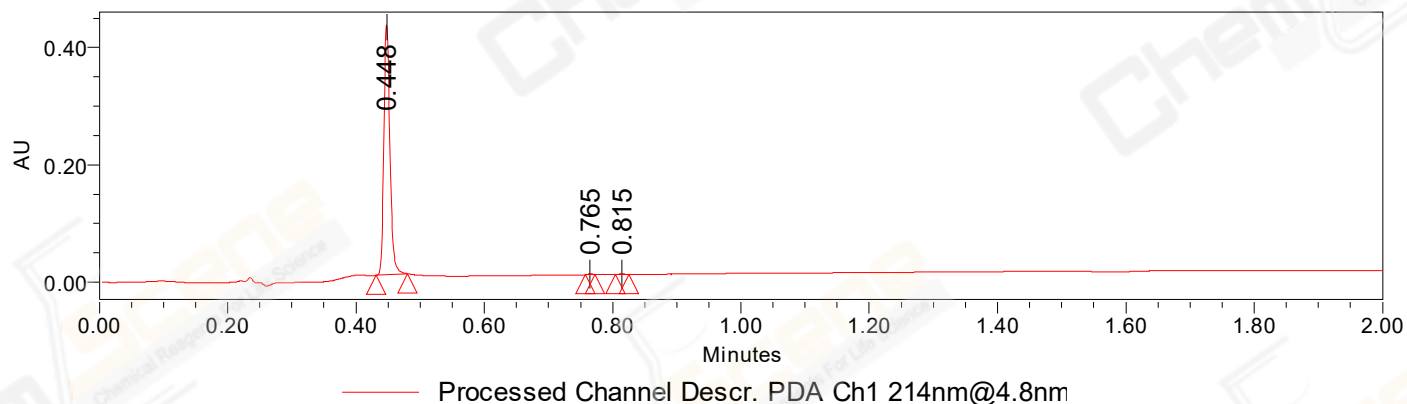
SAMPLE INFORMATION

CAS NO.:	67-47-0	Acquired By:	LY
Sample information:		Date Acquired:	11/4/2022 2:55:41 PM CST
Vial:	1:C,2	Acq. Method Set:	1_POS_2MIN_0_500
Injection #:	1	Date Processed:	11/4/2022 3:08:09 PM CST,
Injection Volume:	0.30 ul	Processing Method:	PDA_01, MS_scan
Run Time:	2.8 Minutes	Channel Name:	PDA Ch1 214nm@4.8nm, MS TIC,
Sample Set Name:	20221104	Column Name:	A-RP-985

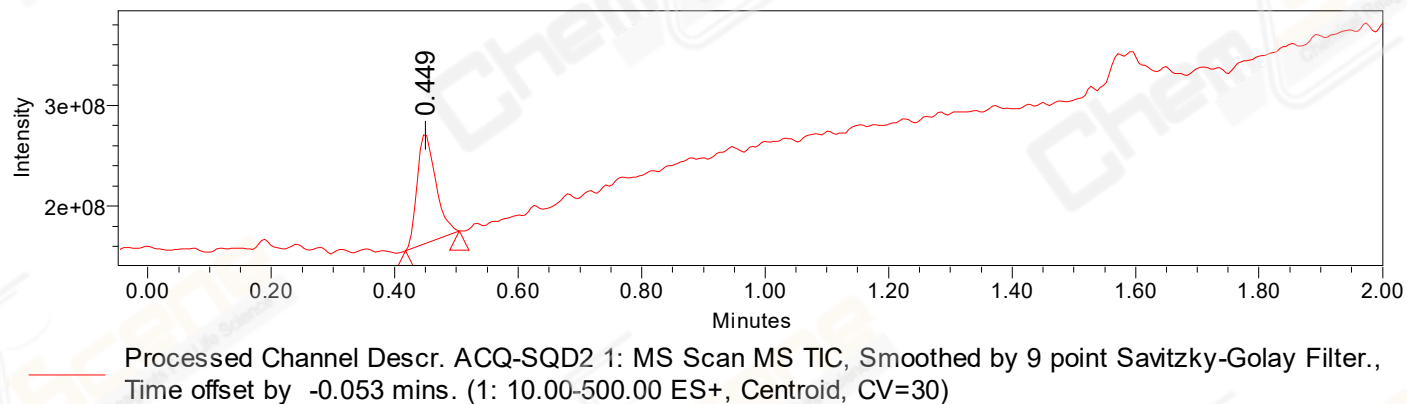
Auto-Scaled Chromatogram



Auto-Scaled Chromatogram



Auto-Scaled Chromatogram



Peak Results
Channel Name: PDA Ch2 254nm@4.8nm

	RT	Width (sec)	Area	Height	% Area	Base Peak (Combined) (m/z)	Channel Name
1	0.448	3.100	650507	993492	99.71	60.02	PDA Ch2 254nm@4.8nm
2	0.765	1.050	1650	3093	0.25	82.98	PDA Ch2 254nm@4.8nm
3	0.815	0.900	254	525	0.04	235.01	PDA Ch2 254nm@4.8nm

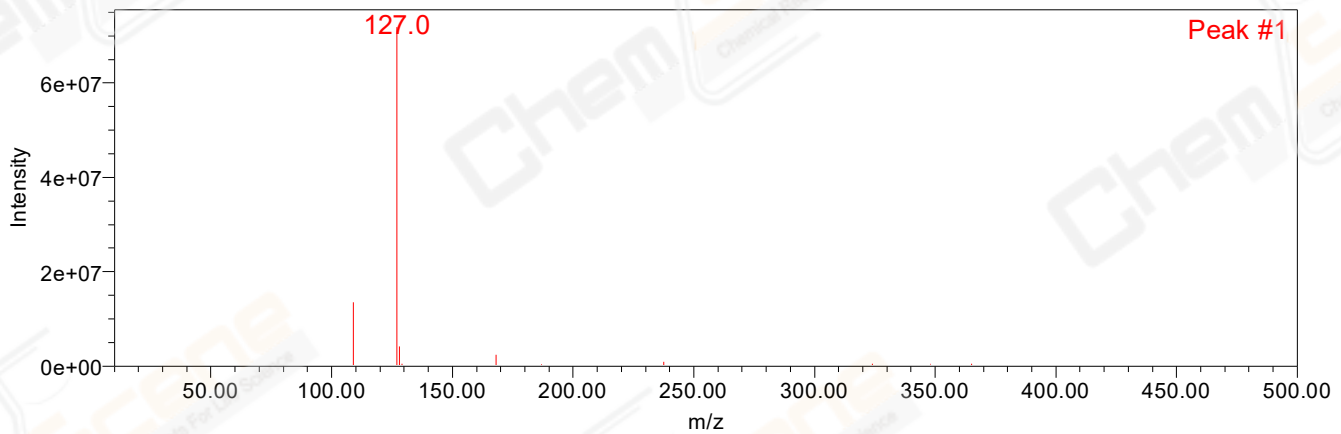
Peak Results
Channel Name: PDA Ch1 214nm@4.8nm

	RT	Width (sec)	Area	Height	% Area	Base Peak (Combined) (m/z)	Channel Name
1	0.448	2.900	278653	426259	99.66	60.02	PDA Ch1 214nm@4.8nm
2	0.765	0.900	586	1187	0.21	82.98	PDA Ch1 214nm@4.8nm
3	0.815	1.200	354	597	0.13	235.01	PDA Ch1 214nm@4.8nm

Peak Results
Channel Name: MS TIC

	RT	Width (sec)	Area	Height	% Area	Base Peak (Combined) (m/z)	Channel Name
1	0.449	5.238	228467438	109044353	100.00	126.96	MS TIC

Match Plot



Retention Time 0.449 Channel Name MS TIC