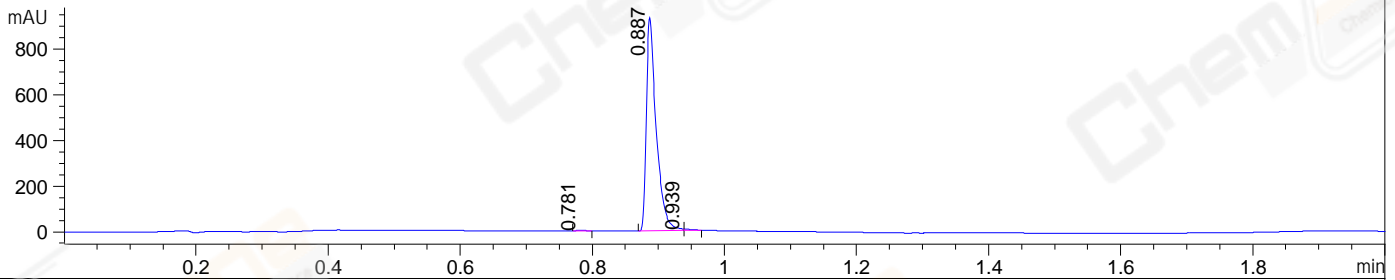
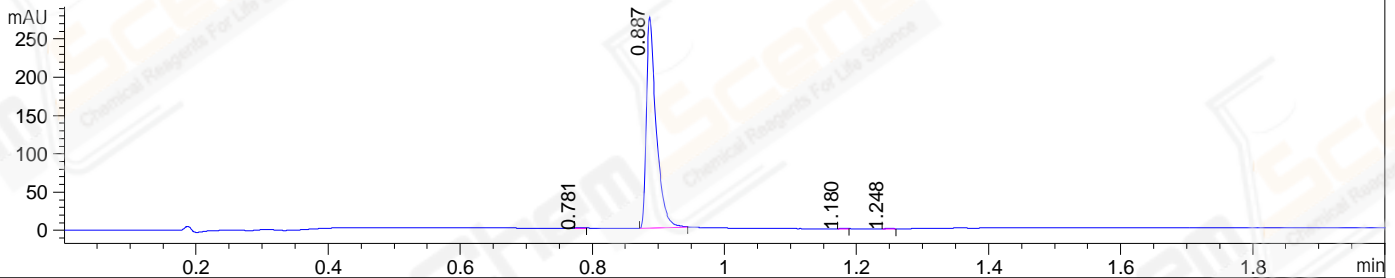


File ..11-07\BIZ2022-N06-WLQ20-UPLC-MS-05-013069.D Tgt Mass (EZ):  
 Injection Date : 07-Nov-22, 14:05:29 Seq. Line : 0  
 Sample Name : BIZ2022-N06-WLQ20 Location : P2-A-02  
 Acq. Operator : LY\_2287 Inj : 1  
 Spec. Reported : MS Integration Inj Volume : 0.5 ul  
 Acq. Method : D:\methods\1-POS-UPLC2.0MIN-(0.8)(150-1000).M  
 Analysis Method : D:\METHODS\1-POS-UPLC2.0MIN-(0.8)(150-1000).M  
 CAS NO. : 61153-77-3 WalkUp method: '1-POS-2MIN' Project: BIZ2022  
 Method Info : Mobile Phase: A: water(0.01%TFA) B:ACN(0.01%TFA)  
 Gradient: 5% to 95%B within 1.3 min  
 Flow Rate : 0.8ml/min  
 Column :Poroshell 120 EC- C18, 2.1\*50mm,1.9um A-RP-750  
 Oven Temperature : 45C

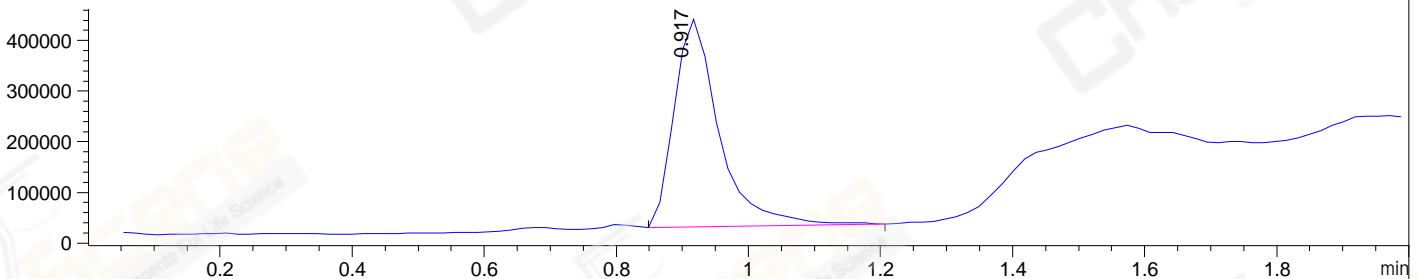
DAD1 A, Sig=214,4 Ref=off



DAD1 B, Sig=254,4 Ref=off



MSD1 TIC, MS File ES-API, Pos, Scan, Frag: 70



Integration Results for DAD1 A, Sig=214,4 Ref=off

RetTim	Width	Area	Height	Area%	MS (+)
0.78	0.02	2.98	3.09	0.30	270
0.89	0.02	973.71	936.14	99.30	323
0.94	0.01	3.88	5.82	0.40	667

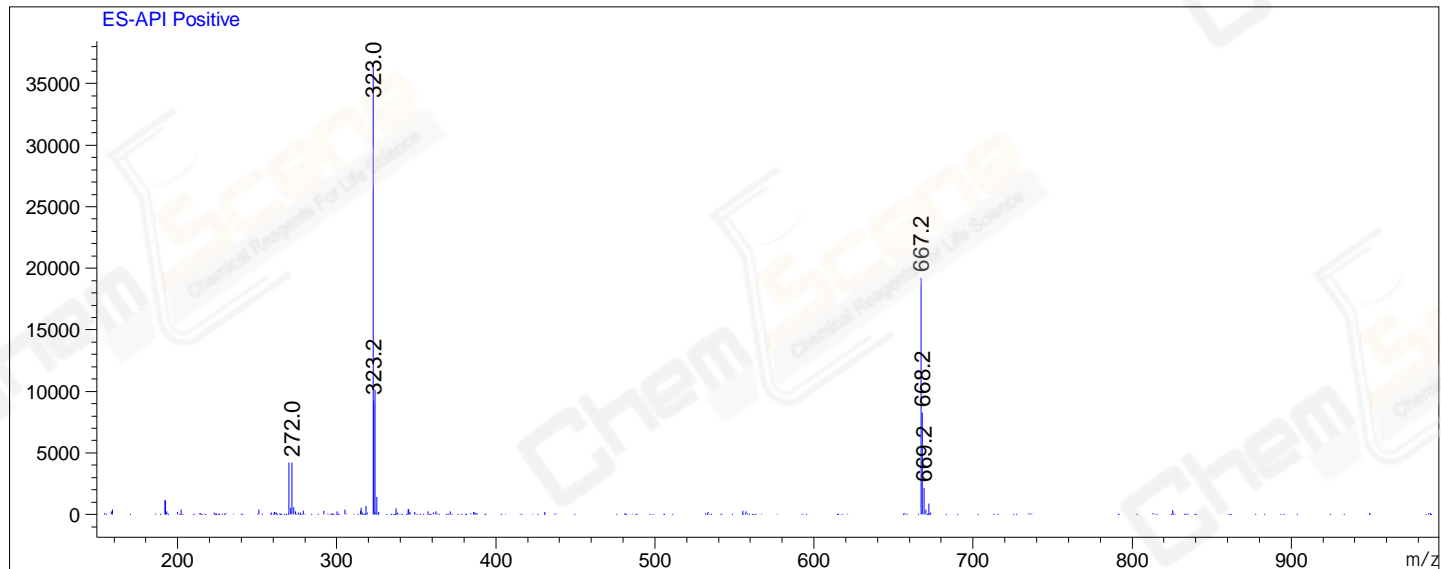
Integration Results for DAD1 B, Sig=254,4 Ref=off

RetTim	Width	Area	Height	Area%	MS (+)
0.78	0.01	0.90	1.09	0.31	270
0.89	0.02	285.89	276.40	99.26	323
1.18	0.01	0.54	0.72	0.19	323
1.25	0.01	0.70	0.79	0.24	323

Integration Results for MSD1 TIC, MS File

RetTim	Width	Area	Height	Area%	MS (+)
0.92	0.07	1940620.25	409471.09	100.00	323

Ret. Time: 0.92 <<<< POSITIVE SPECTRA >>>>



\*\*\* End of Report \*\*\*