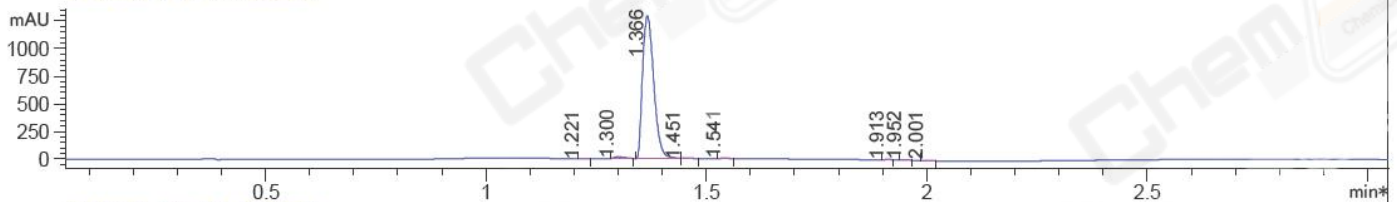
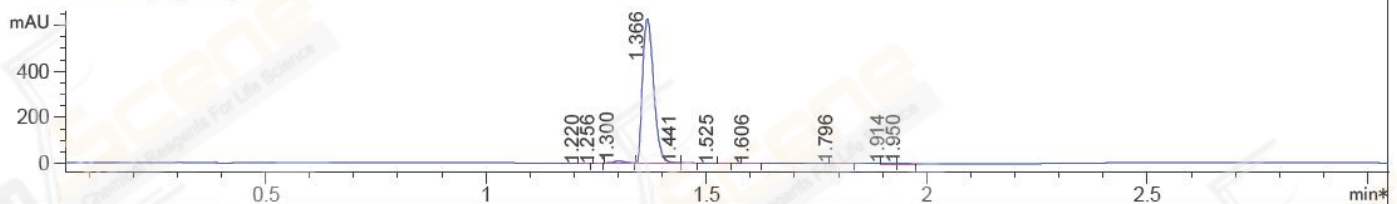


File ..HEM32\1\DATA\20170315\BIZ\BIZ2017-315-WJ4.D Tgt Mass (EZX): 427.20
 Injection Date : 15 Mar 17 3:18 pm +0800 Seq. Line : 0
 Sample Name : BIZ2017-315-WJ4 Location : P2-C-07
 Acq. Operator : GZZ_718 Inj : 1
 Spec. Reported : MS Integration Inj Volume : 1 ul
 Acq. Method : D:\Chem32\1\METHODS\1-POS-3MIN.M
 Analysis Method : D:\Chem32\1\METHODS\1-STANDBY.M
 Catalog No : CS-6286 Batch#23886 Easy-Access Method: '1-POS-3MIN' 427.20
 Method Info : Column: A-RP-169

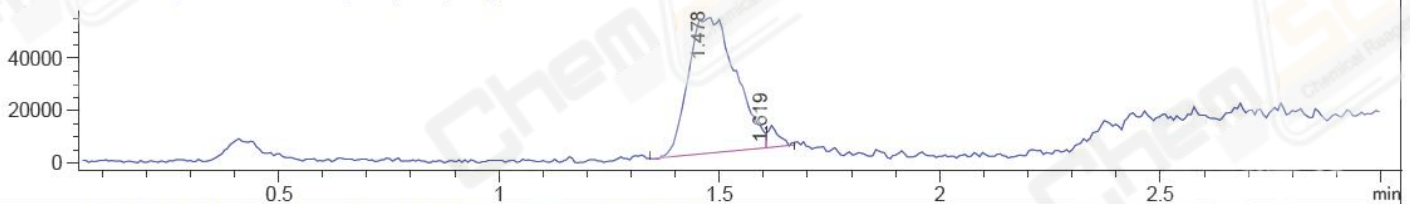
*DAD1 B, Sig=214,4 Ref=off



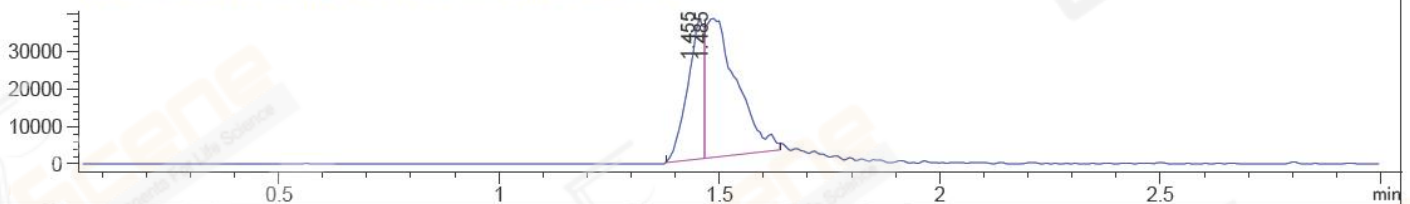
*DAD1 C, Sig=254,4 Ref=off



MSD1 TIC, MS File ES-API, Pos, Scan, Frag: 70



Ion 428.2, MSD1 428.2, Target Mass 427.2 +H Positive, EIC=427.9:428.9



Integration Results for DAD1 B, Sig=214,4 Ref=off

RetTim	Width	Area	Height	Area%	MS (+)
1.22	0.02	0.80	0.85	0.03	ND
1.30	0.03	21.94	13.54	0.94	ND
1.37	0.03	2282.87	1295.58	98.12	428
1.45	0.03	6.08	4.05	0.26	428
1.54	0.02	6.58	6.74	0.28	428
1.91	0.02	3.04	3.50	0.13	ND
1.95	0.02	2.68	2.68	0.11	ND
2.00	0.03	2.52	2.06	0.11	ND

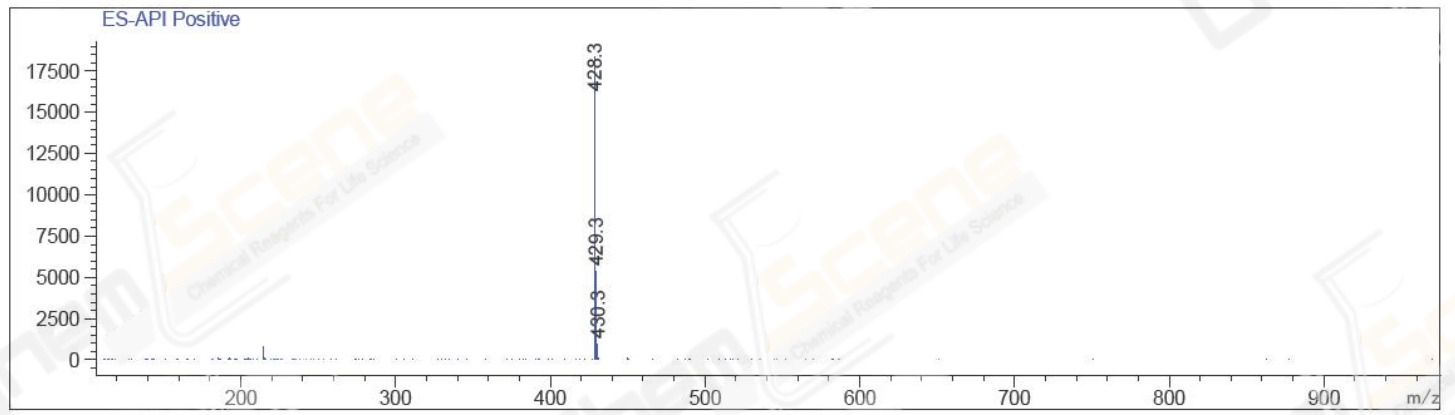
Integration Results for DAD1 C, Sig=254,4 Ref=off

RetTim	Width	Area	Height	Area%	MS (+)
1.22	0.04	0.54	0.54	0.05	ND
1.26	0.19	0.15	0.20	0.01	ND
1.30	0.04	18.62	9.39	1.65	ND
1.37	0.03	1100.69	629.71	97.31	428
1.44	0.03	2.74	1.50	0.24	428
1.53	0.04	0.43	0.09	0.04	428

1.61	0.07	0.65	0.34	0.06	428
1.80	0.04	1.28	0.65	0.11	ND
1.91	0.03	2.90	2.44	0.26	ND
1.95	0.03	3.11	2.42	0.27	ND

Ret. Time: 1.48

<<<< POSITIVE SPECTRA >>>>



Ret. Time: 1.62

