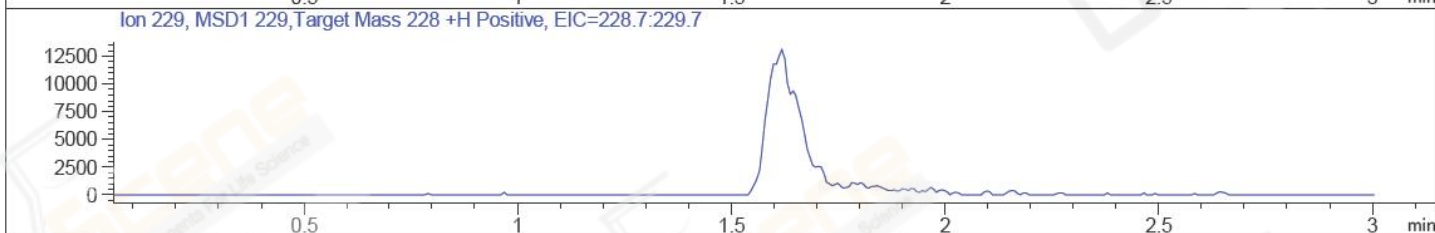
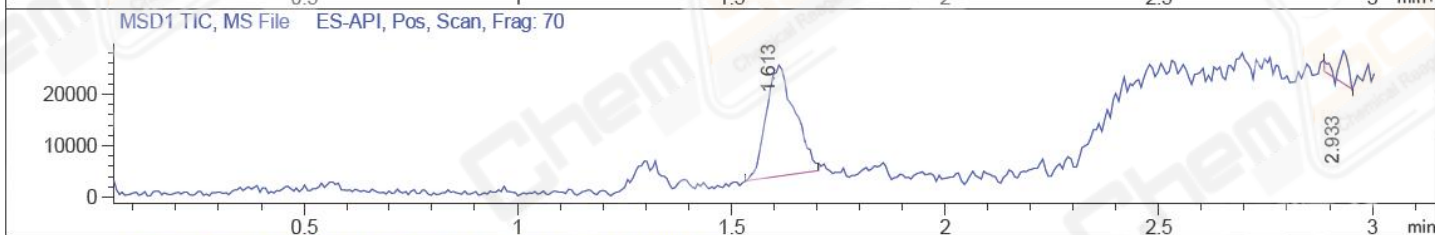
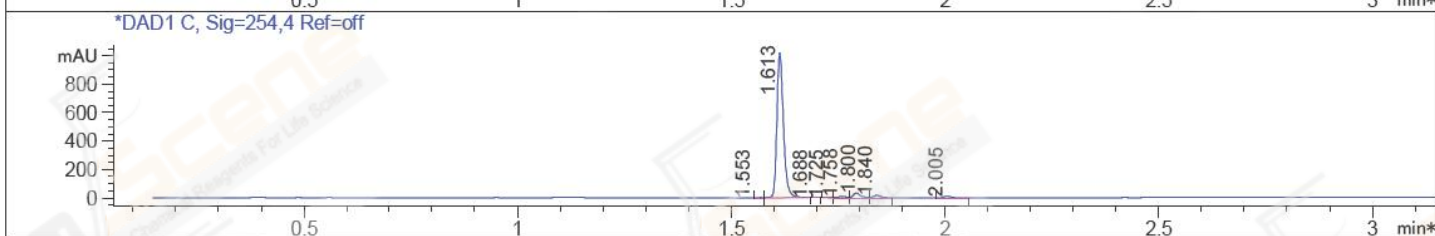
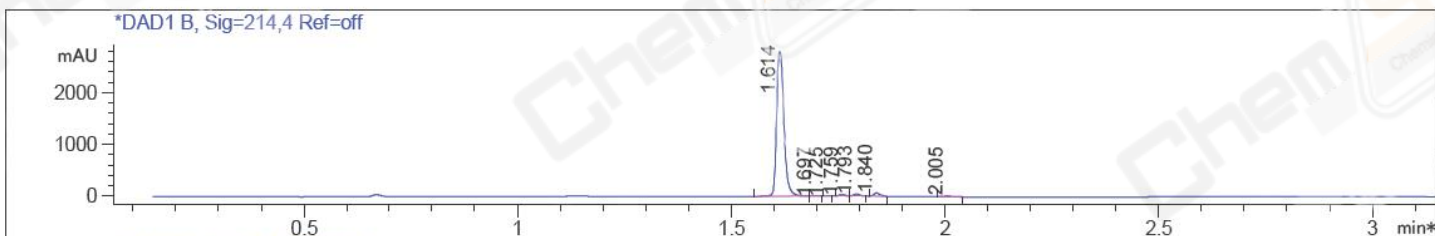


File ..EM32\1\DATA\20170321\BIZ\BIZ2017-321-WJ10.D Tgt Mass (EZX): 228.00
Injection Date : 21 Mar 17 2:33 pm +0800 Seq. Line : 0
Sample Name : BIZ2017-321-WJ10 Location : P1-B-04
Acq. Operator : GZZ_718 Inj : 1
Spec. Reported : MS Integration Inj Volume : 1 ul
Acq. Method : D:\Chem32\1\METHODS\1-POS-3MIN.M
Analysis Method : D:\CHEM32\1\METHODS\1-POS-3MIN-PROSRSS.M
Catalog No : CS-6305 Batch#23949 Easy-Access Method: '1-POS-3MIN' 228.00
Method Info : Mobile Phase: A: water(0.01%TFA) B:ACN(0.01%TFA)
Gradient: 5% to 95%B within 1.3 min
Flow Rate :1.8ml/min
Column :SunFire C18, 4.6*50mm,3.5um A-RP-186
Oven Temperature : 45C



Integration Results for DAD1 B, Sig=214,4 Ref=off

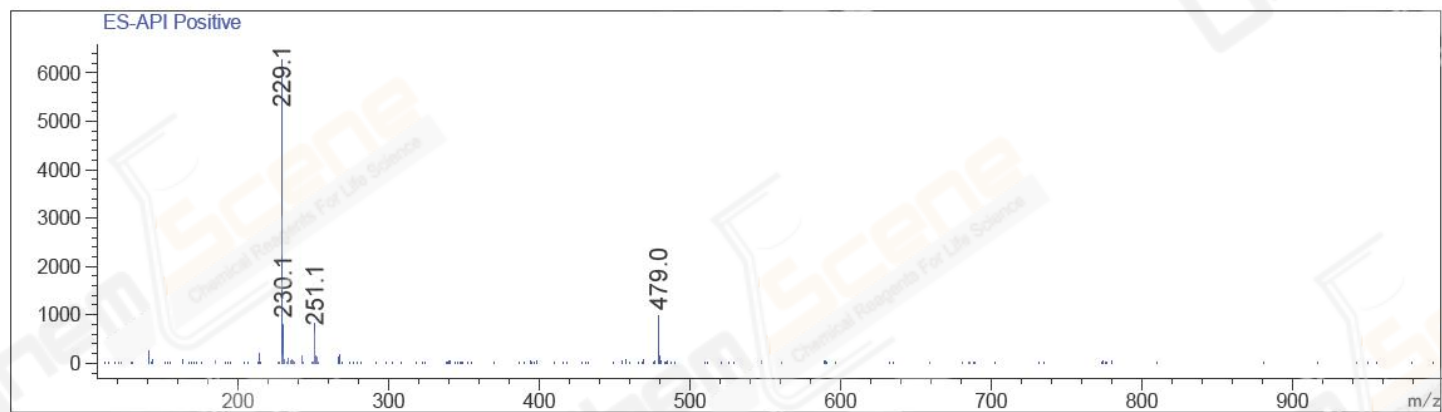
RetTim	Width	Area	Height	Area%	MS (+)
1.61	0.02	3332.79	2819.35	95.57	229
1.70	0.02	3.27	3.04	0.09	229
1.72	0.01	0.51	0.63	0.01	229
1.76	0.02	28.82	31.83	0.83	ND
1.79	0.02	40.67	41.91	1.17	ND
1.84	0.02	61.47	61.25	1.76	ND
2.00	0.02	19.63	16.67	0.56	141

Integration Results for DAD1 C, Sig=254,4 Ref=off

RetTim	Width	Area	Height	Area%	MS (+)
1.55	0.02	0.83	0.01	0.07	229
1.61	0.02	1087.34	1033.30	92.82	229
1.69	0.01	0.51	0.05	0.04	229
1.73	0.02	0.74	0.63	0.06	229
1.76	0.02	9.39	8.85	0.80	ND
1.80	0.02	37.75	33.61	3.22	ND
1.84	0.02	19.80	18.26	1.69	ND

2.00 0.02 15.12 12.27 1.29 ND

Ret. Time: 1.61 <<<< POSITIVE SPECTRA >>>>



Ret. Time: 2.93

