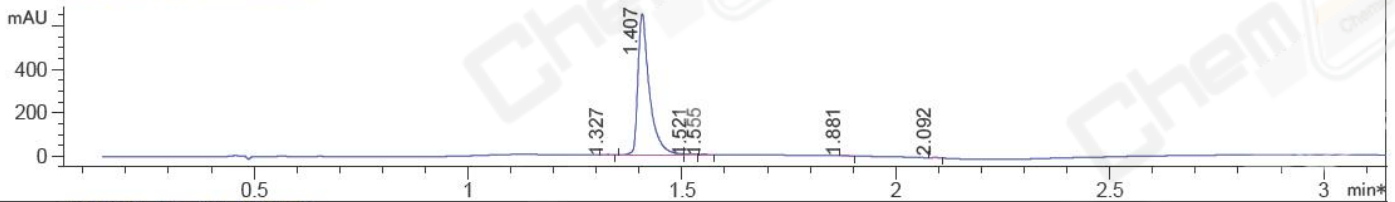
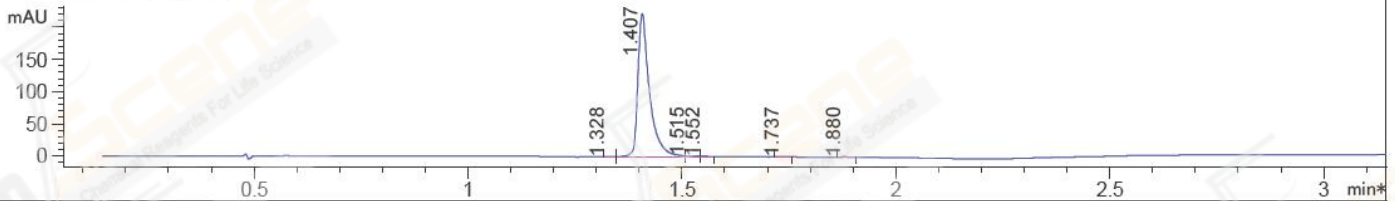


File ..HEM32\1\DATA\20170317\BIZ\BIZ2017-317-WJ7.D Tgt Mass (EZX): 492.10  
 Injection Date : 17 Mar 17 3:10 pm +0800 Seq. Line : 0  
 Sample Name : BIZ2017-317-WJ7 Location : P2-B-05  
 Acq. Operator : GZZ\_718 Inj : 1  
 Spec. Reported : MS Integration Inj Volume : 1 ul  
 Acq. Method : D:\Chem32\1\METHODS\1-POS-3MIN.M  
 Analysis Method : D:\Chem32\1\METHODS\1-STANDBY.M  
 Catalog No : CS-5608 Batch#24006 Easy-Access Method: '1-POS-3MIN' 492.10  
 Method Info : Column: A-RP-169

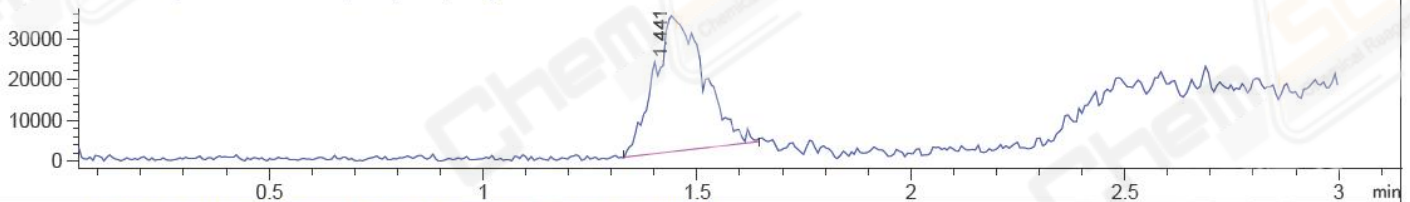
\*DAD1 B, Sig=214,4 Ref=off



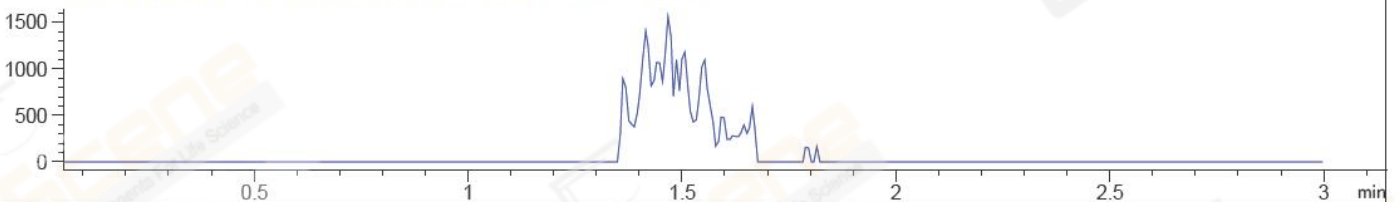
\*DAD1 C, Sig=254,4 Ref=off



MSD1 TIC, MS File ES-API, Pos, Scan, Frag: 70



Ion 493.1, MSD1 493.1, Target Mass 492.1 +H Positive, EIC=492.8:493.8



Integration Results for DAD1 B, Sig=214,4 Ref=off

RetTim	Width	Area	Height	Area%	MS (+)
1.33	0.01	1.99	2.26	0.16	ND
1.41	0.03	1214.25	653.34	99.18	247
1.52	0.02	3.33	2.32	0.27	247
1.55	0.02	1.25	1.26	0.10	247
1.88	0.02	1.57	1.39	0.13	ND
2.09	0.02	1.87	1.83	0.15	ND

Integration Results for DAD1 C, Sig=254,4 Ref=off

RetTim	Width	Area	Height	Area%	MS (+)
1.33	0.03	0.24	0.29	0.06	ND
1.41	0.03	418.79	221.76	98.93	247
1.52	0.03	2.14	1.28	0.50	247
1.55	0.02	0.80	0.73	0.19	247
1.74	0.02	0.54	0.47	0.13	ND
1.88	0.03	0.81	0.67	0.19	ND

Ret. Time: 1.44

&lt;&lt;&lt;&lt; POSITIVE SPECTRA &gt;&gt;&gt;&gt;

