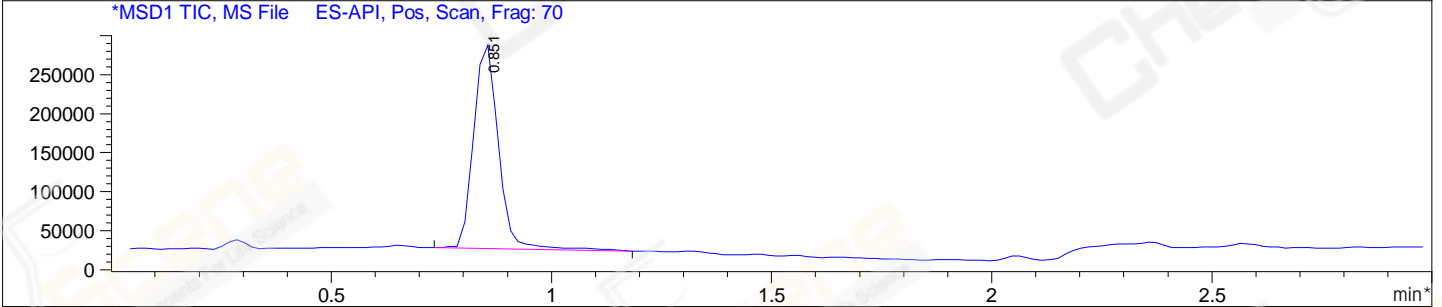
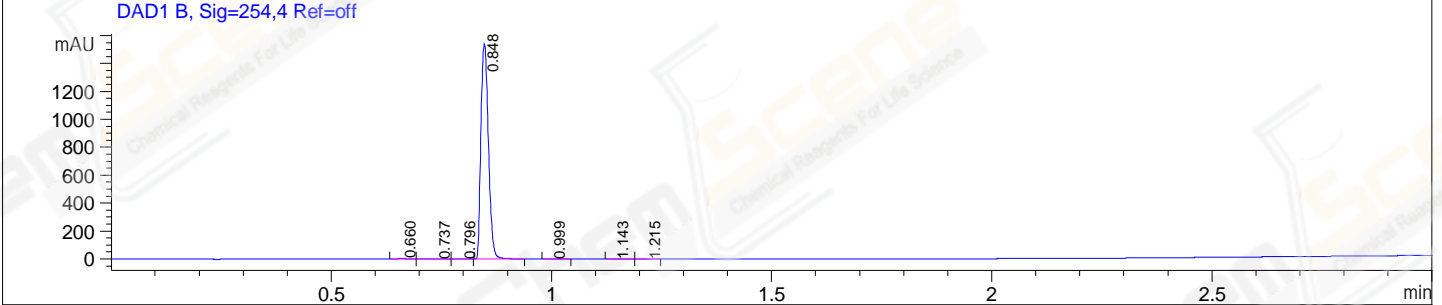
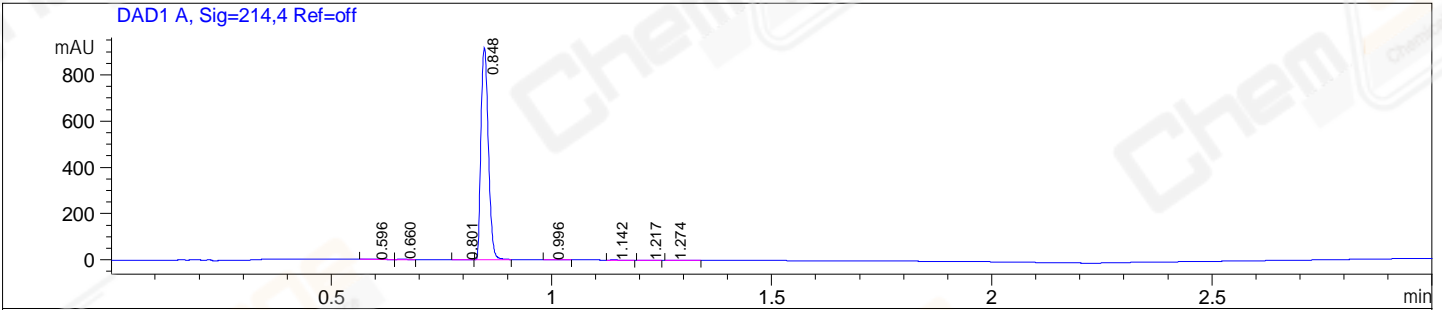


File E:\ChemStation\1\DATA\2024\2024-09\2024-09-04\CPK2024-904-240149-UPLC-MS-10-043959.D
 Injection Date : 04-Sep-24, 17:29:38 Tgt Mass(EZX) :
 Sample Name : CPK2024-904-240149 Location : P1-D-01
 Acq. Operator : LY_2278 Inj : 1
 Spec. Reported : MS Integration Inj Volume : 0.8 ul
 Acq. Method : E:\ChemStation\1\Methods\1-POS-UPLC3.0MIN(1.2)(150-1000).M
 Analysis Method : E:\CHEMSTATION\1\METHODS\1-POS-UPLC3.0MIN(1.2)(150-1000).M
 CAS NO. : 417716-92-8
 Method Info : Mobile Phase: A: water(0.01%TFA) B:ACN(0.01%TFA)
 Gradient: 5% to 95%B within 2.0 min
 Flow Rate :1.2ml/min
 Column :Shim-pack Scepter C18-120, 3.0*33mm,3um
 Oven Temperature : 45C



Integration Results for DAD1 A, Sig=214,4 Ref=off

RetTim	Width	Area	Height	Area%
0.60	0.04	1.66	0.72	0.15
0.66	0.02	2.31	2.37	0.21
0.80	0.02	0.74	0.51	0.07
0.85	0.02	1070.32	917.07	99.31
1.00	0.03	0.70	0.39	0.06
1.14	0.02	0.57	0.47	0.05
1.22	0.02	0.81	0.50	0.08
1.27	0.02	0.68	0.53	0.06

Integration Results for DAD1 B, Sig=254,4 Ref=off

RetTim	Width	Area	Height	Area%
0.66	0.02	4.13	4.07	0.23
0.74	0.04	2.40	0.88	0.13
0.80	0.03	1.80	1.16	0.10
0.85	0.02	1819.22	1535.30	99.36
1.00	0.03	1.07	0.60	0.06
1.14	0.02	1.01	0.92	0.06

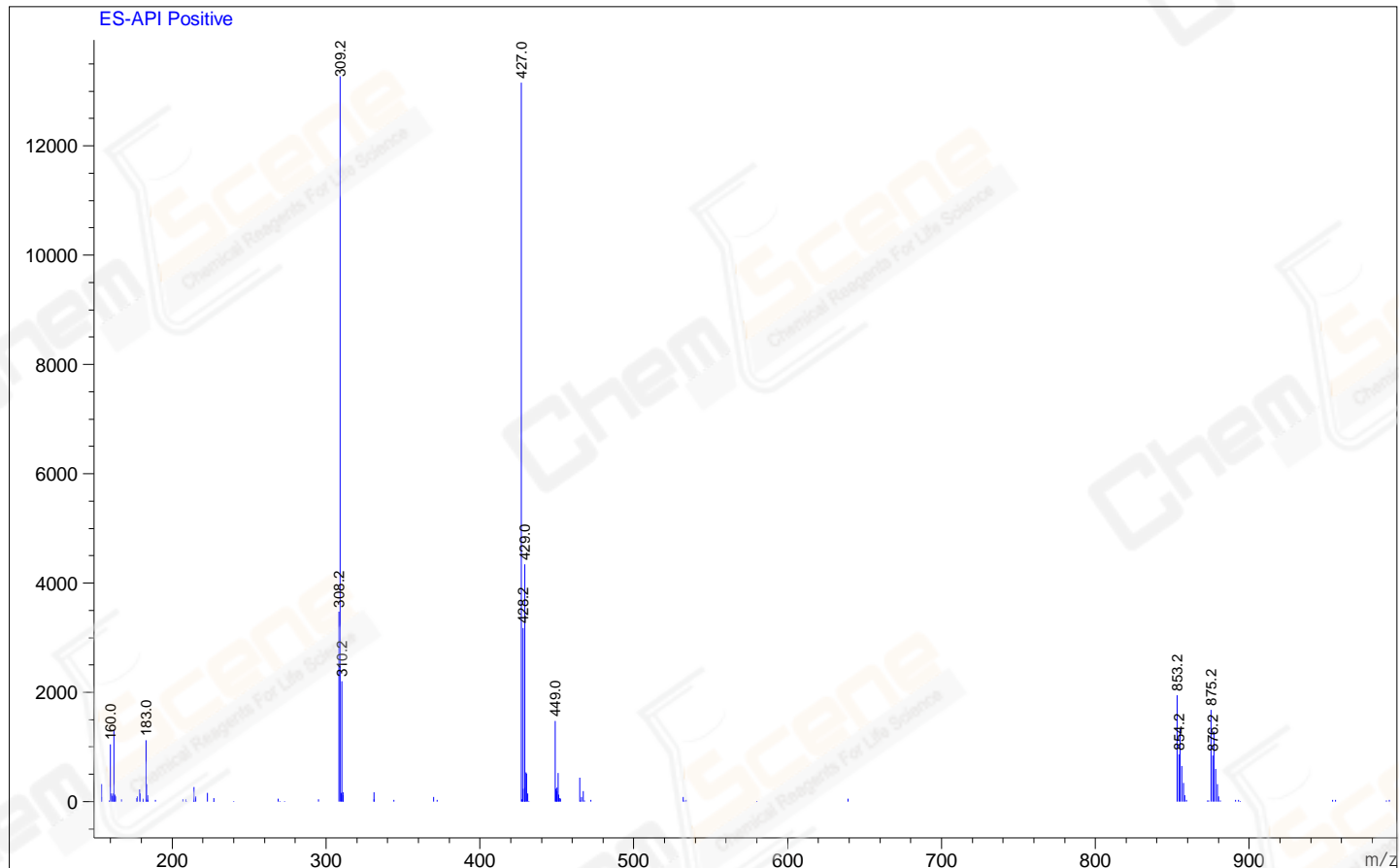
1.22 0.02 1.30 0.94 0.07

Integration Results for MSD1 TIC, MS File

RetTime	Width	Area	Height	Area%
0.85	0.06	1026703.94	263349.16	100.00

Ret. Time: 0.85

<<<< POSITIVE SPECTRA >>>>



*** End of Report ***