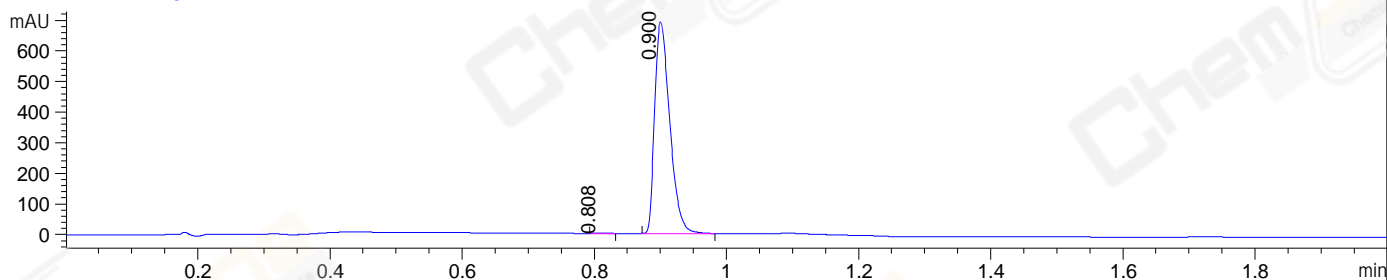
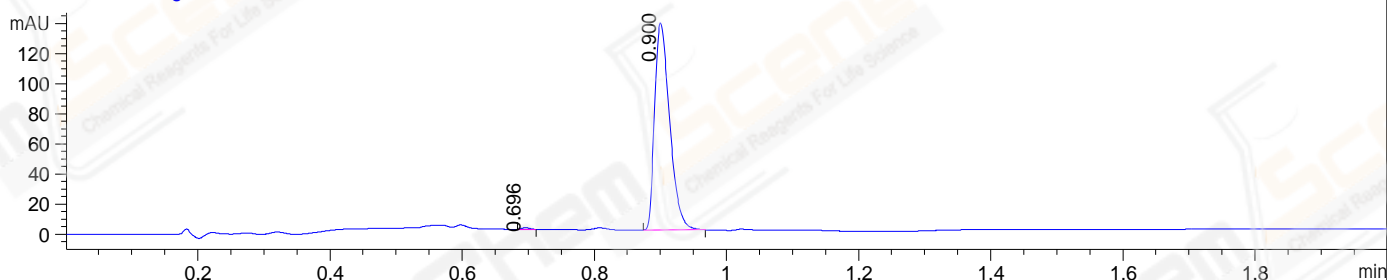


File ..22-09-23\HP14199-001-10-UPLC-MS-05-009162.D Tgt Mass (EZ):  
 Injection Date : 23-Sep-22, 15:54:16 Seq. Line : 0  
 Sample Name : HP14199-001-10 Location : P2-C-10  
 Acq. Operator : LY\_2287 Inj : 1  
 Spec. Reported : MS Integration Inj Volume : 0.2 ul  
 Acq. Method : D:\methods\1-POS-UPLC2.0MIN-(0.8)(150-1000).M  
 Analysis Method : D:\METHODS\1-POS-UPLC2.0MIN-(0.8)(150-1000).M  
 CAS NO. : 1217457-86-7 WalkUp method: '1-POS-2MIN' Project: LD1460  
 Method Info : Mobile Phase: A: water(0.01%TFA) B:ACN(0.01%TFA)  
 Gradient: 5% to 95%B within 1.3 min  
 Flow Rate : 0.8ml/min  
 Column :Poroshell 120 EC- C18, 2.1\*50mm,1.9um A-RP-750  
 Oven Temperature : 45C

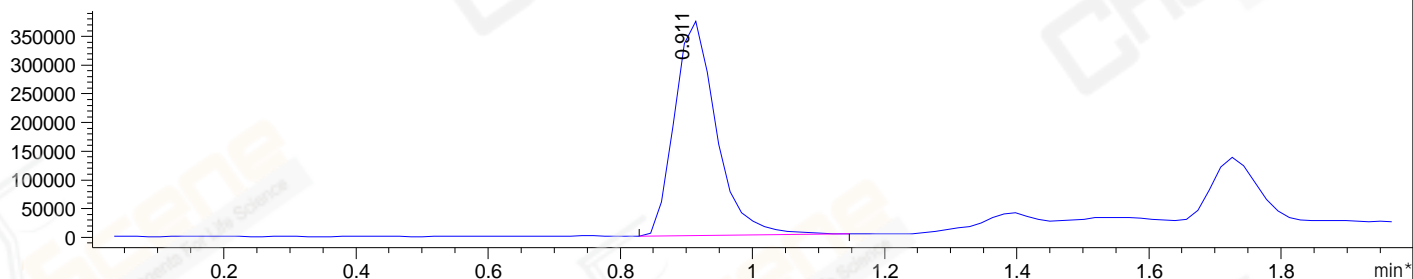
DAD1 A, Sig=214,4 Ref=off



DAD1 B, Sig=254,4 Ref=off



\*MSD1 TIC, MS File ES-API, Pos, Scan, Frag: 70



Integration Results for DAD1 A, Sig=214,4 Ref=off

RetTim	Width	Area	Height	Area%	MS(+)
0.81	0.02	3.07	2.21	0.28	ND
0.90	0.03	1097.89	692.60	99.72	*** 48

Integration Results for DAD1 B, Sig=254,4 Ref=off

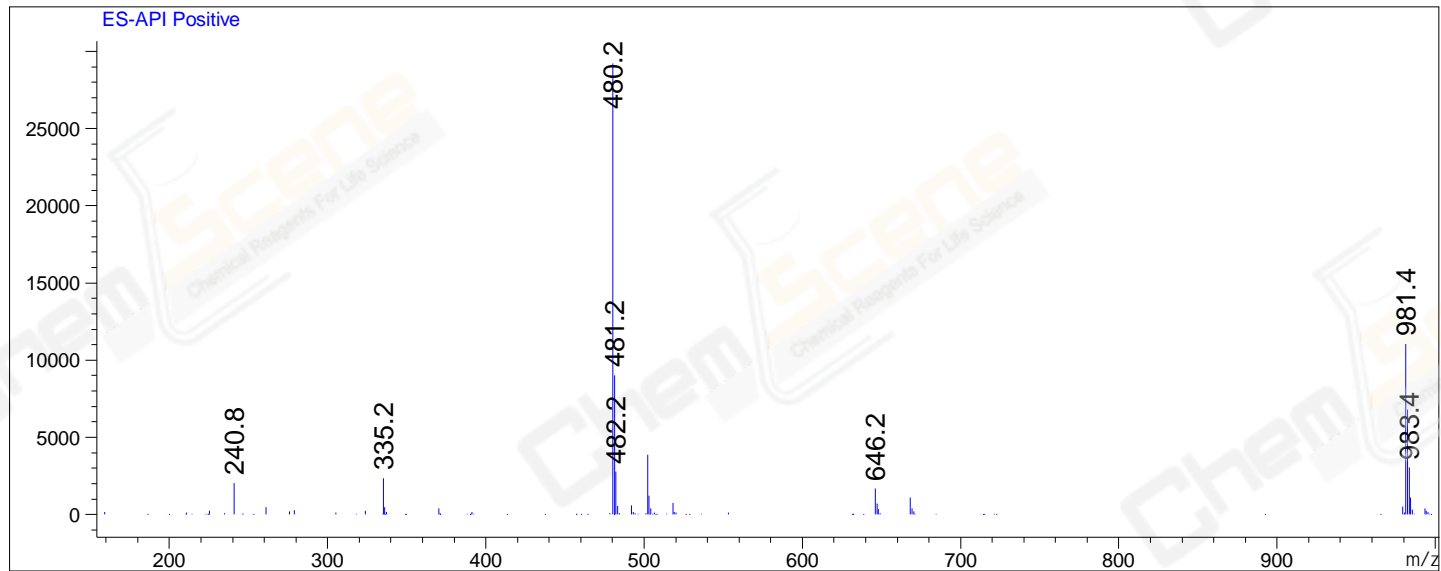
RetTim	Width	Area	Height	Area%	MS(+)
0.70	0.02	1.22	1.25	0.56	ND
0.90	0.03	216.94	137.53	99.44	*** 48

Integration Results for MSD1 TIC, MS File

RetTim	Width	Area	Height	Area%	MS(+)
0.91	0.07	1639416.00	375350.13	100.00	480

Ret. Time: 0.91

<<<< POSITIVE SPECTRA >>>>



\*\*\* End of Report \*\*\*