

File ..70410 2017-04-10 08-59-25\DC16024-181-W2A.D Tgt Mass (CHM):

Injection Date : 10 Apr 17 10:09 am +0800

Seq. Line : 15

Sample Name : DC16024-181-W2A

Location : 11

Acq. Operator : SYSTEM

Inj : 1

Spec. Reported : MS Integration

Inj Volume : 3 ul

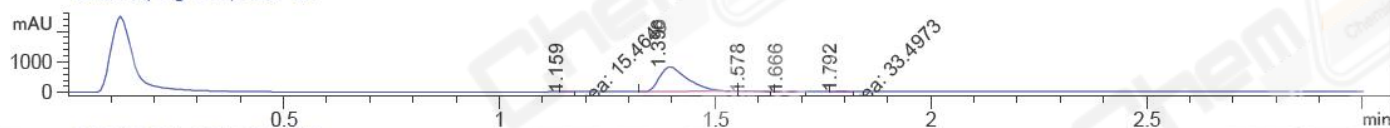
Acq. Method : D:\Chem32\1\Data\20170410\20170410 2017-04-10 08-59-25\3.5MIN-0.02%FA+- .M

Analysis Method : D:\Chem32\1\Data\20170410\20170410 2017-04-10 08-59-25\3.5MIN-0.02%FA+- .M

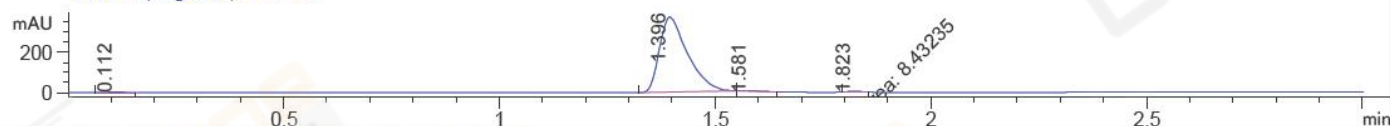
Catalog No : CS-3168 Batch#24227

Method Info :

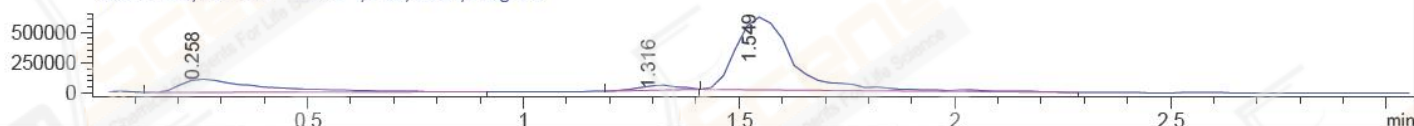
DAD1 A, Sig=214,4 Ref=off



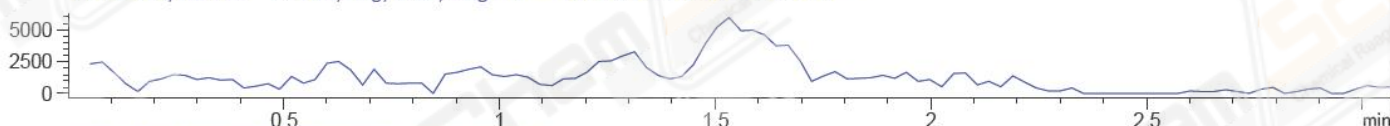
DAD1 B, Sig=254,4 Ref=off



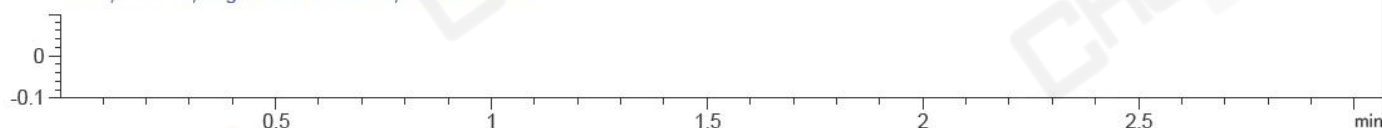
MSD1 TIC, MS File ES-API, Pos, Scan, Frag: 70



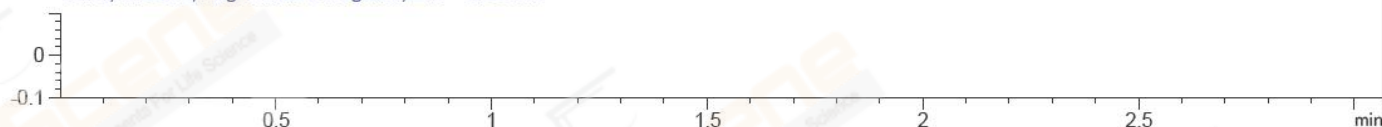
MSD2 TIC, MS File ES-API, Neg, Scan, Frag: 70 **** NO MS PEAKS INTEGRATED ****



Ion 0, MSD1 0, Target Mass 0 Positive, EIC=-0.30:0.70



Ion 0, MSD2 0, Target Mass 0 Negative, EIC=-0.30:0.70



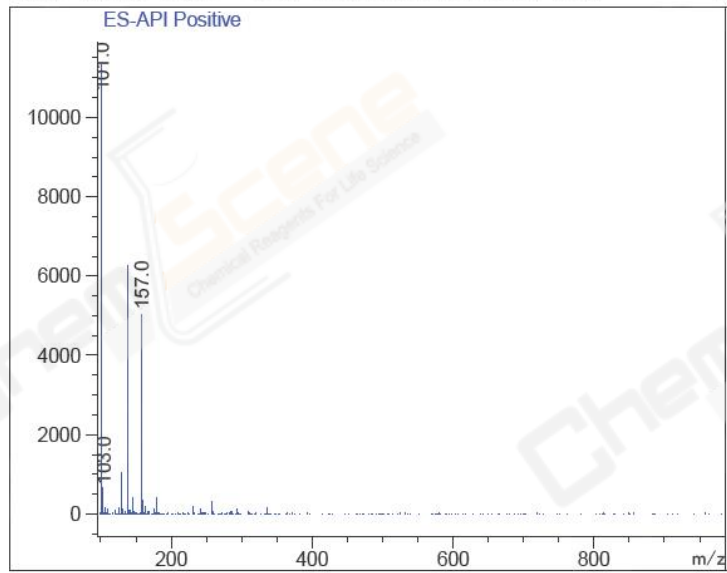
Integration Results for DAD1 A, Sig=214,4 Ref=off

| RetTim | Width | Area | Height | Area% | MS (+) | MS (-) |
|--------|-------|---------|--------|-------|--------|--------|
| 1.16 | 0.03 | 15.46 | 9.81 | 0.41 | 340 | 363 |
| 1.40 | 0.07 | 3688.88 | 816.15 | 98.14 | 284 | 564 |
| 1.58 | 0.04 | 13.68 | 5.33 | 0.36 | 284 | 566 |
| 1.67 | 0.04 | 7.40 | 3.21 | 0.20 | 284 | 147 |
| 1.79 | 0.04 | 33.50 | 13.56 | 0.89 | 284 | 550 |

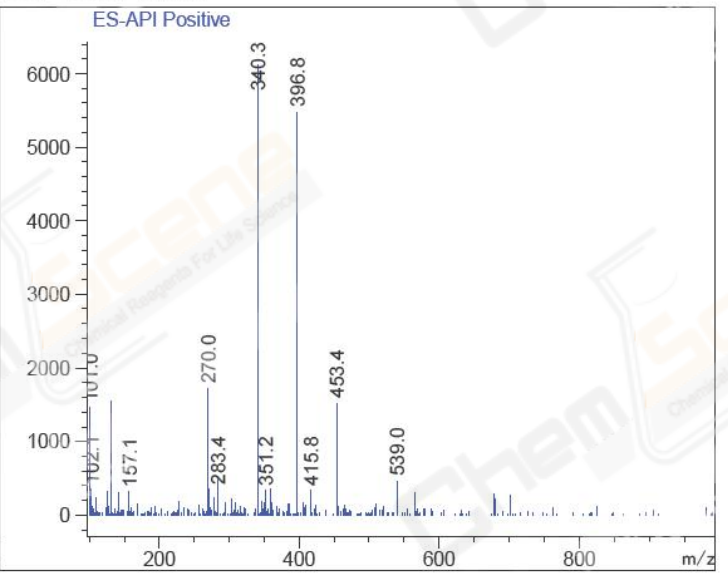
Integration Results for DAD1 B, Sig=254,4 Ref=off

| RetTim | Width | Area | Height | Area% | MS (+) | MS (-) |
|--------|-------|---------|--------|-------|--------|--------|
| 0.11 | 0.04 | 10.34 | 4.18 | 0.61 | 101 | 623 |
| 1.40 | 0.07 | 1678.93 | 371.72 | 98.39 | 284 | 564 |
| 1.58 | 0.04 | 8.65 | 3.09 | 0.51 | 284 | 566 |
| 1.82 | 0.04 | 8.43 | 3.80 | 0.49 | 284 | 550 |

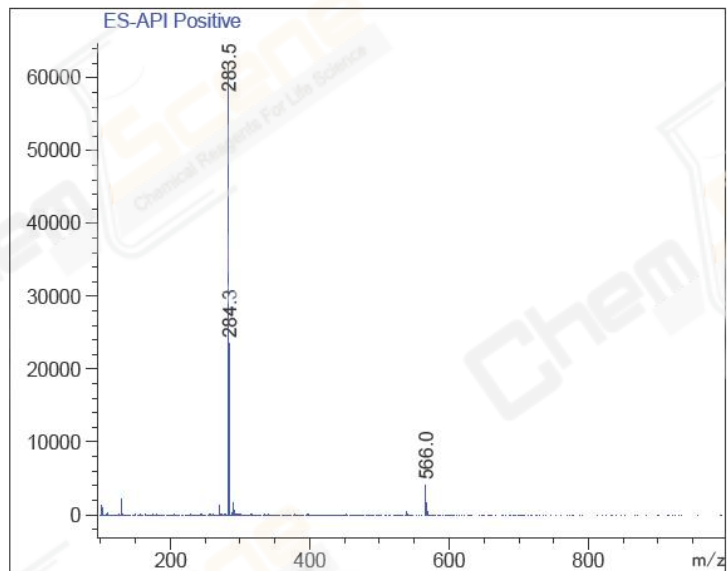
Ret. Time: 0.26 <<<< POSITIVE SPECTRA >>>>



Ret. Time: 1.32



Ret. Time: 1.55



*** End of Report ***