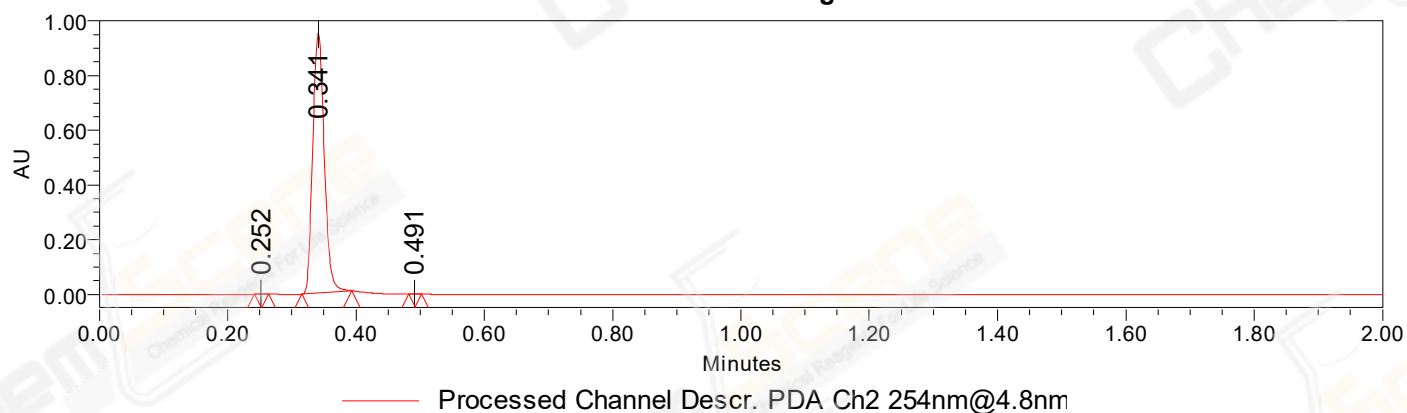


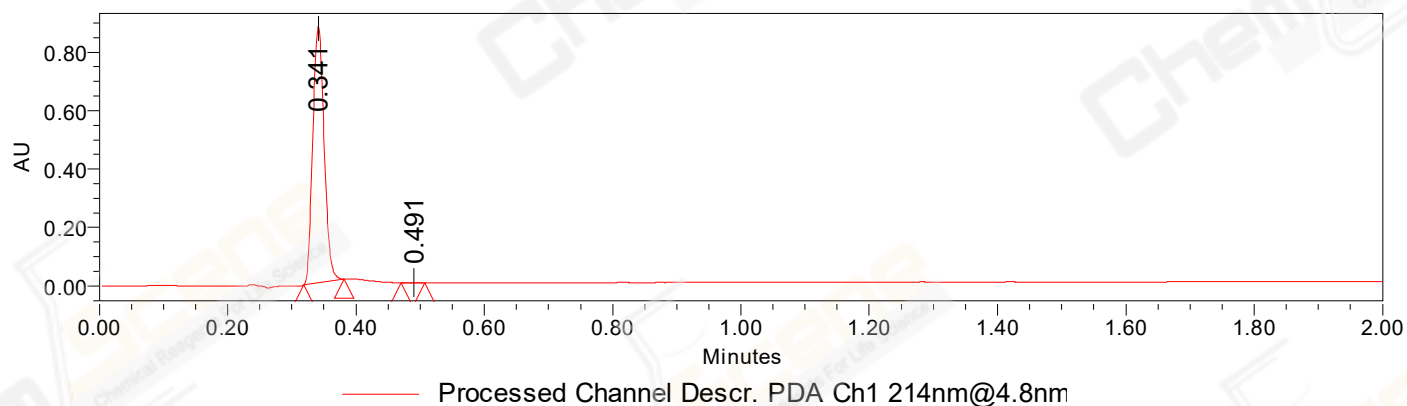
SAMPLE INFORMATION

CAS NO.:	932-53-6	Acquired By:	LY
Sample information:		Date Acquired:	12/5/2022 2:32:49 PM CST
Vial:	1:F,2	Acq. Method Set:	1_POS_2MIN_0_500
Injection #:	1	Date Processed:	12/5/2022 2:39:21 PM CST,
Injection Volume:	0.30 ul	Processing Method:	PDA_01, MS_scan
Run Time:	2.8 Minutes	Channel Name:	PDA Ch1 214nm@4.8nm, MS TIC,
Sample Set Name:	20221205	Column Name:	A-RP-985

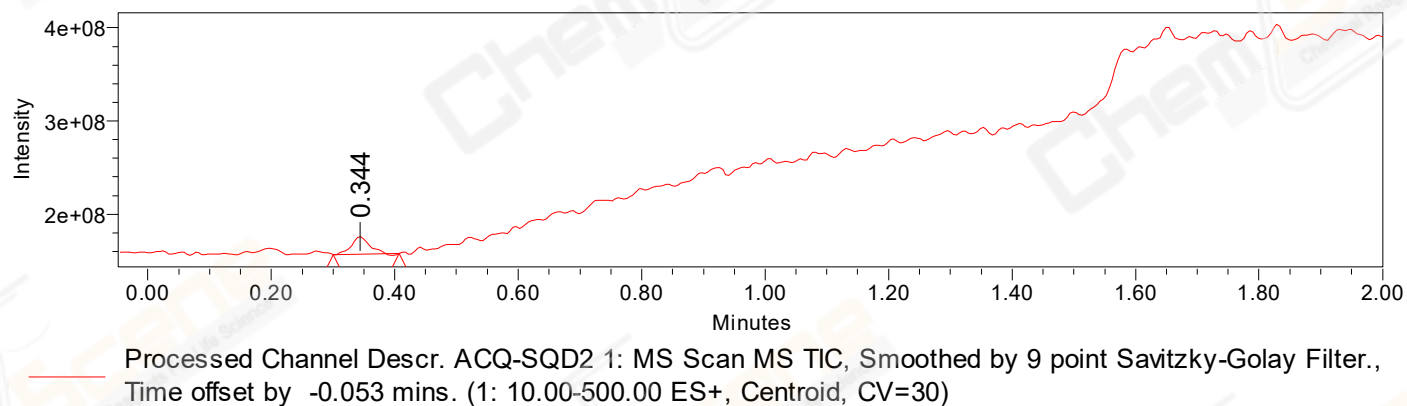
Auto-Scaled Chromatogram



Auto-Scaled Chromatogram



Auto-Scaled Chromatogram



Peak Results
Channel Name: PDA Ch2 254nm@4.8nm

	RT	Width (sec)	Area	Height	% Area	Base Peak (Combined) (m/z)	Channel Name
1	0.252	1.350	412	748	0.03	122.45	PDA Ch2 254nm@4.8nm
2	0.341	4.650	1184315	949540	99.94	42.97	PDA Ch2 254nm@4.8nm
3	0.491	1.150	338	627	0.03	41.88	PDA Ch2 254nm@4.8nm

Peak Results
Channel Name: PDA Ch1 214nm@4.8nm

	RT	Width (sec)	Area	Height	% Area	Base Peak (Combined) (m/z)	Channel Name
1	0.341	3.800	1078945	877879	99.97	41.88	PDA Ch1 214nm@4.8nm
2	0.491	2.250	310	470	0.03	42.97	PDA Ch1 214nm@4.8nm

Peak Results
Channel Name: MS TIC

	RT	Width (sec)	Area	Height	% Area	Base Peak (Combined) (m/z)	Channel Name
1	0.344	6.402	41096581	18952237	100.00	127.93	MS TIC

Match Plot

