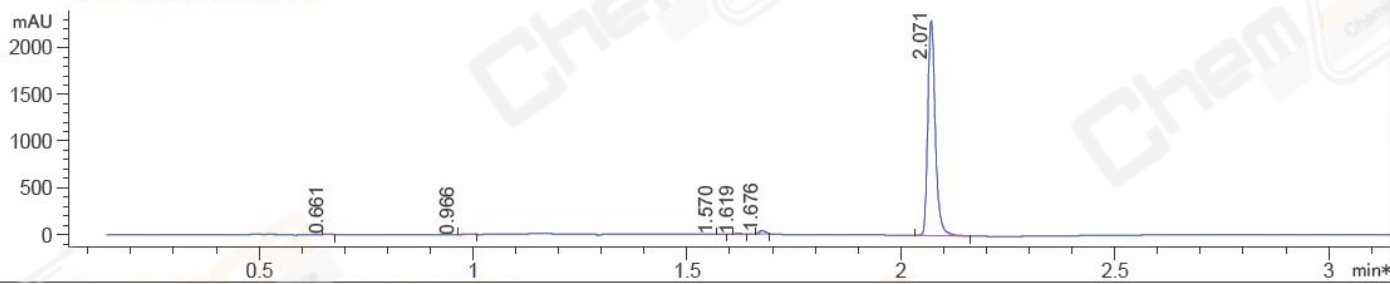
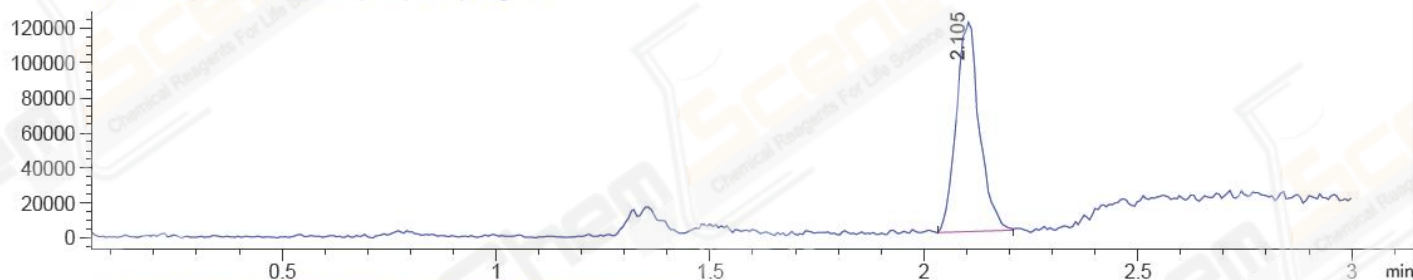


File ..HEM32\1\DATA\20170414\BIZ\BIZ2017-414-WJ2.D Tgt Mass (EZX): 270.00
 Injection Date : 14 Apr 17 11:14 am +0800 Seq. Line : 0
 Sample Name : BIZ2017-414-WJ2 Location : P1-E-04
 Acq. Operator : GZZ_718 Inj : 1
 Spec. Reported : MS Integration Inj Volume : 2 ul
 Acq. Method : D:\Chem32\1\METHODS\1-POS-3MIN.M
 Analysis Method : D:\CHEM32\1\METHODS\1-POS-3MIN-PROSRSS.M
 Catalog No : CS-6403 Batch#24264 Easy-Access Method: '1-POS-3MIN' 270.00
 Method Info : Mobile Phase: A: water(0.01%TFA) B:ACN(0.01%TFA)
 Gradient: 5% to 95%B within 1.3 min
 Flow Rate :1.8ml/min
 Column :SunFire C18, 4.6*50mm,3.5um A-RP-186
 Oven Temperature : 45C

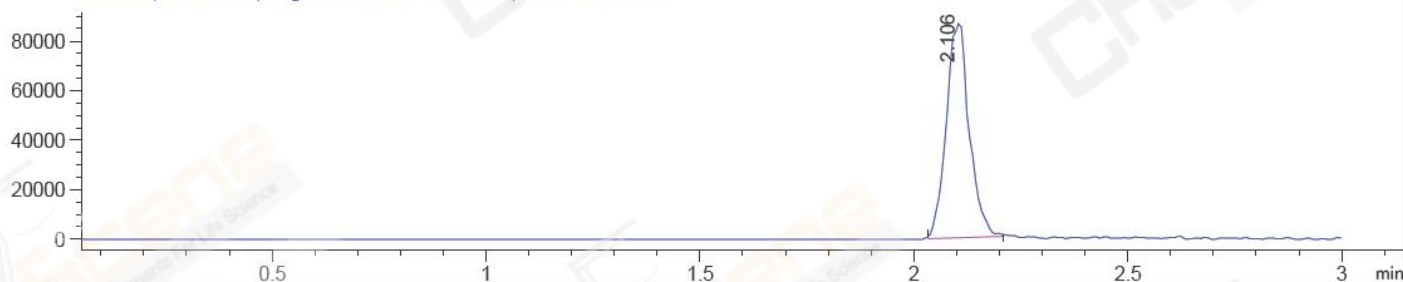
*DAD1 B, Sig=214,4 Ref=off



MSD1 TIC, MS File ES-API, Pos, Scan, Frag: 70



Ion 271, MSD1 271, Target Mass 270 +H Positive, EIC=270.7:271.7



Integration Results for DAD1 B, Sig=214,4 Ref=off

RetTim	Width	Area	Height	Area%	MS (+)
0.66	0.02	5.06	5.34	0.18	ND
0.97	0.02	4.90	-0.38	0.17	ND
1.57	0.01	1.80	0.41	0.06	ND
1.62	0.02	6.78	6.73	0.24	ND
1.68	0.02	37.86	37.68	1.33	ND
2.07	0.02	2799.42	2313.01	98.03	271

Ret. Time: 2.10

<<<< POSITIVE SPECTRA >>>>

