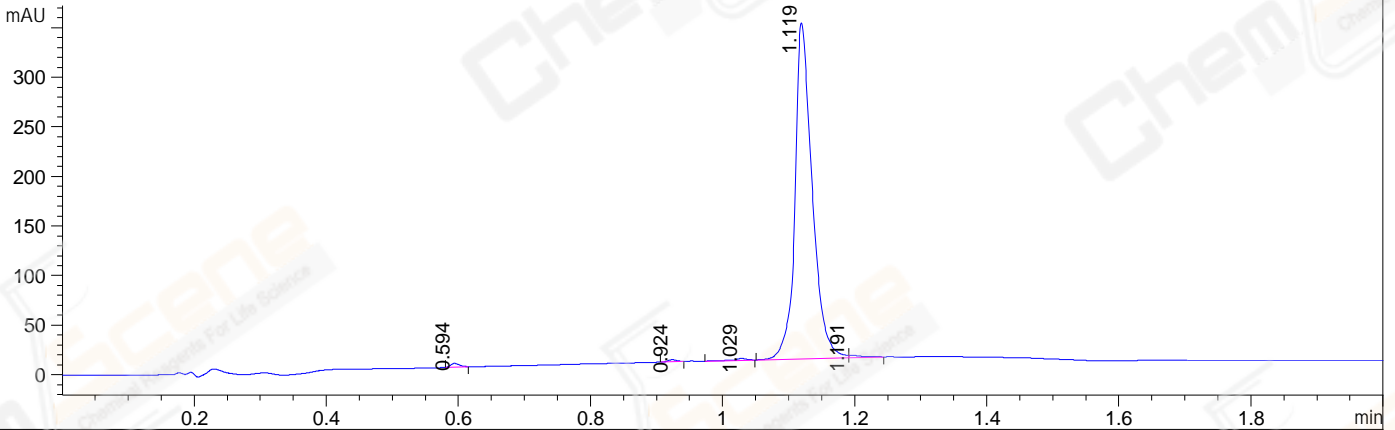
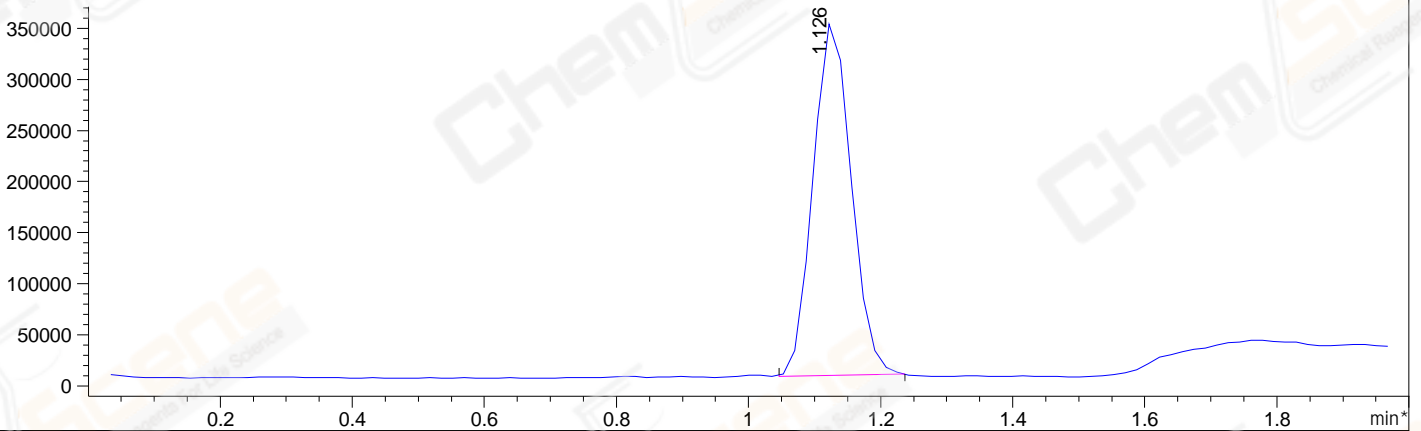


File ..2-12-05\HP14199-002-3_3-UPLC-MS-03-045770.D Tgt Mass (EZX):
 Injection Date : 05-Dec-22, 14:07:01 Seq. Line : 0
 Sample Name : HP14199-002-3_3 Location : P1-D-10
 Acq. Operator : LiYong Inj : 1
 Spec. Reported : MS Integration Inj Volume : 0.2 ul
 Acq. Method : E:\Chem32\1\Methods\1-POS-UPLC2.0MIN(0.8)(150-1000).M
 Analysis Method : E:\CHEM32\1\METHODS\1-POS-UPLC2.0MIN(0.8)-(0-2000).M
 CAS NO. : 1217457-86-7 WalkUp method: '1-POS-2MIN' Project: LD1460
 Method Info : Mobile Phase: A: water(0.01%TFA) B:ACN(0.01%TFA)
 Gradient: 5% to 95%B within 1.3 min
 Flow Rate : 0.8ml/min
 Column :Poroshell 120 EC- C18, 2.1*50mm,1.9um
 Oven Temperature : 45C

DAD1 A, Sig=214,4 Ref=off



*MSD1 TIC, MS File ES-API, Pos, Scan, Frag: 70



Integration Results for DAD1 A, Sig=214,4 Ref=off

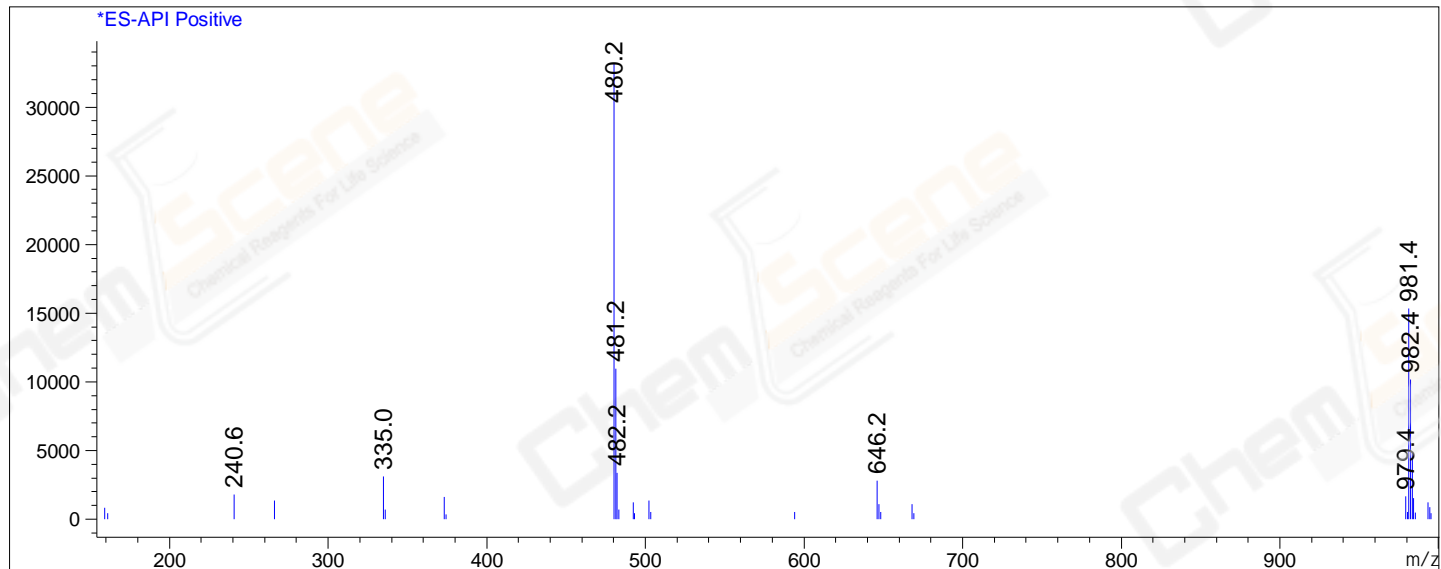
RetTim	Width	Area	Height	Area%	MS (+)
0.59	0.02	3.67	3.89	0.59	159
0.92	0.01	1.77	2.06	0.28	373
1.03	0.02	2.12	1.78	0.34	373
1.12	0.03	615.51	338.87	98.29	480
1.19	0.02	3.13	2.38	0.50	480

Integration Results for MSD1 TIC, MS File

RetTim	Width	Area	Height	Area%	MS (+)
1.13	0.07	1379025.00	352312.94	100.00	480

Ret. Time: 1.13

<<<< POSITIVE SPECTRA >>>>



*** End of Report ***