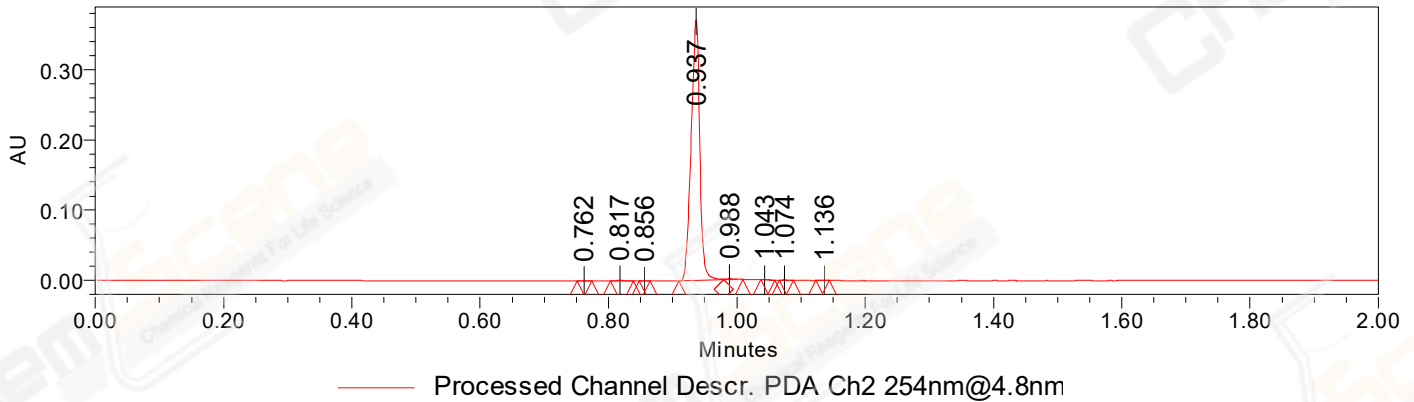


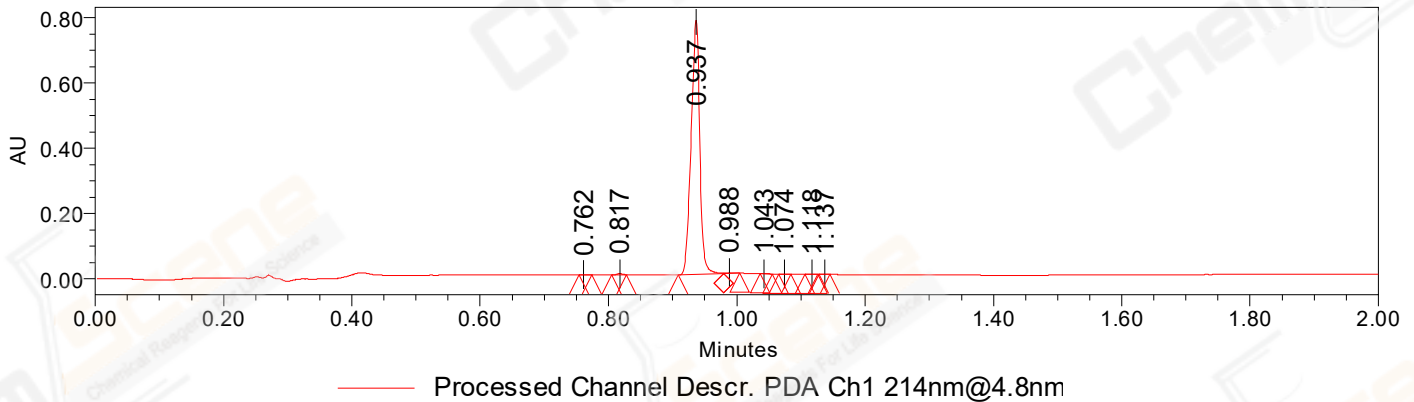
SAMPLE INFORMATION

CAS NO.:	298708-81-3	Acquired By:	LY
Sample information:		Date Acquired:	10/21/2022 11:05:35 AM CST
Vial:	1:B,6	Acq. Method Set:	1_POS_2MIN
Injection #:	1	Date Processed:	10/21/2022 1:19:41 PM CST,
Injection Volume:	0.30 ul	Processing Method:	PDA_01, MS_scan
Run Time:	2.8 Minutes	Channel Name:	PDA Ch1 214nm@4.8nm, MS TIC,
Sample Set Name:	20221021	Column Name:	A-RP-985

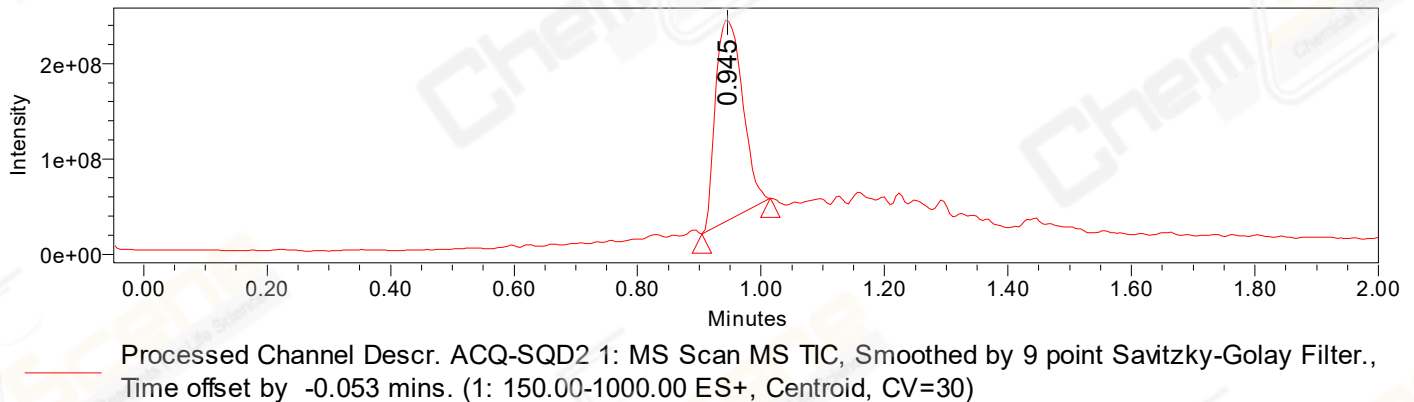
Auto-Scaled Chromatogram



Auto-Scaled Chromatogram



Auto-Scaled Chromatogram



Peak Results
Channel Name: PDA Ch2 254nm@4.8nm

	RT	Width (sec)	Area	Height	% Area	Base Peak (Combined) (m/z)	Channel Name
1	0.762	1.400	316	492	0.09	151.97	PDA Ch2 254nm@4.8nm
2	0.817	2.150	1130	1521	0.32	152.02	PDA Ch2 254nm@4.8nm
3	0.856	1.000	108	177	0.03	170.92	PDA Ch2 254nm@4.8nm
4	0.937	4.150	347631	371564	98.86	152.03	PDA Ch2 254nm@4.8nm
5	0.988	1.850	1783	1696	0.51	398.06	PDA Ch2 254nm@4.8nm
6	1.043	1.300	172	273	0.05	152.01	PDA Ch2 254nm@4.8nm
7	1.074	1.350	332	536	0.09	153.06	PDA Ch2 254nm@4.8nm
8	1.136	1.250	160	294	0.05	152.02	PDA Ch2 254nm@4.8nm

Peak Results
Channel Name: PDA Ch1 214nm@4.8nm

	RT	Width (sec)	Area	Height	% Area	Base Peak (Combined) (m/z)	Channel Name
1	0.762	1.200	728	1170	0.10	151.98	PDA Ch1 214nm@4.8nm
2	0.817	1.400	2497	3940	0.34	152.06	PDA Ch1 214nm@4.8nm
3	0.937	4.200	728416	778585	98.98	152.03	PDA Ch1 214nm@4.8nm
4	0.988	1.500	2681	2926	0.36	396.04	PDA Ch1 214nm@4.8nm
5	1.043	1.100	403	615	0.05	151.99	PDA Ch1 214nm@4.8nm
6	1.074	1.150	435	757	0.06	152.92	PDA Ch1 214nm@4.8nm
7	1.118	1.150	548	936	0.07	152.99	PDA Ch1 214nm@4.8nm
8	1.137	1.000	191	398	0.03	152.02	PDA Ch1 214nm@4.8nm

Peak Results
Channel Name: MS TIC

	RT	Width (sec)	Area	Height	% Area	Base Peak (Combined) (m/z)	Channel Name
1	0.945	6.674	642523860	211521567	100.00	396.05	MS TIC

Match Plot

