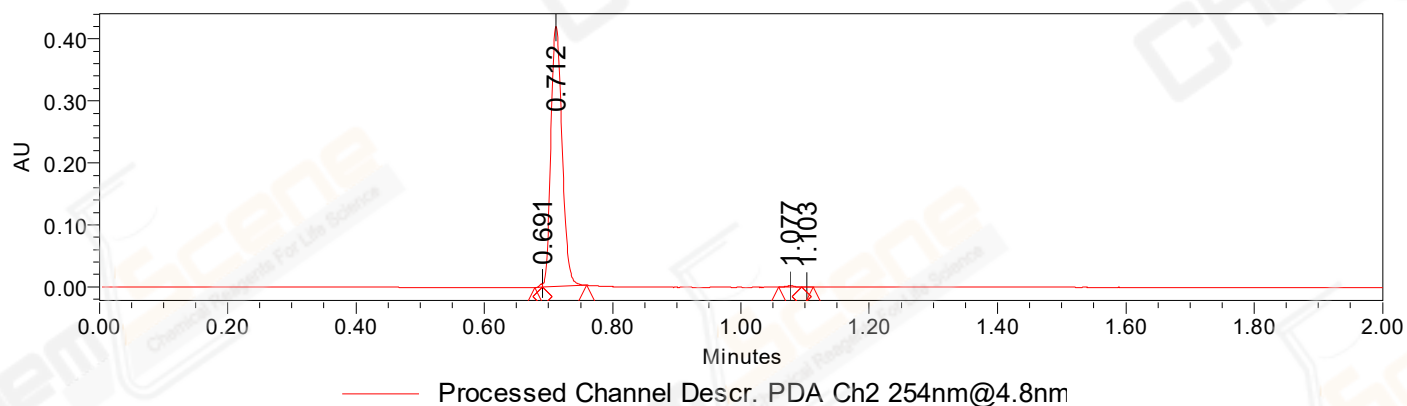


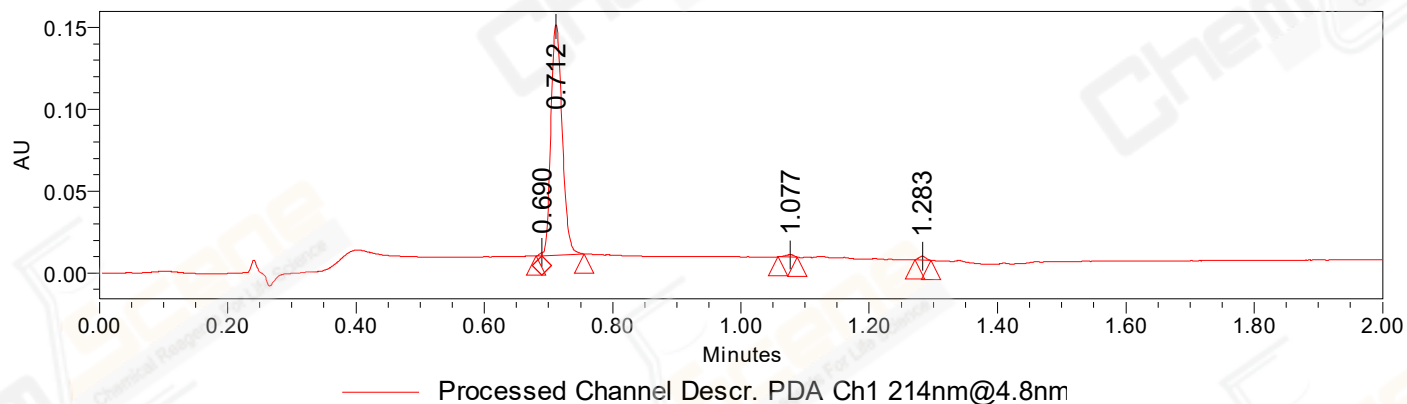
SAMPLE INFORMATION

CAS NO.:	52-39-1	Acquired By:	LY
Sample information:		Date Acquired:	12/14/2022 1:19:44 PM CST
Vial:	2:B,7	Acq. Method Set:	1_POS_2MIN
Injection #:	1	Date Processed:	12/14/2022 1:26:44 PM CST,
Injection Volume:	0.30 ul	Processing Method:	PDA_01, MS_scan
Run Time:	2.8 Minutes	Channel Name:	PDA Ch1 214nm@4.8nm, MS TIC,
Sample Set Name:	20221214	Column Name:	A-RP-985

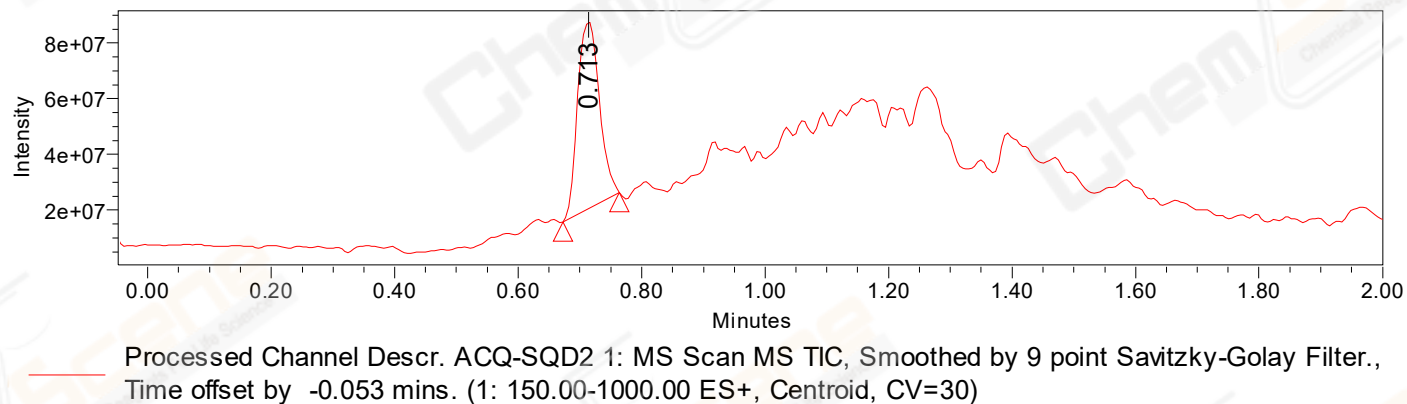
Auto-Scaled Chromatogram



Auto-Scaled Chromatogram



Auto-Scaled Chromatogram



Peak Results
Channel Name: PDA Ch2 254nm@4.8nm

	RT	Width (sec)	Area	Height	% Area	Base Peak (Combined) (m/z)	Channel Name
1	0.691	0.700	1817	5990	0.35	151.09	PDA Ch2 254nm@4.8nm
2	0.712	4.150	510023	419585	99.16	152.07	PDA Ch2 254nm@4.8nm
3	1.077	2.100	2150	2189	0.42	153.01	PDA Ch2 254nm@4.8nm
4	1.103	1.100	332	561	0.06	152.97	PDA Ch2 254nm@4.8nm

Peak Results
Channel Name: PDA Ch1 214nm@4.8nm

	RT	Width (sec)	Area	Height	% Area	Base Peak (Combined) (m/z)	Channel Name
1	0.690	0.550	520	1917	0.30	151.10	PDA Ch1 214nm@4.8nm
2	0.712	3.950	171430	140904	98.09	152.09	PDA Ch1 214nm@4.8nm
3	1.077	1.800	1170	1255	0.67	150.85	PDA Ch1 214nm@4.8nm
4	1.283	1.500	1640	2257	0.94	154.05	PDA Ch1 214nm@4.8nm

Peak Results
Channel Name: MS TIC

	RT	Width (sec)	Area	Height	% Area	Base Peak (Combined) (m/z)	Channel Name
1	0.713	5.513	165470204	67372953	100.00	343.14	MS TIC

Match Plot

