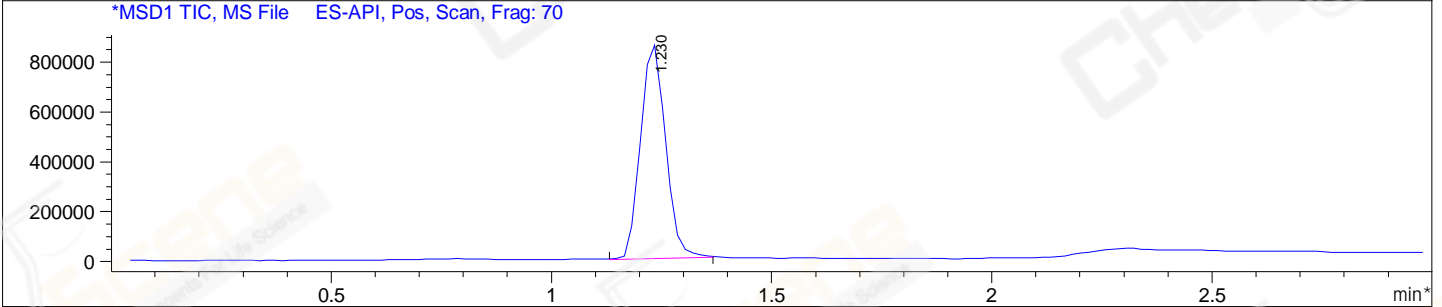
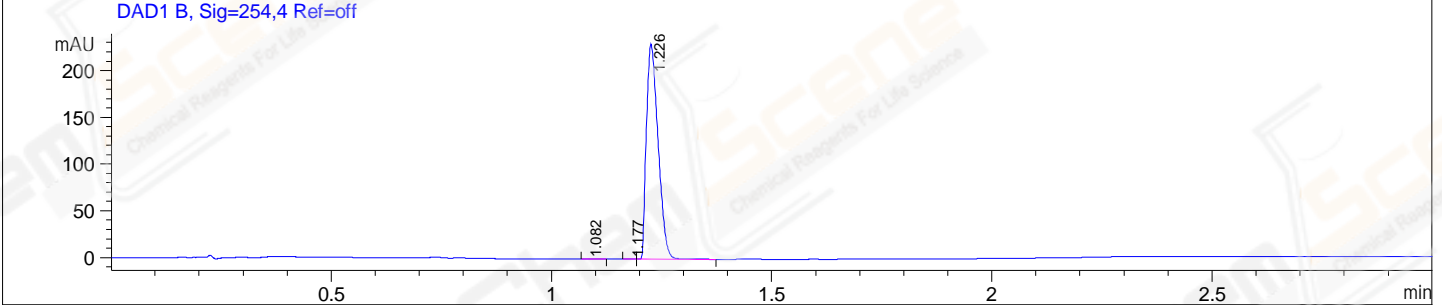
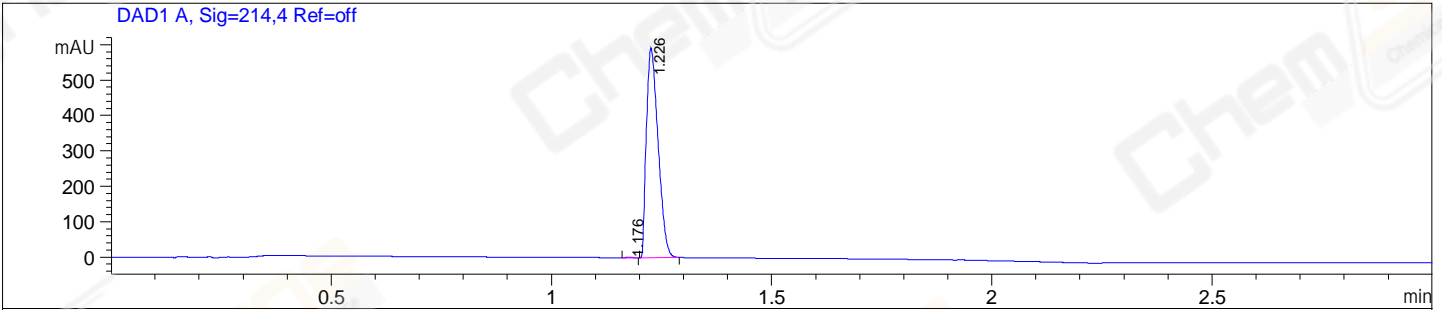


File E:\ChemStation\1\DATA\2024\2024-08\2024-08-23\CPK2024-823-24487-UPLC-MS-10-042846.D
 Injection Date : 23-Aug-24, 14:51:38 Tgt Mass(EZX) :
 Sample Name : CPK2024-823-24487 Location : P2-A-11
 Acq. Operator : admin Inj : 1
 Spec. Reported : MS Integration Inj Volume : 0.8 ul
 Acq. Method : E:\ChemStation\1\Methods\1-POS-UPLC3.0MIN(1.2)(150-1000).M
 Analysis Method : E:\CHEMSTATION\1\METHODS\1-POS-UPLC3.0MIN(1.2)(150-1000).M
 CAS NO. : 67915-31-5 WalkUp method: '1-POS-3MIN' Project: BIZ2024
 Method Info : Mobile Phase: A: water(0.01%TFA) B:ACN(0.01%TFA)
 Gradient: 5% to 95%B within 2.0 min
 Flow Rate :1.2ml/min
 Column :Shim-pack Scepter C18-120, 3.0*33mm,3um
 Oven Temperature : 45C



Integration Results for DAD1 A, Sig=214,4 Ref=off

RetTim	Width	Area	Height	Area%
1.18	0.02	0.75	0.75	0.07
1.23	0.03	1090.70	592.67	99.93

Integration Results for DAD1 B, Sig=254,4 Ref=off

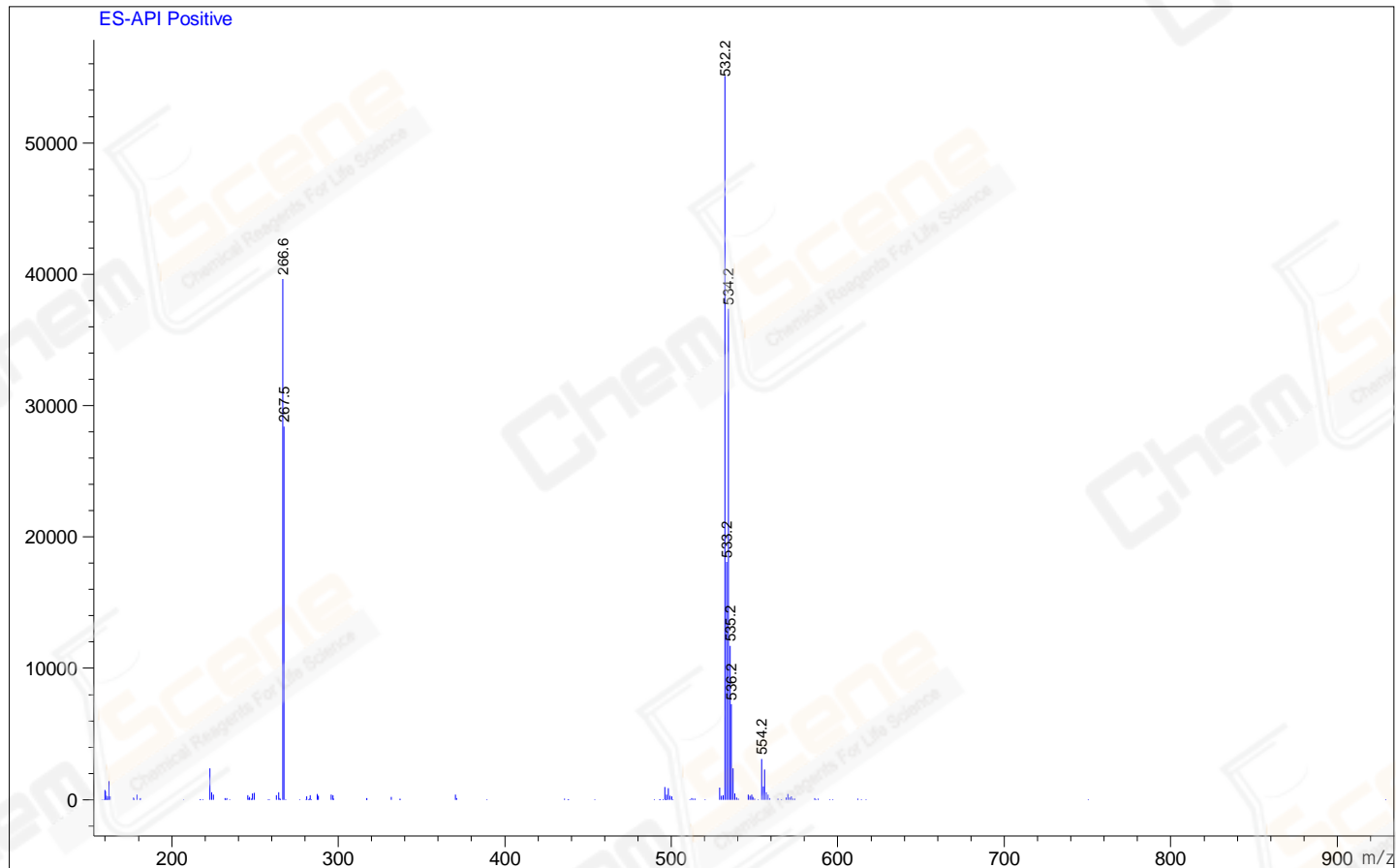
RetTim	Width	Area	Height	Area%
1.08	0.02	0.35	0.22	0.08
1.18	0.01	0.26	0.28	0.06
1.23	0.03	423.42	229.80	99.86

Integration Results for MSD1 TIC, MS File

RetTim	Width	Area	Height	Area%
1.23	0.06	3402270.50	881017.19	100.00

Ret. Time: 1.23

<<<< POSITIVE SPECTRA >>>>



*** End of Report ***