

File ..22-12-18\HZB15891-031-P-UPLC-MS-03-047319.D Tgt Mass (EZX):

Injection Date : 18-Dec-22, 17:24:40 Seq. Line : 0

Sample Name : HZB15891-031-P Location : P1-D-05

Acq. Operator : LiYong Inj : 1

Spec. Reported : MS Integration Inj Volume : 0.4 ul

Acq. Method : E:\Chem32\1\Methods\1-POS-UPLC5.0MIN(0.8ML)-(150-2000).M

Analysis Method : E:\CHEM32\1\METHODS\1-POS-UPLC5.0MIN(0.8ML)-(150-2000).M

CAS NO. : 1001417-92-0 WalkUp method: '1-POS-5MIN' Project: HM-1384-001KF

Method Info : Mobile Phase: A: water(0.01%TFA) B:ACN(0.01%TFA)

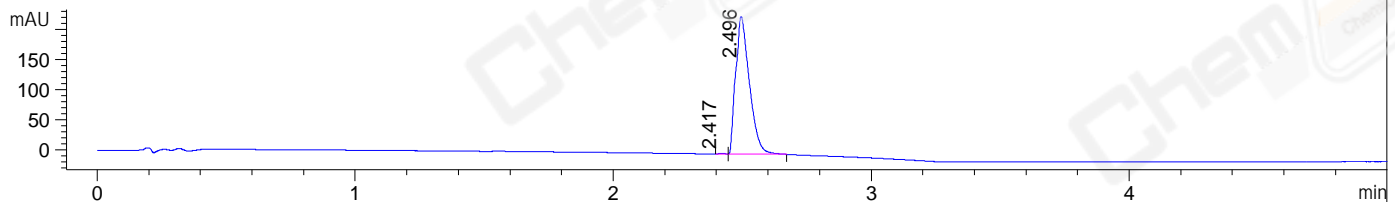
Gradient: 5% to 95%B within 3 min

Flow Rate : 0.8ml/min

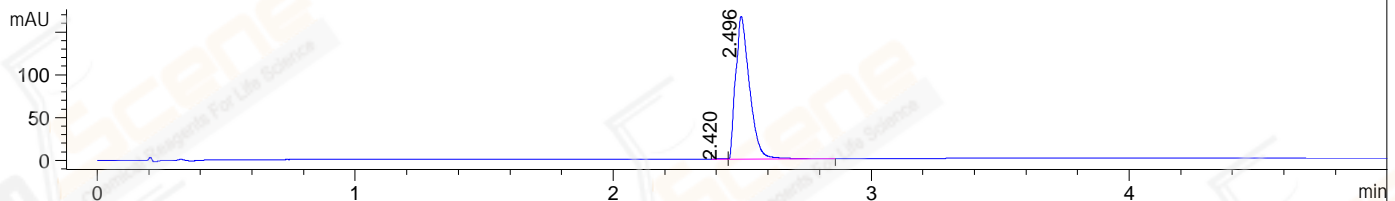
Column : Poroshell 120 EC- C18, 2.1*50mm,1.9um

Oven Temperature : 45C

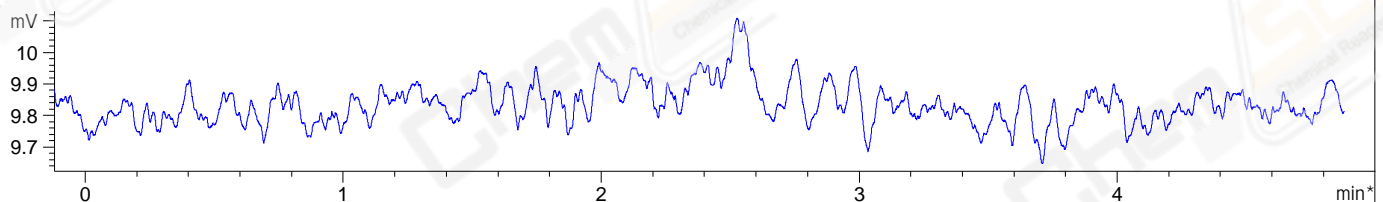
DAD1 A, Sig=214,4 Ref=off



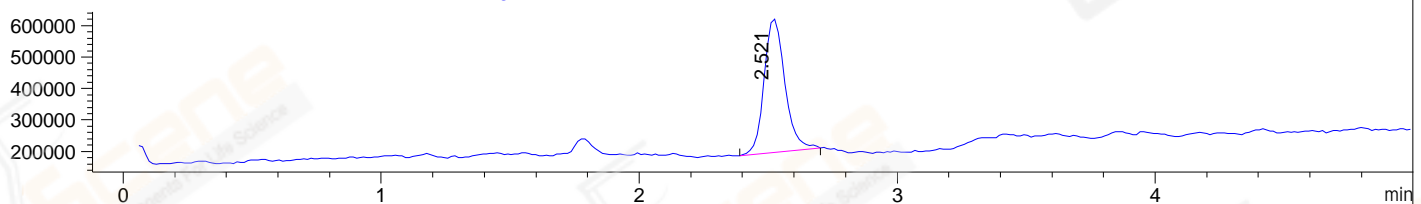
DAD1 B, Sig=254,4 Ref=off



*ELS1 A, ELSD Signal



MSD1 TIC, MS File ES-API, Pos, Scan, Frag: 70



Integration Results for DAD1 A, Sig=214,4 Ref=off

RetTim	Width	Area	Height	Area%	MS (+)
2.42	0.04	1.57	0.70	0.19	83
2.50	0.06	843.08	228.69	99.81	524

Integration Results for DAD1 B, Sig=254,4 Ref=off

RetTim	Width	Area	Height	Area%	MS (+)
2.42	0.04	1.28	0.54	0.21	83
2.50	0.06	621.27	166.91	99.79	524

Integration Results for ELS1 A, ELSD Signal

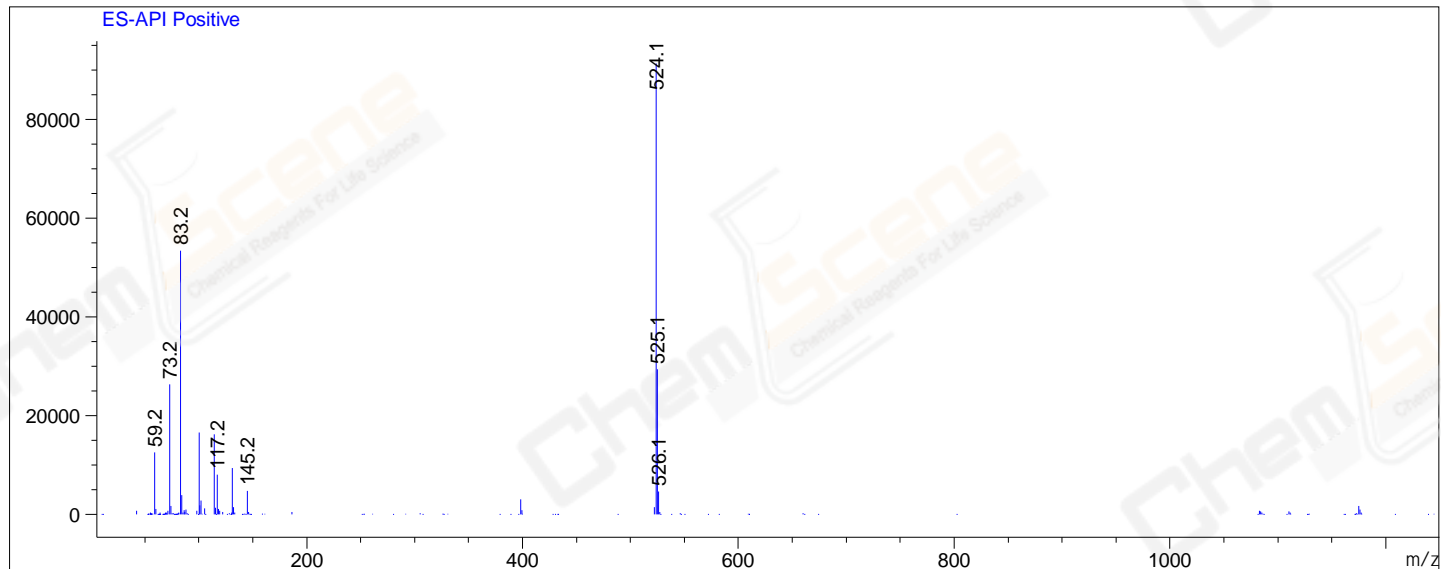
RetTim	Width	Area	Height	Area%	MS (+)
--------	-------	------	--------	-------	--------

Integration Results for MSD1 TIC, MS File

RetTim	Width	Area	Height	Area%	MS (+)
--------	-------	------	--------	-------	--------



Ret. Time: 2.52 <<<< POSITIVE SPECTRA >>>>



*** End of Report ***