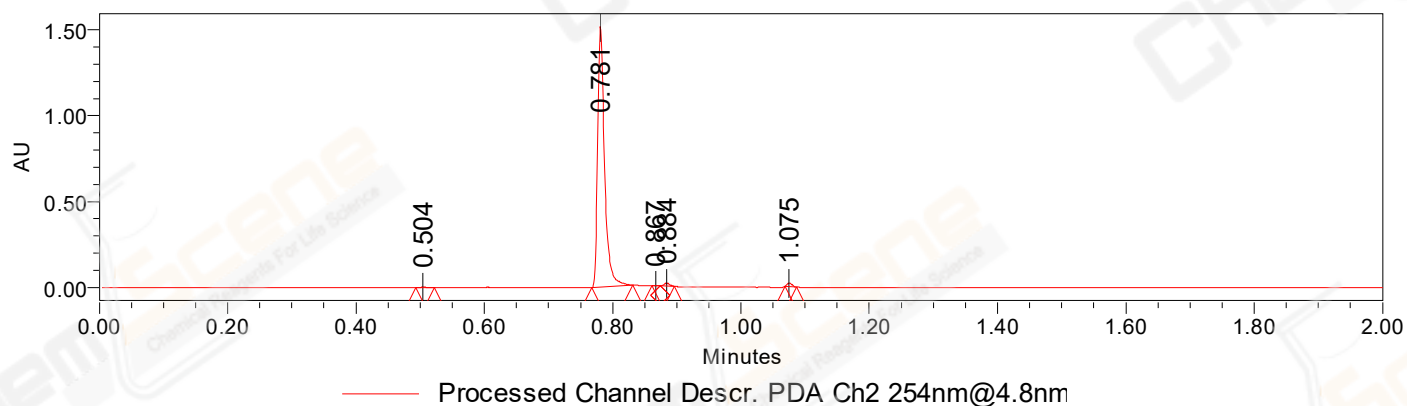


SAMPLE INFORMATION

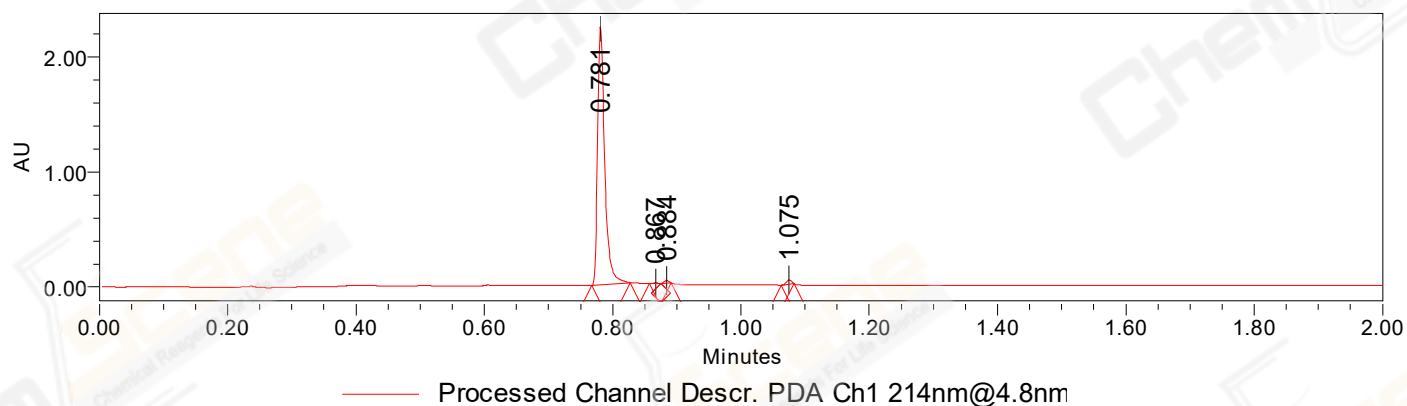
Sample Name: BIZ2022-D28-WLQ19
CAS NO.: 151720-43-3
Vial: 2:D,1
Injection #: 1
Injection Volume: 0.30 ul
Run Time: 2.8 Minutes
Sample Set Name: 20221229

Acquired By: LY
Date Acquired: 12/29/2022 4:23:18 PM CST
Acq. Method Set: 1_POS_2MIN
Date Processed: 12/30/2022 10:11:55 AM CST,
Processing Method: PDA_01, MS_scan
Channel Name: PDA Ch1 214nm@4.8nm, MS TIC,
Column Name: A-RP-985

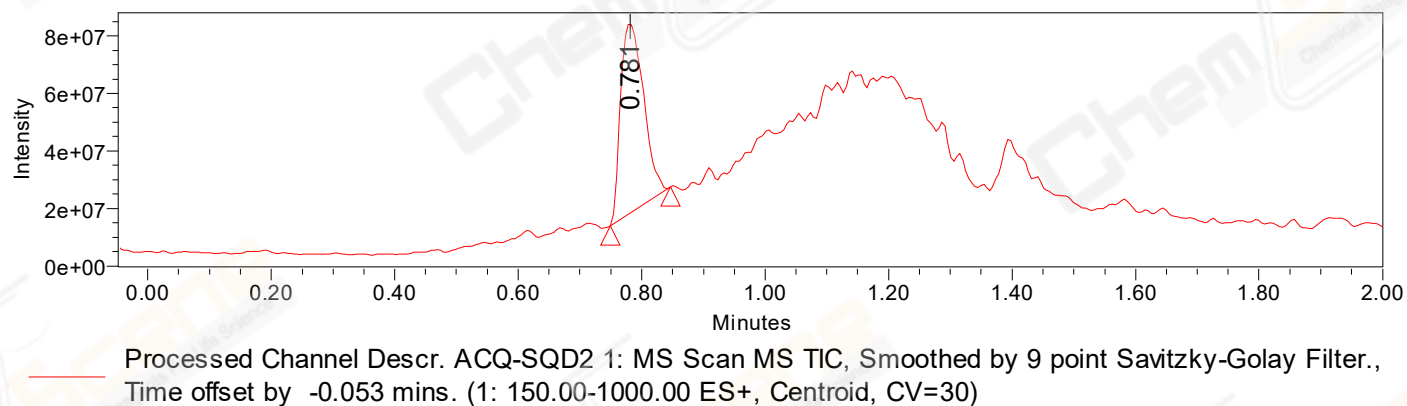
Auto-Scaled Chromatogram



Auto-Scaled Chromatogram



Auto-Scaled Chromatogram



Peak Results
Channel Name: PDA Ch2 254nm@4.8nm

	RT	Width (sec)	Area	Height	% Area	Base Peak (Combined) (m/z)	Channel Name
1	0.504	1.750	1617	2082	0.14	150.97	PDA Ch2 254nm@4.8nm
2	0.781	3.850	1131528	1516082	98.04	151.98	PDA Ch2 254nm@4.8nm
3	0.867	0.750	960	2348	0.08	152.98	PDA Ch2 254nm@4.8nm
4	0.884	1.300	9815	16489	0.85	151.03	PDA Ch2 254nm@4.8nm
5	1.075	1.050	10213	19303	0.88	152.10	PDA Ch2 254nm@4.8nm

Peak Results
Channel Name: PDA Ch1 214nm@4.8nm

	RT	Width (sec)	Area	Height	% Area	Base Peak (Combined) (m/z)	Channel Name
1	0.781	3.600	1727549	2246097	98.13	151.98	PDA Ch1 214nm@4.8nm
2	0.867	1.050	2096	4256	0.12	152.10	PDA Ch1 214nm@4.8nm
3	0.884	1.000	11959	23679	0.68	151.00	PDA Ch1 214nm@4.8nm
4	1.075	1.200	18935	36456	1.08	152.07	PDA Ch1 214nm@4.8nm

Peak Results
Channel Name: MS TIC

	RT	Width (sec)	Area	Height	% Area	Base Peak (Combined) (m/z)	Channel Name
1	0.781	5.803	170149995	66386927	100.00	384.02	MS TIC

Match Plot

