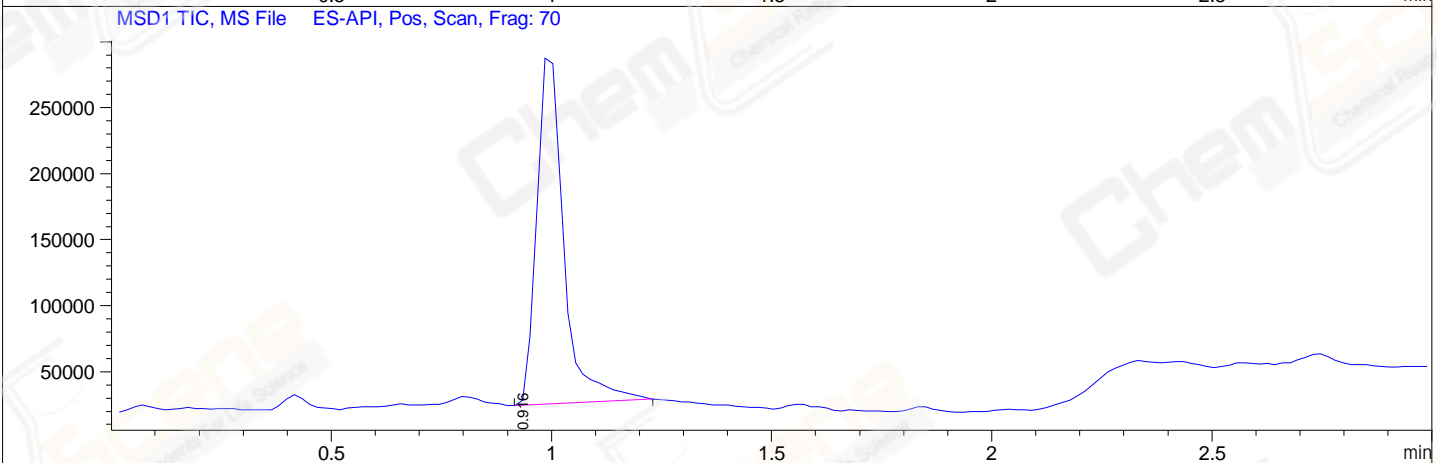
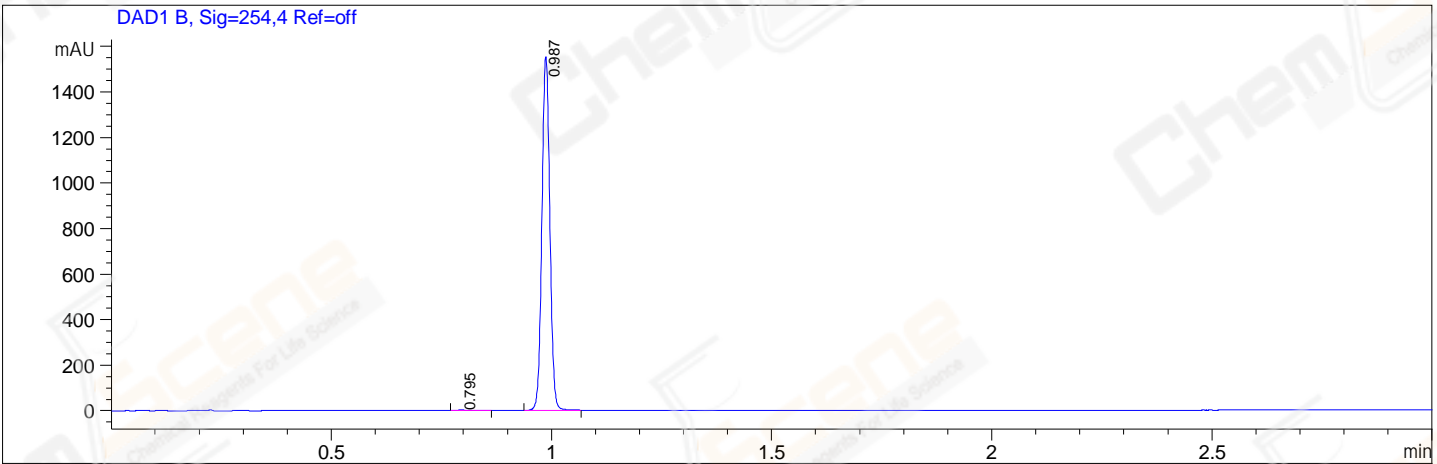


File E:\data\202312\20231226\CPK2023-D25-246894-UPLC-MS-10-023069.D
 Injection Date : 26-Dec-23, 10:50:31 Tgt Mass(EZX) :
 Sample Name : CPK2023-D25-246894 Location : P1-C-05
 Acq. Operator : LY_2278 Inj : 1
 Spec. Reported : MS Integration Inj Volume : 0.8 ul
 Acq. Method : E:\ChemStation\1\Methods\1-POS-UPLC3.0MIN(1.2)(150-1000).M
 Analysis Method : E:\CHEMSTATION\1\METHODS\1-POS-UPLC3.0MIN(1.2)(150-1000).M
 CAS NO. : 605-94-7 WalkUp method: '1-POS-3MIN' Project: CPK2023
 Method Info : Mobile Phase: A: water(0.01%TFA) B:ACN(0.01%TFA)
 Gradient: 5% to 95%B within 2.0 min
 Flow Rate :1.2ml/min
 Column :Shim-pack Scepter C18-120, 3.0*33mm,3um
 Oven Temperature : 45C



Integration Results for DAD1 B, Sig=254,4 Ref=off

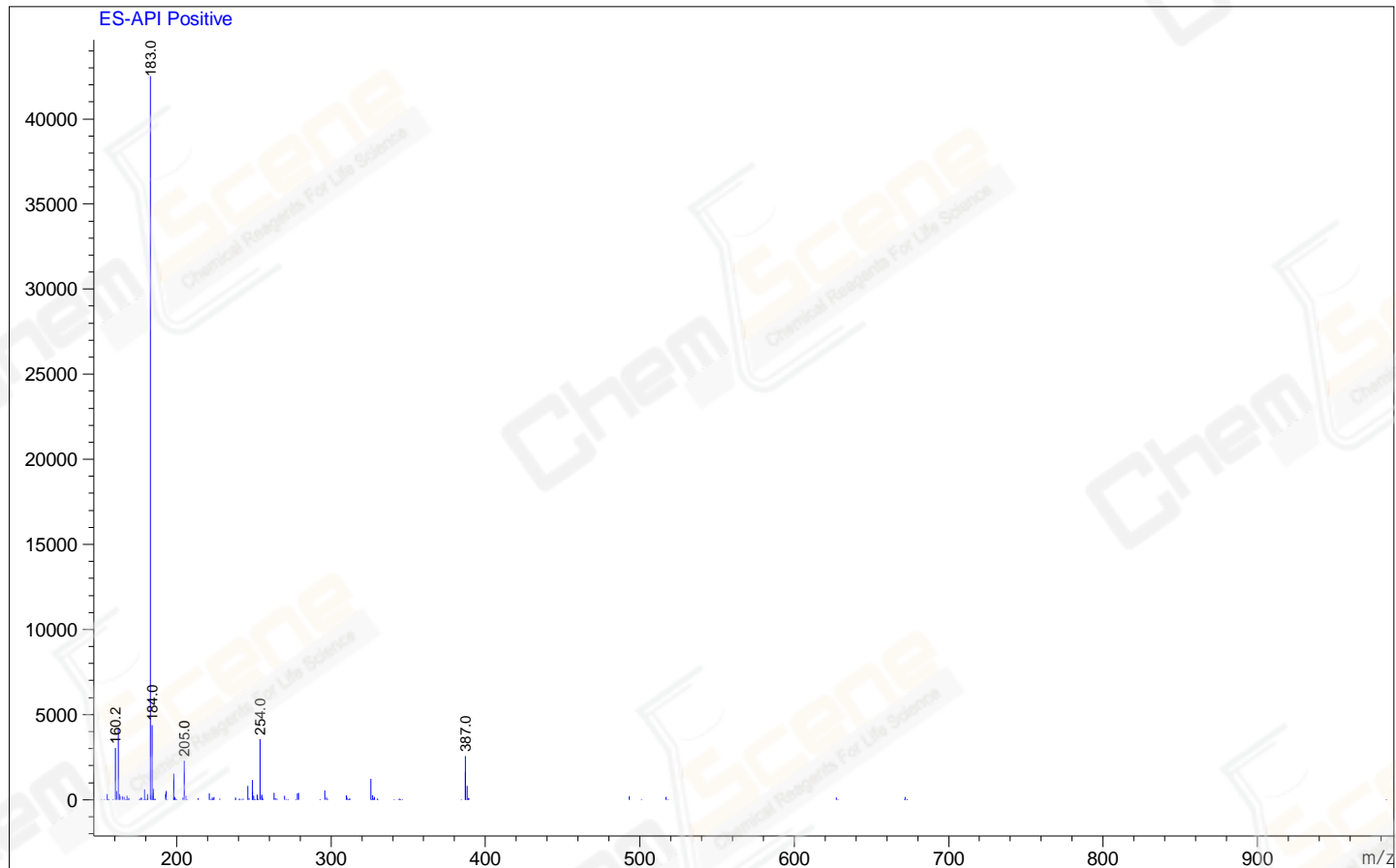
RetTim	Width	Area	Height	Area%
0.80	0.02	2.27	1.57	0.12
0.99	0.02	1948.55	1555.91	99.88

Integration Results for MSD1 TIC, MS File

RetTim	Width	Area	Height	Area%
0.92	0.07	1122840.88	13.21	100.00

Ret. Time: 0.92

<<<< POSITIVE SPECTRA >>>>



*** End of Report ***