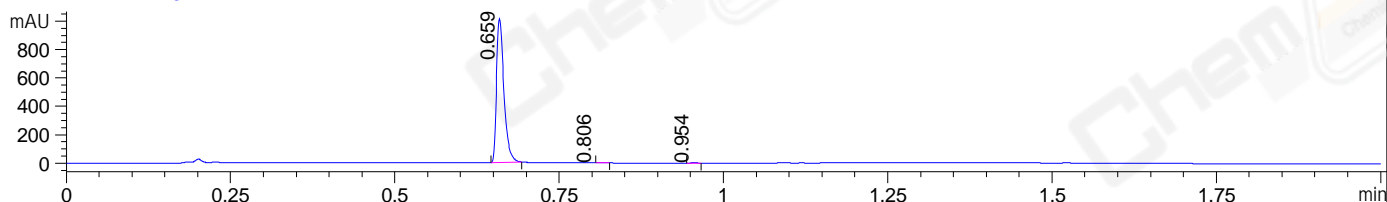
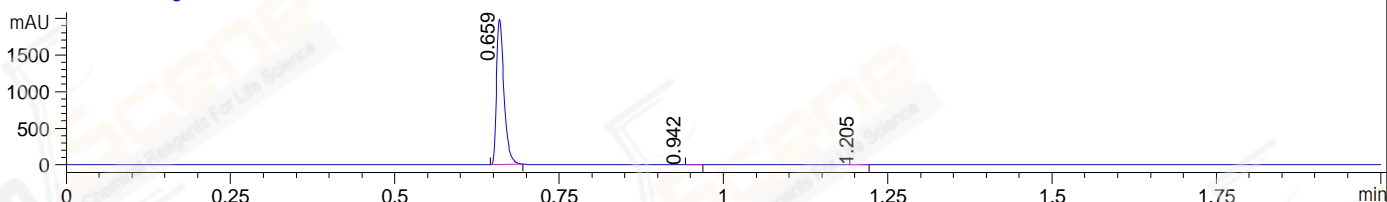


File ..ta\LY\2021-10-08\CPK2021-008-24753-030349.D Tgt Mass (EZX):  
 Injection Date : 8 Oct 21 8:01 pm +0800 Seq. Line : 0  
 Sample Name : CPK2021-008-24753 Location : P1-A-09  
 Acq. Operator : LY\_2278 Inj : 1  
 Spec. Reported : MS Integration Inj Volume : 0.5 ul  
 Acq. Method : D:\LCMS\Methods\1-POS-UPLC2.0MIN(0.8ML)-(150-1000).M  
 Analysis Method : D:\LCMS\METHODS\1-POS-UPLC2.0MIN(0.8ML)-(150-1000).M  
 CAS NO. : 1221186-53-3 Walkup method: '1-POS-2MIN' Target:  
 Method Info : Mobile Phase: A: water(0.01%TFA) B:ACN(0.01%TFA)  
 Gradient: 5% to 95%B within 0.6 min  
 Flow Rate : 0.8ml/min  
 Column : Poroshell 120 EC- C18, 2.1\*50mm,1.9um A-RP-928  
 Oven Temperature : 45C

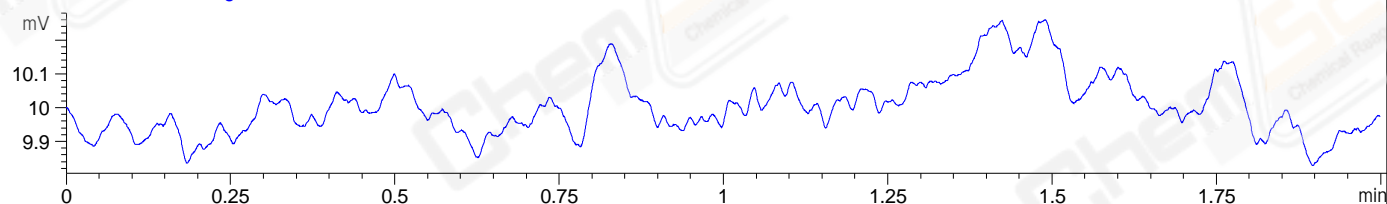
DAD1 A, Sig=214,4 Ref=off



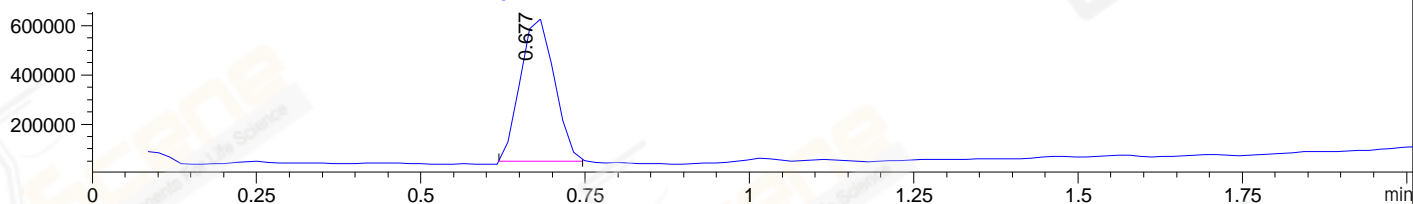
DAD1 B, Sig=254,4 Ref=off



ELS1 A, ELSD Signal



MSD1 TIC, MS File ES-API, Pos, Scan, Frag: 70



Integration Results for DAD1 A, Sig=214,4 Ref=off

RetTim	Width	Area	Height	Area%	MS (+)
0.66	0.01	792.33	1016.26	99.43	373
0.81	0.01	2.10	-0.01	0.26	175
0.95	0.01	2.46	3.80	0.31	175

Integration Results for DAD1 B, Sig=254,4 Ref=off

RetTim	Width	Area	Height	Area%	MS (+)
0.66	0.01	1560.13	1987.49	99.65	373
0.94	0.01	2.33	0.03	0.15	175
1.20	0.01	3.13	4.06	0.20	175

Integration Results for ELS1 A, ELSD Signal

RetTim	Width	Area	Height	Area%	MS (+)
--------	-------	------	--------	-------	--------

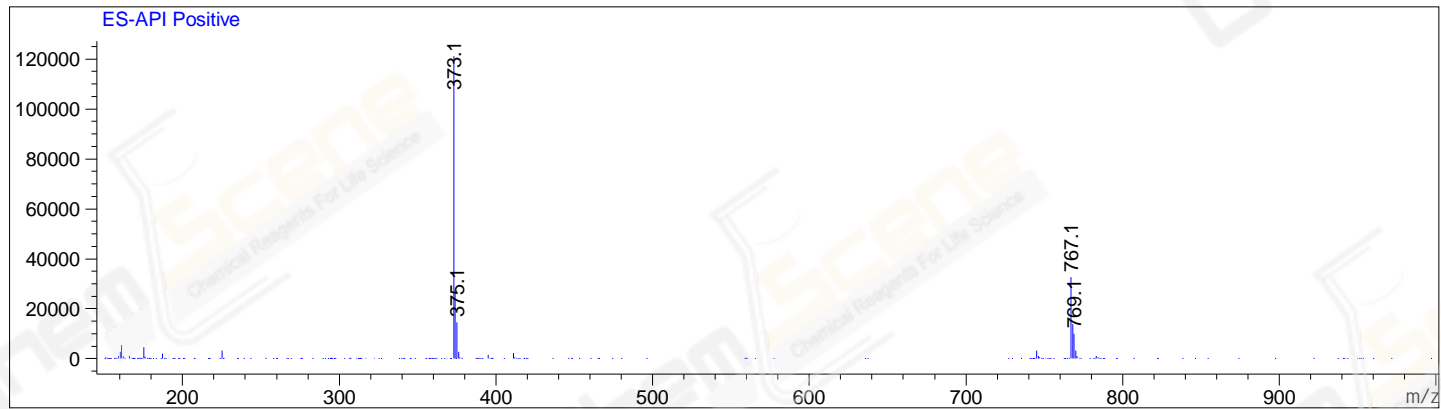
Integration Results for MSD1 TIC, MS File

0.68 0.06 2050522.38 598876.19 100.00 373

RetTim	Width	Area	Height	Area%	MS(+)
--------	-------	------	--------	-------	-------

Ret. Time: 0.68

<<<< POSITIVE SPECTRA >>>>



\*\*\* End of Report \*\*\*