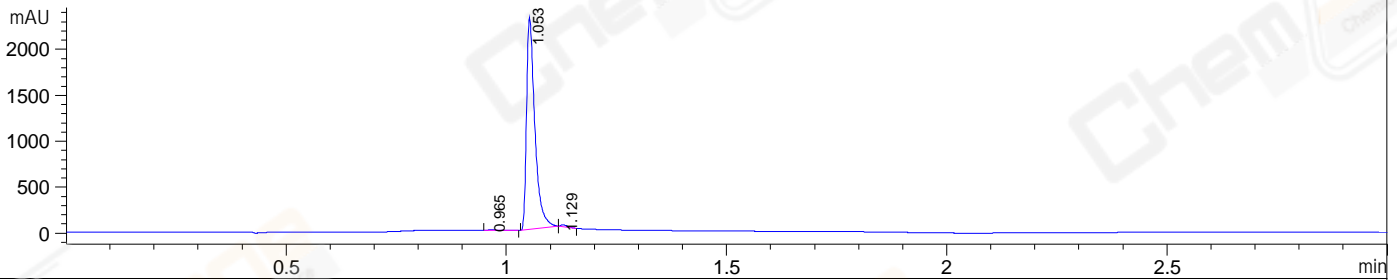
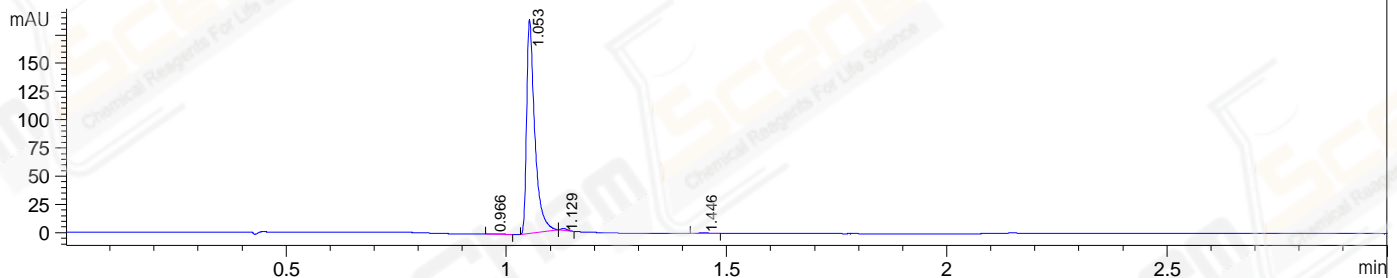


File E:\ChemStation\1\DATA\2023\2023-05\2023-05-10\CPK2023-505-248003-LCMS-20-003844.D
Injection Date : 10-May-23, 13:59:38 Tgt Mass(EZX) :
Sample Name : CPK2023-505-248003 Location : P1-E-05
Acq. Operator : LY_2278 Inj : 1
Spec. Reported : MS Integration Inj Volume : 1 ul
Acq. Method : E:\ChemStation\1\Methods\1-POS-3MIN(1.8ML)-(150-1000).M
Analysis Method : E:\CHEMSTATION\1\METHODS\1-POS-3MIN(1.8ML)-(150-1000).M
CAS NO. : 989-51-5 WalkUp method: '1-POS-3MIN' Project: CPK2023
Method Info : Mobile Phase: A: water(0.01%FA) B:ACN(0.01%FA)
Flow Rate : 1.8ml/min
Column : SunFire C18, 4.6*50mm, 3.5um
Oven Temperature : 45C

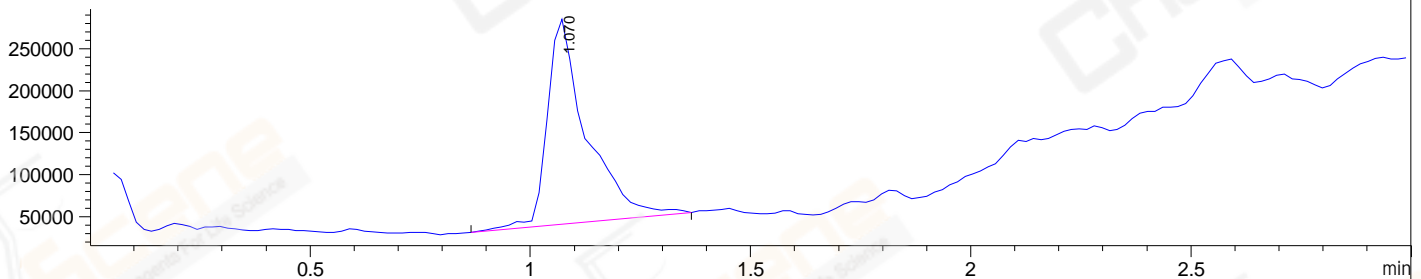
DAD1 A, Sig=214,4 Ref=off



DAD1 B, Sig=254,4 Ref=off



MSD1 TIC, MS File ES-API, Pos, Scan, Frag: 70



Integration Results for DAD1 A, Sig=214,4 Ref=off

RetTim	Width	Area	Height	Area%
0.97	0.02	9.57	8.05	0.31
1.05	0.02	3025.77	2303.27	98.99
1.13	0.02	21.31	21.30	0.70

Integration Results for DAD1 B, Sig=254,4 Ref=off

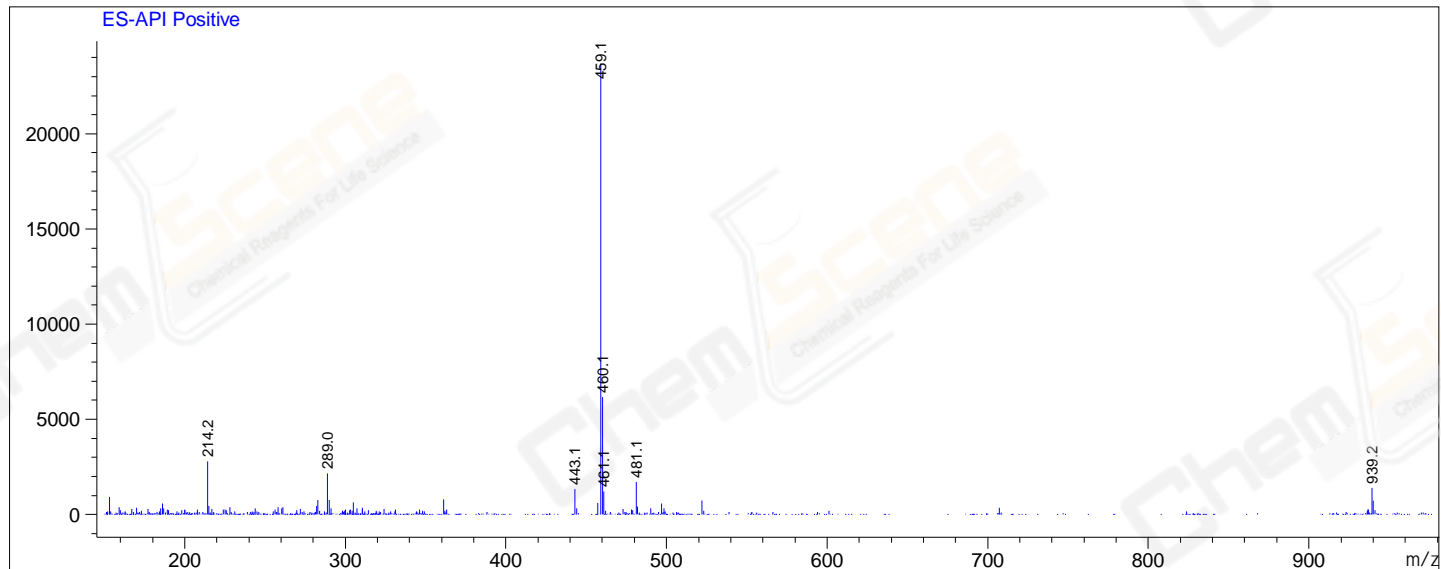
RetTim	Width	Area	Height	Area%
0.97	0.02	0.30	0.22	0.12
1.05	0.02	243.07	189.61	99.07
1.13	0.01	1.63	1.76	0.66
1.45	0.02	0.36	0.26	0.15

Integration Results for MSD1 TIC, MS File

RetTim	Width	Area	Height	Area%
1.07	0.09	1510075.38	243946.09	100.00

Ret. Time: 1.07

<<<< POSITIVE SPECTRA >>>>



*** End of Report ***