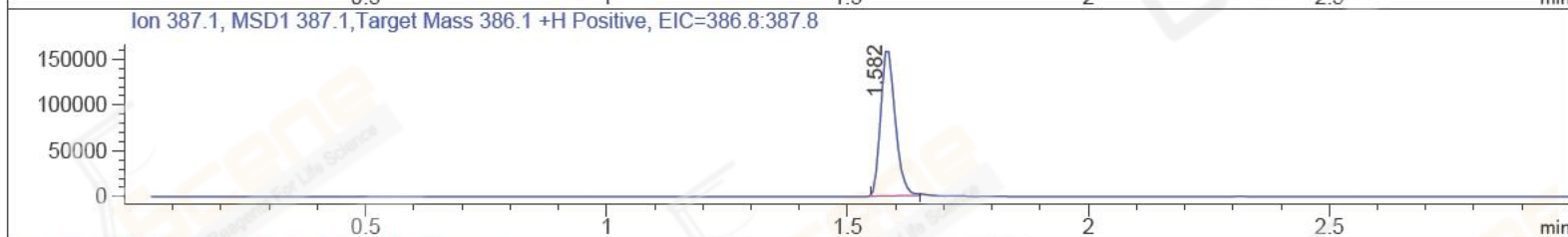
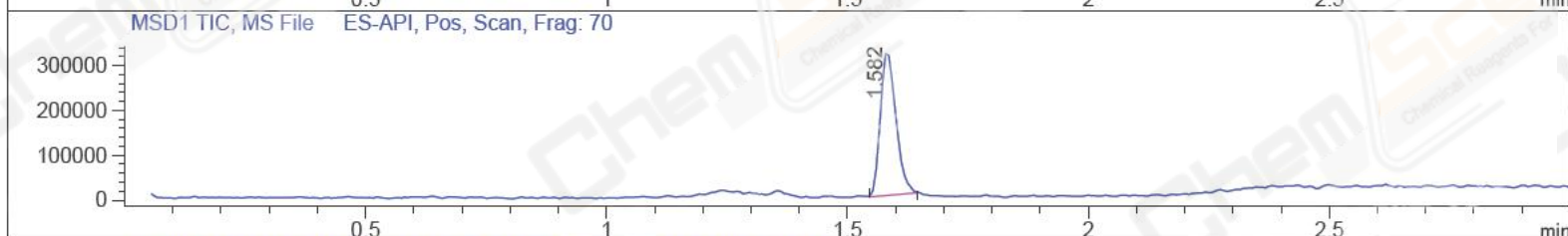
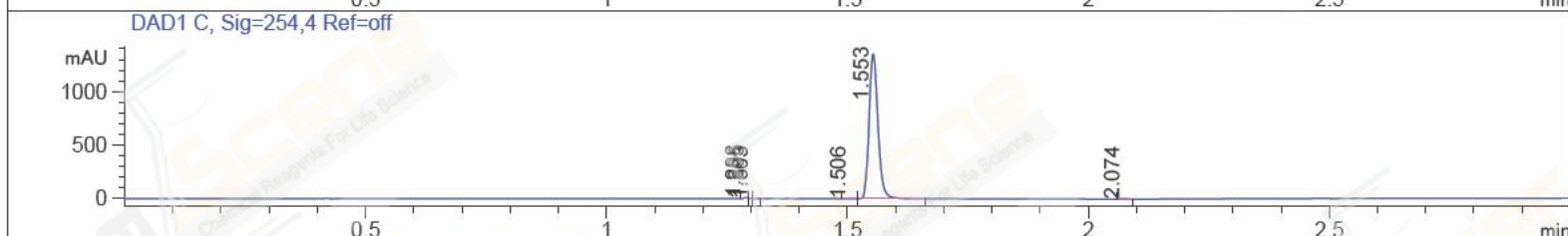
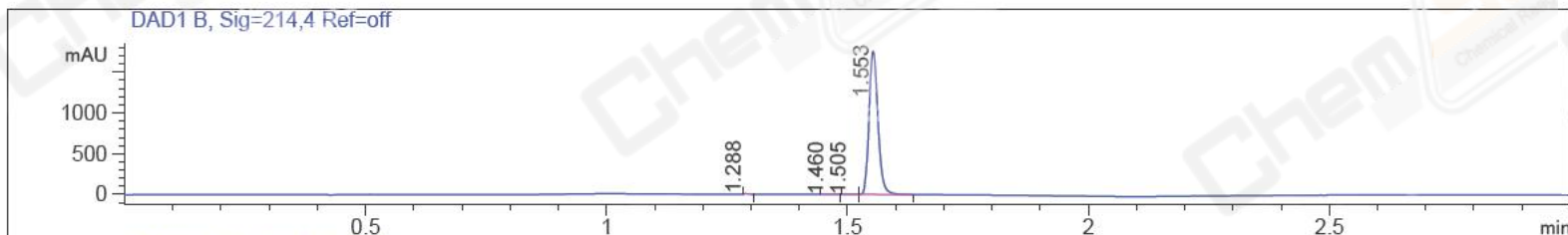


File ..0613 2017-06-13 08-41-18\BIZ2017-613-WYQ4.D Tgt Mass (CHM):  
 Injection Date : 13 Jun 17 11:42 am +0800 Seq. Line : 38  
 Sample Name : BIZ2017-613-WYQ4 Location : P1-A-07  
 Acq. Operator : CLJ\_701 Inj : 1  
 Spec. Reported : MS Integration Inj Volume : 1 ul  
 Acq. Method : D:\chem32\1\DATA\20170613\20170613 2017-06-13 08-41-18\1-POS-3MIN.M  
 Analysis Method : D:\CHEM32\1\DATA\20170613\20170613 2017-06-13 08-41-18\1-POS-3MIN.M  
 Catalog No : CS-5946 Batch#24917 A-RP-186  
 Method Info : Mobile Phase: A: water(0.01%TFA) B:ACN(0.01%TFA)  
 Gradient: 5% to 95%B within 1.3 min  
 Flow Rate :1.8ml/min  
 Column :SunFire C18, 4.6\*50mm,3.5um A-RP-186  
 Oven Temperature : 45C



Integration Results for DAD1 B, Sig=214,4 Ref=off

RetTim	Width	Area	Height	Area%	MS (+)
1.29	0.01	4.74	8.14	0.21	ND
1.46	0.03	1.73	1.04	0.08	ND
1.51	0.02	2.40	2.08	0.11	ND
1.55	0.02	2264.72	1754.80	99.61	387

Integration Results for DAD1 C, Sig=254,4 Ref=off

RetTim	Width	Area	Height	Area%	MS (+)
1.29	0.01	4.29	8.97	0.25	520
1.29	0.01	1.46	4.26	0.08	ND
1.30	0.01	0.73	1.64	0.04	ND
1.51	0.17	2.15	1.83	0.12	ND
1.55	0.02	1731.79	1350.66	99.45	387
2.07	0.56	1.02	0.91	0.06	233

Integration Results for MSD1 TIC, MS File

RetTim	Width	Area	Height	Area%	MS (+)
--------	-------	------	--------	-------	--------

1.58 0.04 719777.69 326076.50 100.00 387

Ret. Time: 1.58

<<<< POSITIVE SPECTRA >>>>

