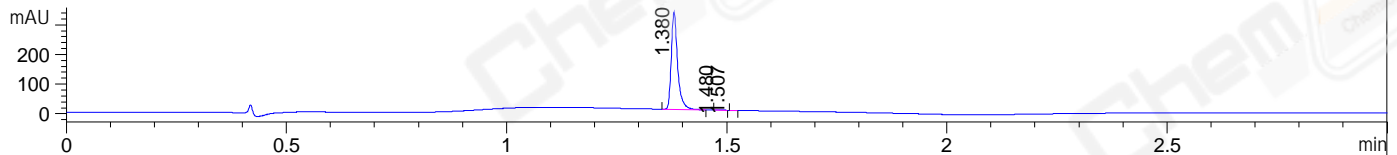
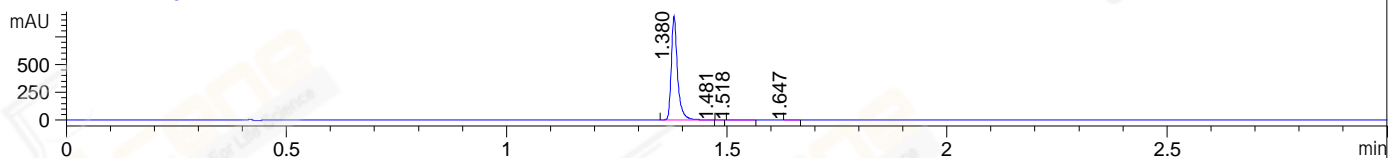


File ..3\Data\20171010\20171010\LJ2017-1009-0033.D Tgt Mass (CHM):  
Injection Date : 10 Oct 17 7:49 pm +0800 Seq. Line : 130  
Sample Name : LJ2017-1009-0033 Location : P2-A-07  
Acq. Operator : SYSTEM Inj : 1  
Spec. Reported : MS Integration Inj Volume : 1 ul  
Acq. Method : D:\LCMS03\Data\20171010\20171010\1-POS-3MIN.M  
Analysis Method : D:\LCMS03\Data\20171010\20171010\1-POS-3MIN.M  
CAS NO. : 582-24-1  
Method Info : Mobile Phase: A: water(0.01%TFA) B:ACN(0.01%TFA)  
Gradient: 5% to 95%B within 1.3 min  
Flow Rate :1.8ml/min  
Column :SunFire C18, 4.6\*50mm,3.5um A-RP-186  
Oven Temperature : 45C

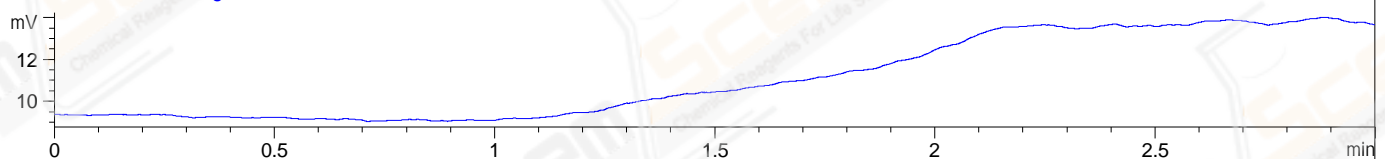
DAD1 A, Sig=214,4 Ref=off



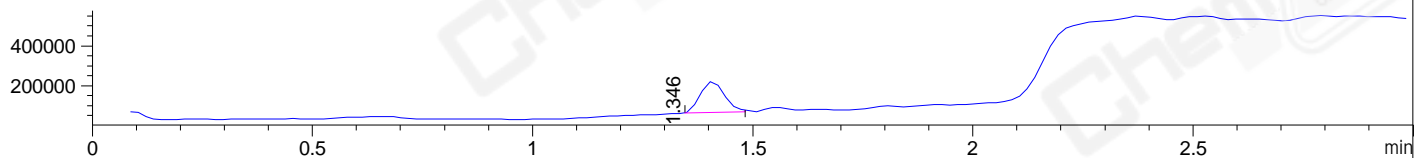
DAD1 B, Sig=254,4 Ref=off



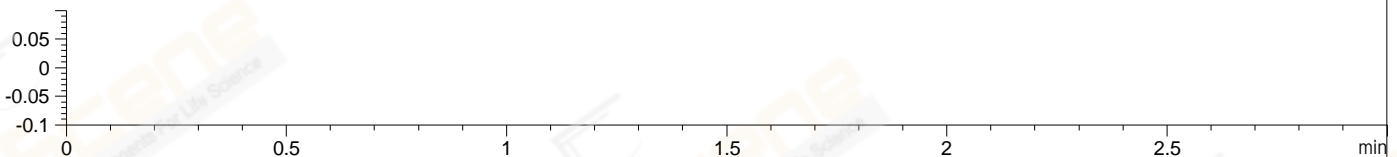
ELS1 A, ELSD Signal



MSD1 TIC, MS File ES-API, Pos, Scan, Frag: 70



Ion 0, MSD1 0, Target Mass 0 Positive, EIC=-0.30:0.70



## Integration Results for DAD1 A, Sig=214,4 Ref=off

RetTim	Width	Area	Height	Area%	MS (+)
1.38	0.02	328.91	326.39	99.73	137
1.48	0.01	0.53	0.63	0.16	130
1.51	0.01	0.35	-0.09	0.11	130

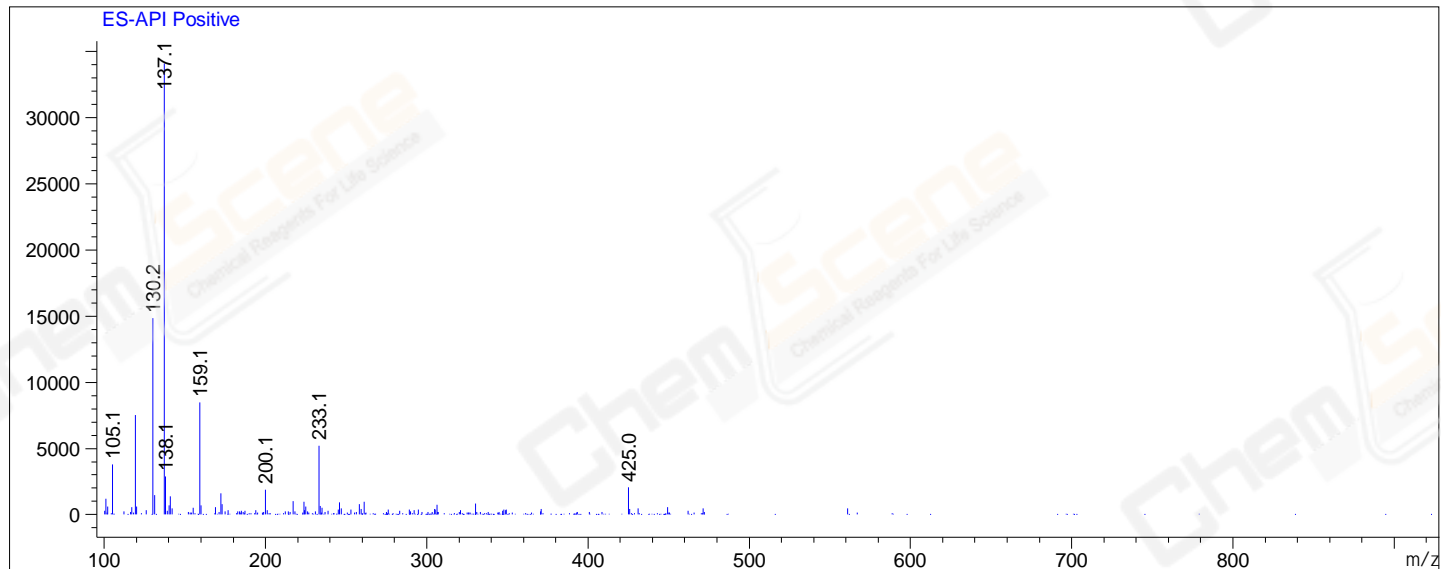
## Integration Results for DAD1 B, Sig=254,4 Ref=off

RetTim	Width	Area	Height	Area%	MS (+)
1.38	0.01	911.99	926.72	99.87	137
1.48	0.01	0.06	0.09	0.01	130
1.52	0.01	0.65	0.67	0.07	130
1.65	0.02	0.47	0.44	0.05	130

## Integration Results for MSD1 TIC, MS File

RetTim	Width	Area	Height	Area%	MS (+)
1.35	0.06	589439.13	1299.79	100.00	137

Ret. Time: 1.35 <<<< POSITIVE SPECTRA >>>>



\*\*\* End of Report \*\*\*