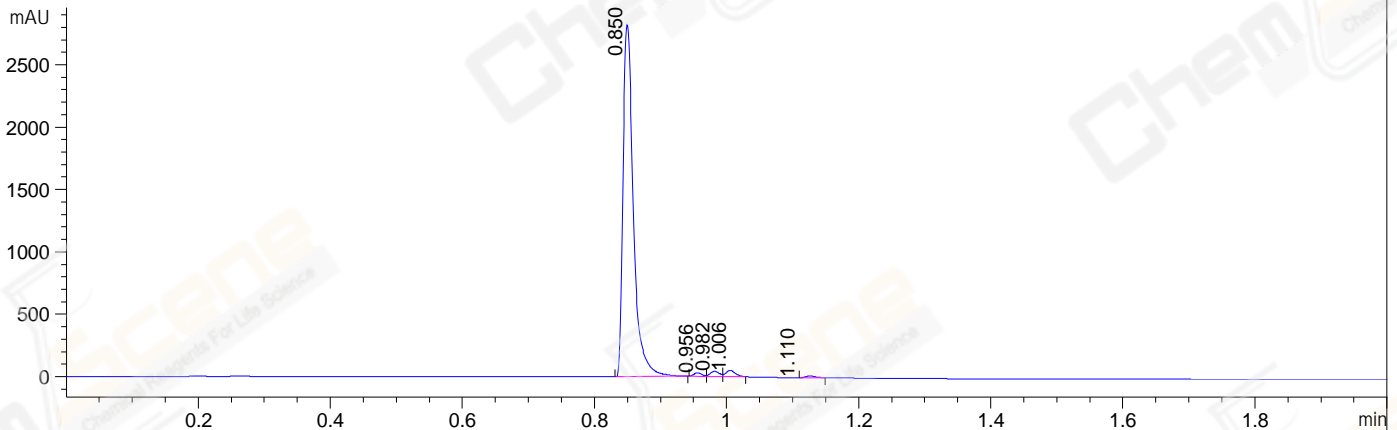
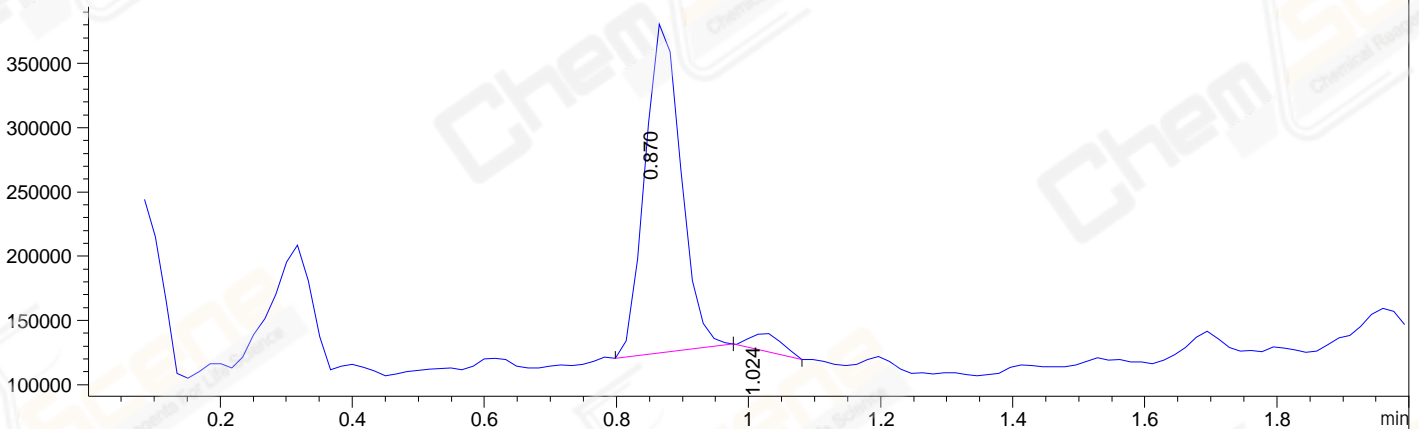


File ..04-13\CPK2023-413-24924-UPLC-MS-01-015930.D Tgt Mass (EZ):
 Injection Date : 13 Apr 23 3:03 pm +0800 Seq. Line : 0
 Sample Name : CPK2023-413-24924 Location : P2-B-02
 Acq. Operator : LY_2278 Inj : 1
 Spec. Reported : MS Integration Inj Volume : 0.5 ul
 Acq. Method : D:\LCMS\Methods\1-POS-UPLC2.0MIN(0.8ML)-(150-1000).M
 Analysis Method : D:\LCMS\METHODS\1-POS-UPLC2.0MIN(0.8ML)-(150-1000).M
 CAS NO. : 1143-70-0 Walkup method: '1-POS-2MIN' Project: CPK2023 Target:
 Method Info : Mobile Phase: A: water(0.01%TFA) B:ACN(0.01%TFA)
 Gradient: 5% to 95%B within 0.6 min
 Flow Rate : 0.8ml/min
 Column : Poroshell 120 EC- C18, 2.1*50mm,1.9um A-RP-517
 Oven Temperature : 45C

DAD1 A, Sig=214,4 Ref=off



MSD1 TIC, MS File ES-API, Pos, Scan, Frag: 70



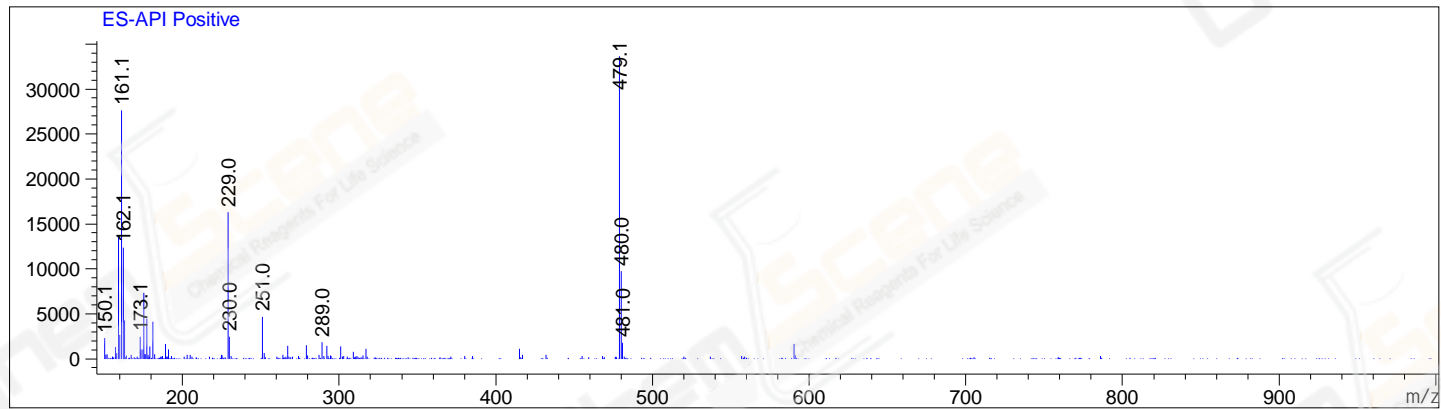
Integration Results for DAD1 A, Sig=214,4 Ref=off

RetTim	Width	Area	Height	Area%	MS (+)
0.85	0.02	3091.26	2819.96	96.10	161
0.96	0.01	23.84	28.42	0.74	161
0.98	0.02	39.92	42.60	1.24	161
1.01	0.02	48.32	50.57	1.50	161
1.11	0.02	13.48	-0.09	0.42	161

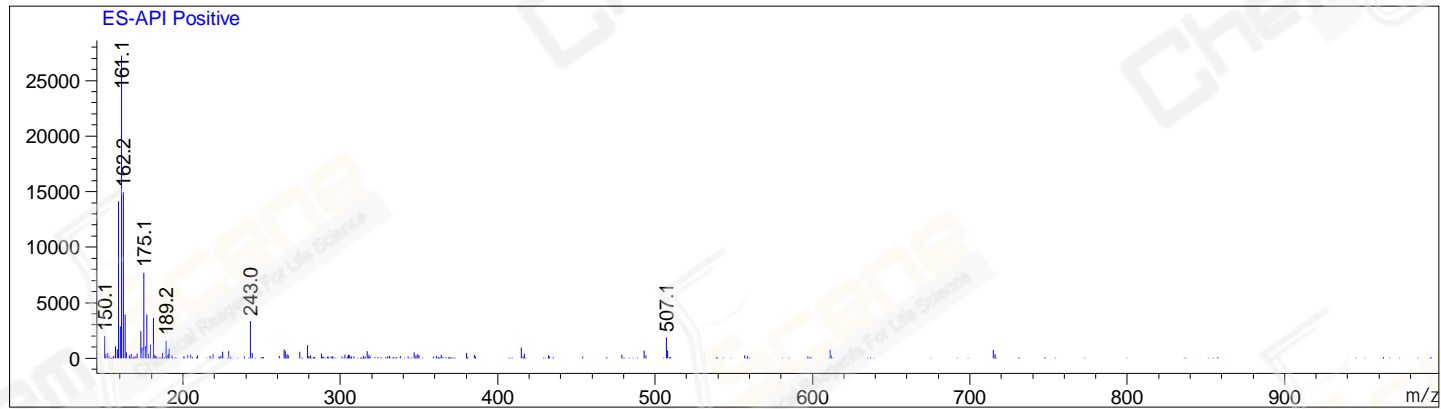
Integration Results for MSD1 TIC, MS File

RetTim	Width	Area	Height	Area%	MS (+)
0.87	0.06	971393.00	259638.50	95.29	479
1.02	0.06	48057.82	14357.93	4.71	161

Ret. Time: 0.87 <<<< POSITIVE SPECTRA >>>>



Ret. Time: 1.02



*** End of Report ***