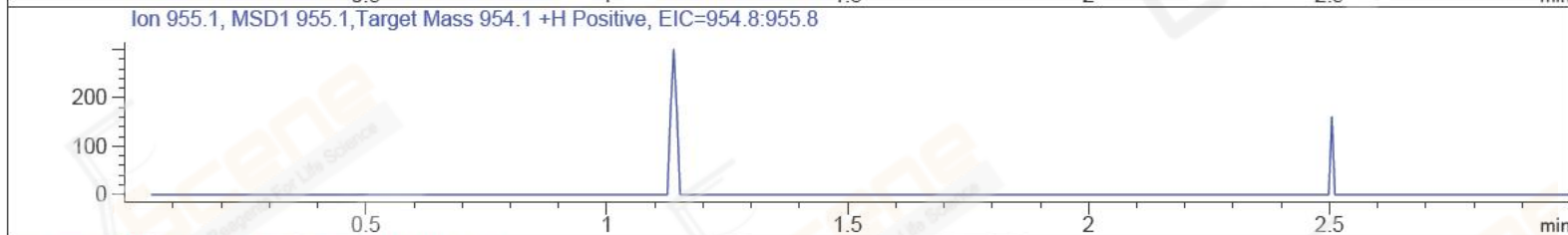
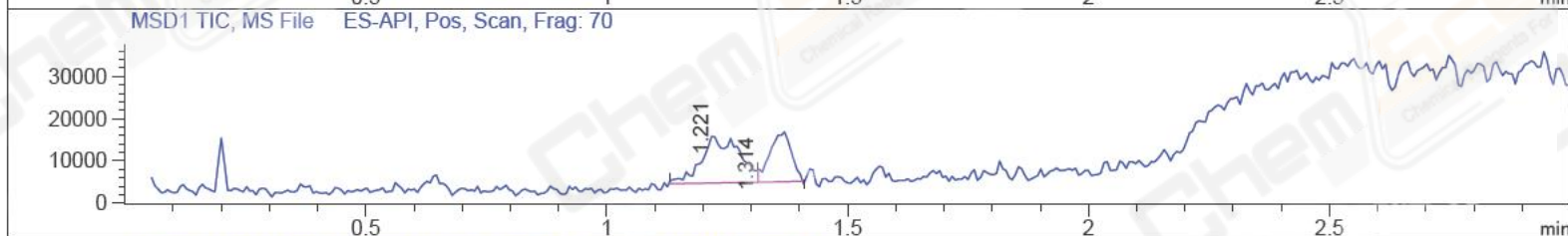
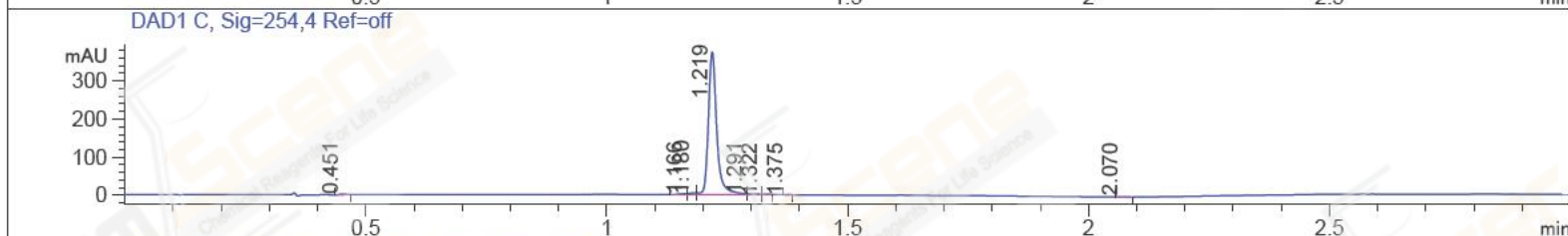
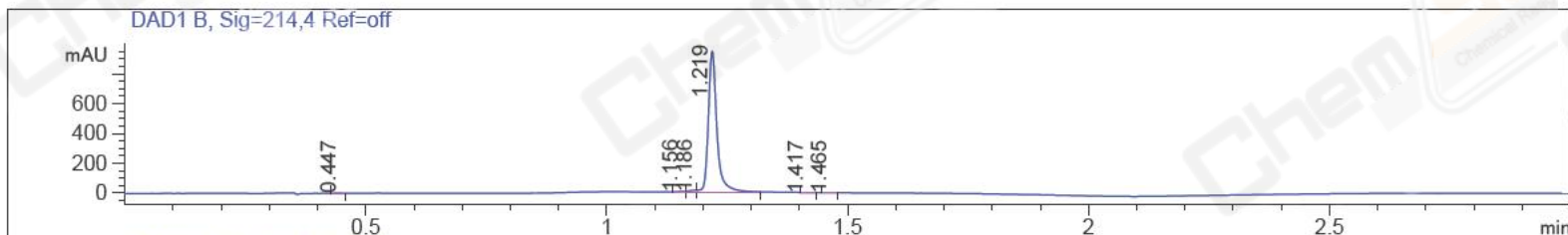


File ..0616 2017-06-16 10-55-32\BIZ2017-616-WYQ3.D Tgt Mass (CHM):
 Injection Date : 16 Jun 17 1:55 pm +0800 Seq. Line : 37
 Sample Name : BIZ2017-616-WYQ3 Location : P1-A-06
 Acq. Operator : CLJ_701 Inj : 1
 Spec. Reported : MS Integration Inj Volume : 1 ul
 Acq. Method : D:\chem32\1\DATA\20170616\20170616 2017-06-16 10-55-32\1-POS-3MIN.M
 Analysis Method : D:\CHEM32\1\DATA\20170616\20170616 2017-06-16 10-55-32\1-POS-3MIN.M
 Catalog No : CS-5820 Batch#24972 A-RP-186
 Method Info : Mobile Phase: A: water(0.01%TFA) B:ACN(0.01%TFA)
 Gradient: 5% to 95%B within 1.3 min
 Flow Rate :1.8ml/min
 Column :SunFire C18, 4.6*50mm,3.5um A-RP-186
 Oven Temperature : 45C



Integration Results for DAD1 B, Sig=214,4 Ref=off

RetTim	Width	Area	Height	Area%	MS (+)
0.45	0.02	1.66	1.72	0.14	ND
1.16	0.02	4.76	4.28	0.40	ND
1.19	0.02	10.66	10.26	0.90	305
1.22	0.02	1162.63	944.39	98.39	ND
1.42	0.02	0.44	0.42	0.04	ND
1.47	0.02	1.55	1.24	0.13	ND

Integration Results for DAD1 C, Sig=254,4 Ref=off

RetTim	Width	Area	Height	Area%	MS (+)
0.45	0.02	1.62	1.80	0.35	ND
1.17	0.18	3.09	2.83	0.66	ND
1.18	0.04	5.12	4.72	1.09	305
1.22	0.02	453.35	374.76	96.71	ND
1.29	0.04	3.61	2.52	0.77	ND
1.32	0.07	0.91	1.00	0.19	ND
1.37	0.46	0.14	0.20	0.03	ND
2.07	0.02	0.93	0.80	0.20	233

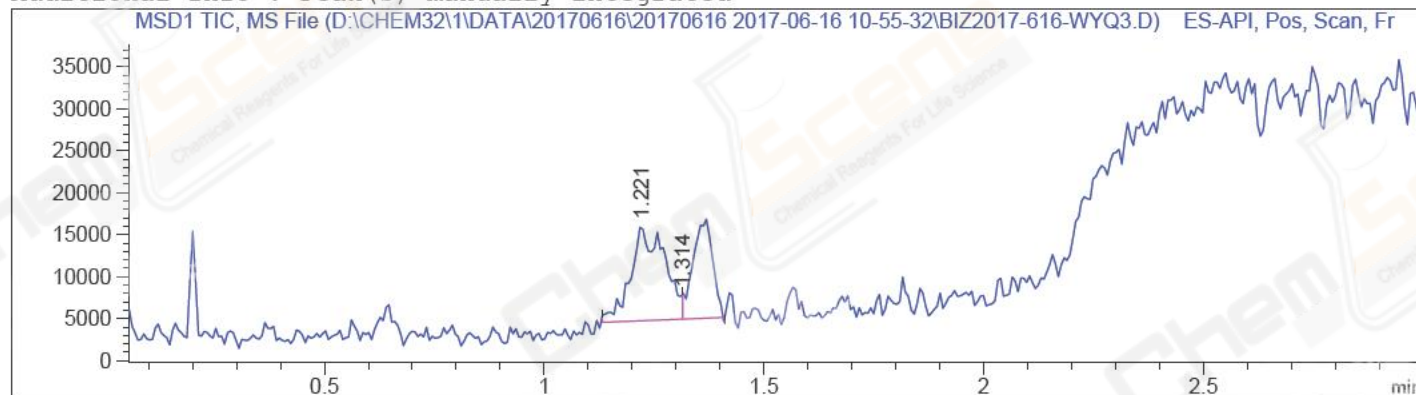
Integration Results for MSD1 TIC, MS File

RetTim	Width	Area	Height	Area%	MS(+)
1.22	0.09	60419.18	11457.88	62.21	ND
1.31	0.05	36698.14	2919.28	37.79	ND

=====

Acq. Operator	: CLJ_701	Seq. Line	: 37
Acq. Instrument	: LCMS-02	Location	: P1-A-06
Injection Date	: 6/16/2017 13:55:52	Inj	: 1
		Inj Volume	: 1.000 µl
Acq. Method	: D:\CHEM32\1\DATA\20170616\20170616 2017-06-16 10-55-32\1-POS-3MIN.M		
Last changed	: 6/16/2017 12:59:35 by CLJ_701		
Analysis Method	: D:\CHEM32\1\DATA\20170616\20170616 2017-06-16 10-55-32\1-POS-3MIN.M (Sequence Method)		
Last changed	: 6/16/2017 15:15:01 by CLJ_701 (modified after loading)		
Method Info	: Mobile Phase: A: water(0.01%TFA) B:ACN(0.01%TFA) Gradient: 5% to 95%B within 1.3 min Flow Rate :1.8ml/min Column :SunFire C18, 4.6*50mm,3.5um A-RP-186 Oven Temperature : 45C		
Catalog No	: CS-5820 Batch#24972 A-RP-186		

Additional Info : Peak(s) manually integrated



MS Signal: MSD1 TIC, MS File, ES-API, Pos, Scan, Frag: 70
Spectra averaged over upper half of peaks.
Noise Cutoff: 1000 counts.
Reportable Ion Abundance: > 10%.

Retention Time (MS)	MS Area	Mol. Weight or Ion
1.221	60419	388.25 I
1.314	36698	

