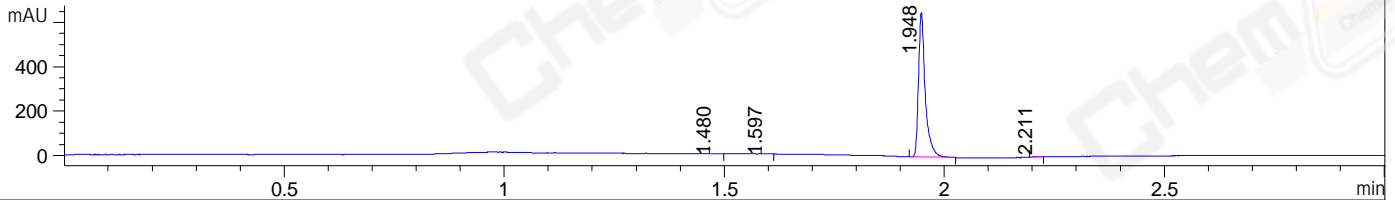
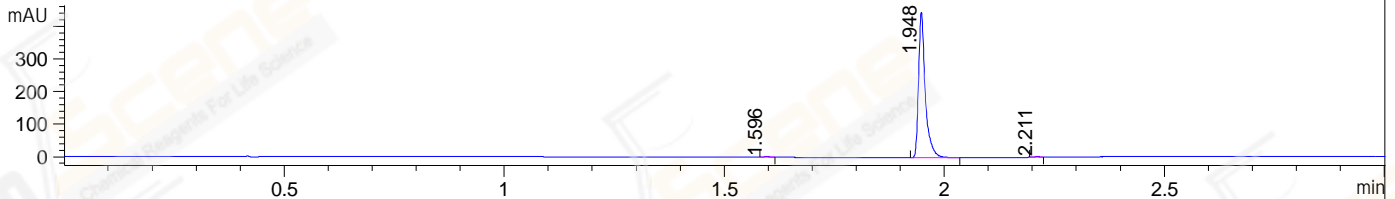


File ..DATA\2020\20200531\980\CPK2020-522-25046-.D Tgt Mass (CHM):
Injection Date : 31 May 20 5:38 pm +0800 Seq. Line : 103
Sample Name : CPK2020-522-25046 Location : P2-A-01
Acq. Operator : ZJ_1432 Inj : 1
Spec. Reported : MS Integration Inj Volume : 0.4 ul
Acq. Method : D:\Chem32\1\data\2020\20200531\980\1-POS-3MIN.M
Analysis Method : D:\CHEM32\1\DATA\2020\20200531\980\1-POS-3MIN.M
CAS NO. : 518-82-1
Method Info : Mobile Phase: A: water(0.01%TFA) B:ACN(0.01%TFA)
Gradient: 5% to 95%B within 1.3 min
Flow Rate :1.8ml/min
Column :SunFire C18, 4.6*50mm,3.5um A-RP-607
Oven Temperature : 45□

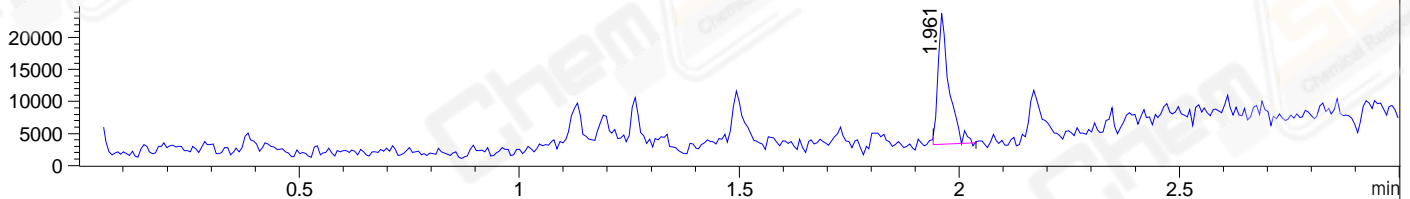
DAD1 B, Sig=214,4 Ref=off



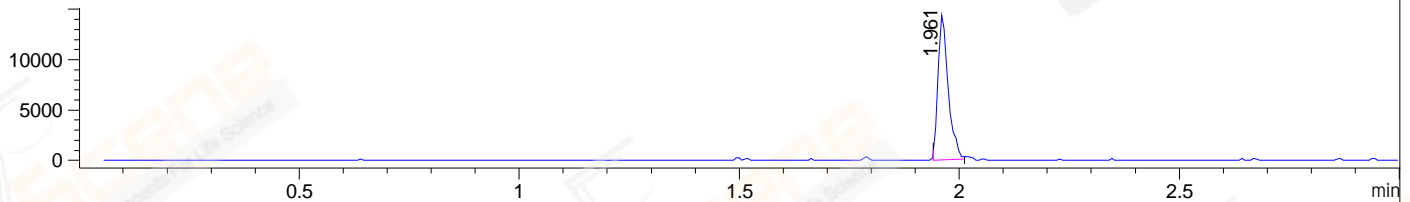
DAD1 C, Sig=254,4 Ref=off



MSD1 TIC, MS File ES-API, Pos, Scan, Frag: 70



Ion 271, MSD1 271, Target Mass 270 +H Positive, EIC=270.7:271.7



Integration Results for DAD1 B, Sig=214,4 Ref=off

RetTim	Width	Area	Height	Area%	MS(+)
1.48	0.01	1.02	1.17	0.15	214
1.60	0.01	1.47	2.15	0.21	ND
1.95	0.02	692.85	652.83	99.39	271
2.21	0.01	1.78	2.09	0.26	261

Integration Results for DAD1 C, Sig=254,4 Ref=off

RetTim	Width	Area	Height	Area%	MS(+)
1.60	0.02	1.69	1.81	0.35	ND
1.95	0.02	475.62	447.05	99.33	271
2.21	0.01	1.49	1.68	0.31	261

Integration Results for MSD1 TIC, MS File

RetTim	Width	Area	Height	Area%	MS(+)
1.96	0.03	35068.03	20640.31	100.00	271

Ret. Time: 1.96

<<<< POSITIVE SPECTRA >>>>

ES-API Positive

