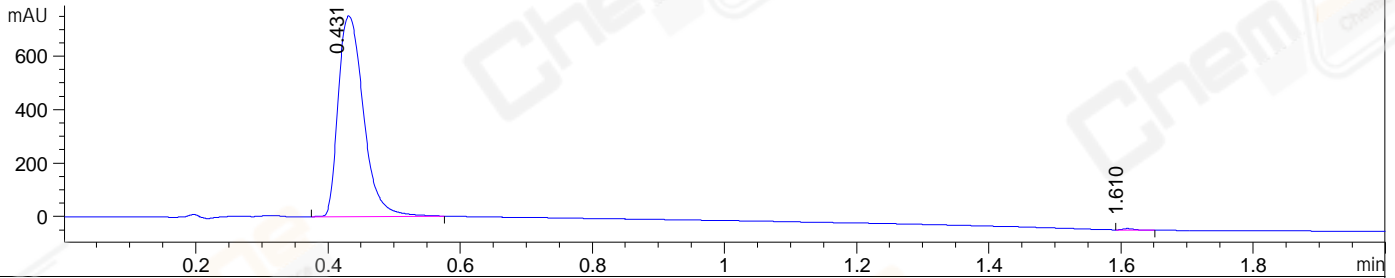
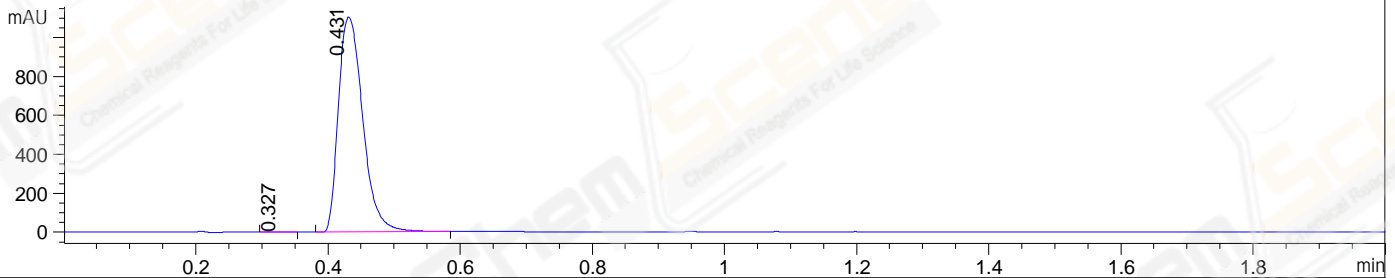


File ..7-05\CPK2023-703-250992-UPLC-MS-04-029299.D Tgt Mass (EZ):
 Injection Date : 05-Jul-23, 10:07:05 Seq. Line : 0
 Sample Name : CPK2023-703-250992 Location : P1-C-06
 Acq. Operator : LY_2278 Inj : 1
 Spec. Reported : MS Integration Inj Volume : 1 ul
 Acq. Method : E:\Chem32\1\Methods\1-POS-UPLC2.0MIN(0.8)(150-1000).M
 Analysis Method : E:\CHEM32\1\METHODS\1-POS-UPLC2.0MIN(0.8)(150-1000).M
 CAS NO. : 129830-38-2 WalkUp method: '1-POS-2MIN' Project: CPK2023
 Method Info : Mobile Phase: A: water(0.01%TFA) B:ACN(0.01%TFA)
 Gradient: 5% to 95%B within 1.3 min
 Flow Rate : 0.8ml/min
 Column : Poroshell 120 EC- C18, 2.1*50mm,1.9um
 Oven Temperature : 45C

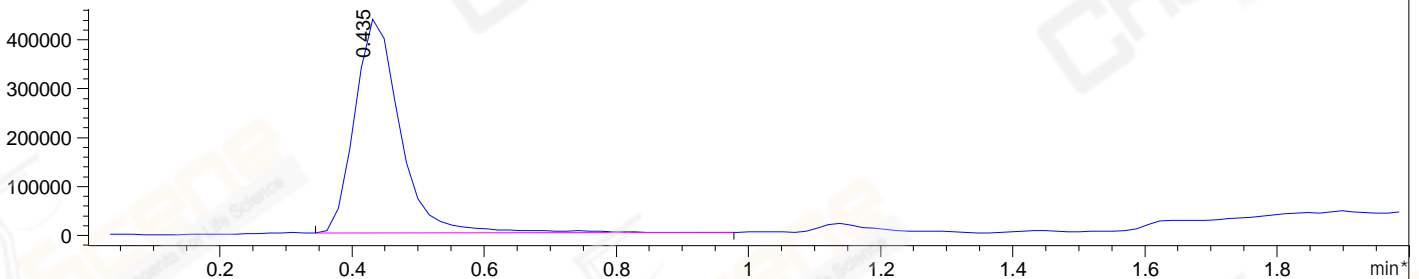
DAD1 A, Sig=214,4 Ref=off



DAD1 B, Sig=254,4 Ref=off



*MSD1 TIC, MS File ES-API, Pos, Scan, Frag: 70



Integration Results for DAD1 A, Sig=214,4 Ref=off

RetTim	Width	Area	Height	Area%	MS(+)
0.43	0.04	2000.19	751.04	99.69	248
1.61	0.02	6.28	5.48	0.31	159

Integration Results for DAD1 B, Sig=254,4 Ref=off

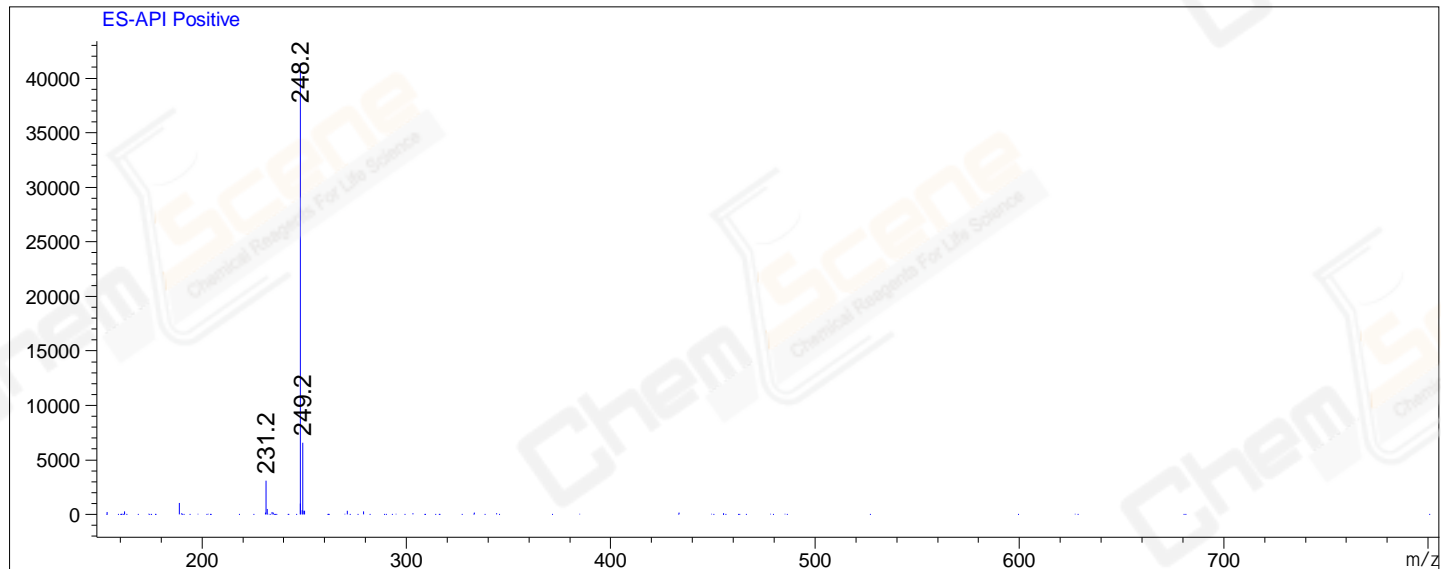
RetTim	Width	Area	Height	Area%	MS(+)
0.33	0.03	2.92	1.72	0.10	248
0.43	0.04	2829.63	1103.47	99.90	248

Integration Results for MSD1 TIC, MS File

RetTim	Width	Area	Height	Area%	MS(+)
0.43	0.07	2110160.25	440091.09	100.00	248

Ret. Time: 0.43

<<<< POSITIVE SPECTRA >>>>



*** End of Report ***