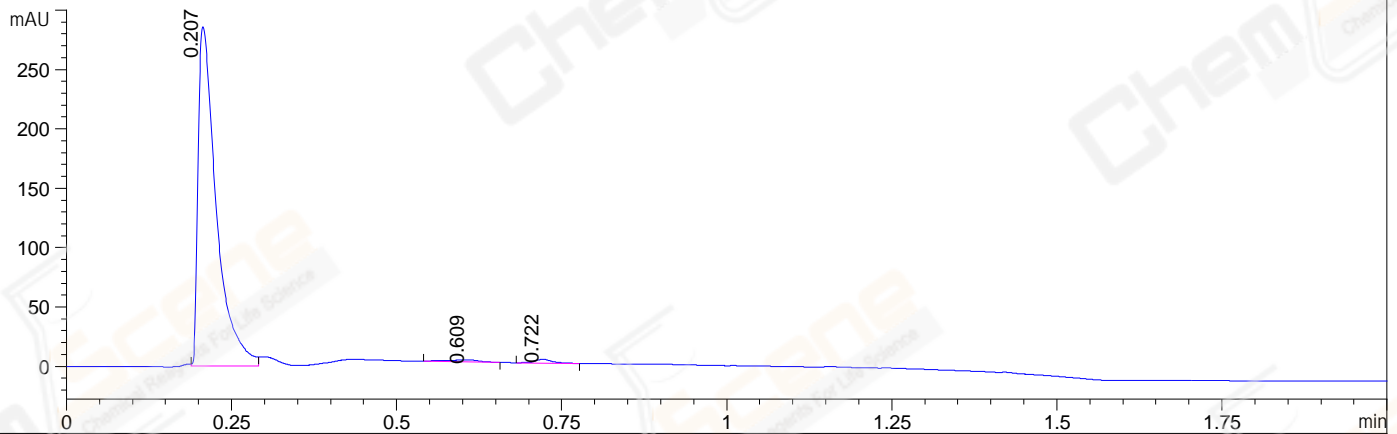
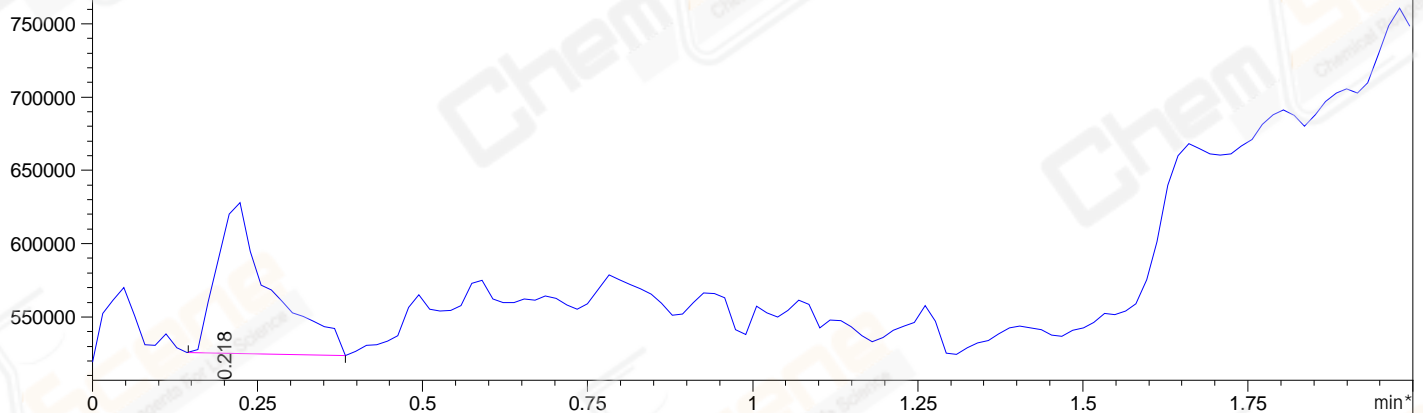


File ..17\BIZ2023-0215-WLQ15-1-UPLC-MS-04-013885.D Tgt Mass (EZ):  
 Injection Date : 17-Feb-23, 15:10:52 Seq. Line : 0  
 Sample Name : BIZ2023-0215-WLQ15-1 Location : P2-C-05  
 Acq. Operator : LY\_2278 Inj : 1  
 Spec. Reported : MS Integration Inj Volume : 0.2 ul  
 Acq. Method : E:\Chem32\1\METHODS\1-POS-UPLC2.0MIN(0.8)(60-1000).M  
 Analysis Method : E:\CHEM32\1\METHODS\1-POS-UPLC2.0MIN(0.8)(60-1000).M  
 CAS NO. : 1185166-01-1 WalkUp method: '1-POS-UPLC2.0MIN(0.8)(60-1000)' Project: BIZ2023  
 Method Info : Mobile Phase: A: water(0.01%TFA) B:ACN(0.01%TFA)  
 Gradient: 5% to 95%B within 1.3 min  
 Flow Rate : 0.8ml/min  
 Column : Poroshell 120 EC- C18, 2.1\*50mm,1.9um  
 Oven Temperature : 45C

DAD1 A, Sig=214,4 Ref=off



\*MSD1 TIC, MS File ES-API, Pos, Scan, Frag: 70



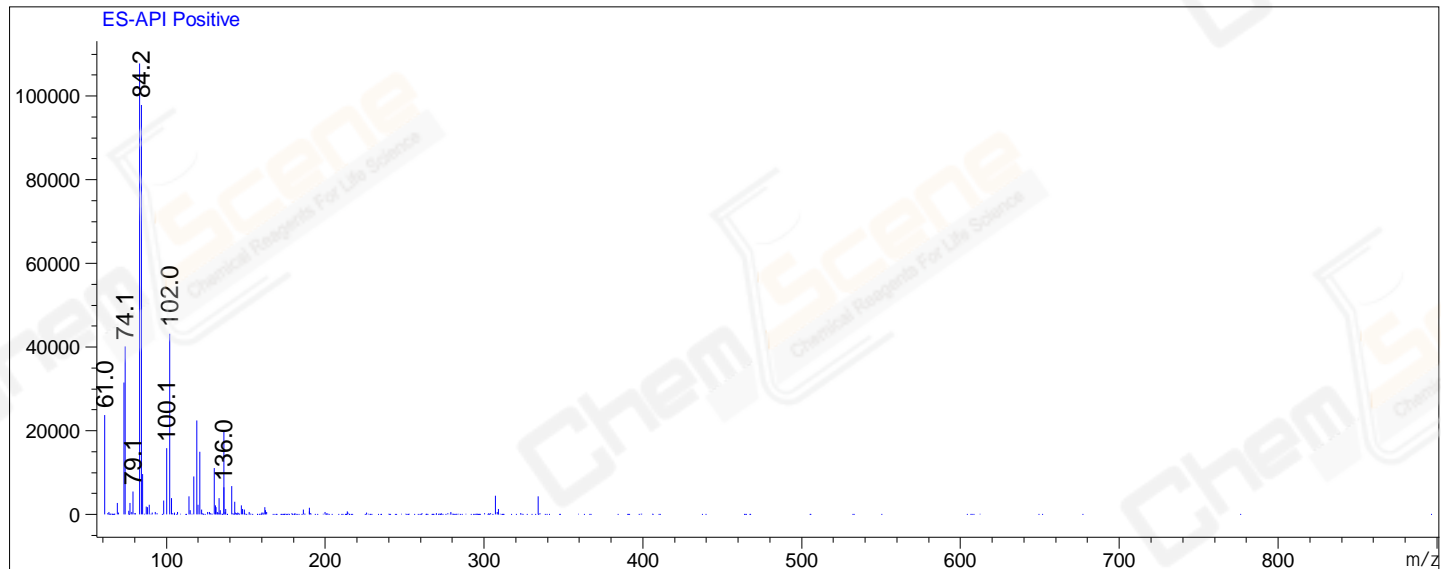
## Integration Results for DAD1 A, Sig=214,4 Ref=off

| RetTim | Width | Area   | Height | Area% | MS(+) |
|--------|-------|--------|--------|-------|-------|
| 0.21   | 0.03  | 548.99 | 286.34 | 98.04 | 83    |
| 0.61   | 0.06  | 5.68   | 1.68   | 1.01  | 83    |
| 0.72   | 0.03  | 5.30   | 3.04   | 0.95  | 83    |

## Integration Results for MSD1 TIC, MS File

| RetTim | Width | Area      | Height    | Area%  | MS(+) |
|--------|-------|-----------|-----------|--------|-------|
| 0.22   | 0.08  | 586180.81 | 104838.52 | 100.00 | 83    |

Ret. Time: 0.22 <<<< POSITIVE SPECTRA >>>>



\*\*\* End of Report \*\*\*