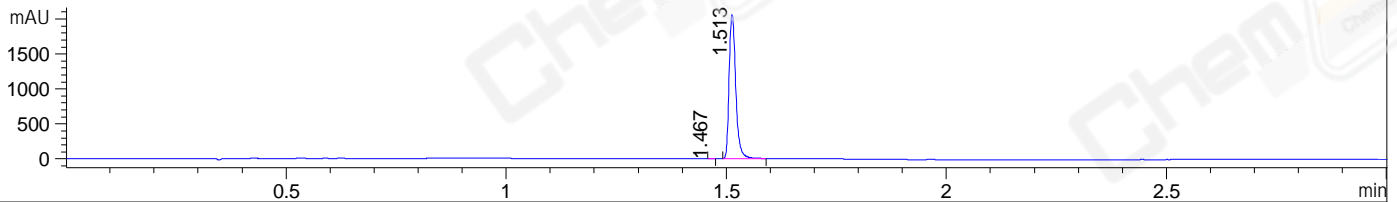
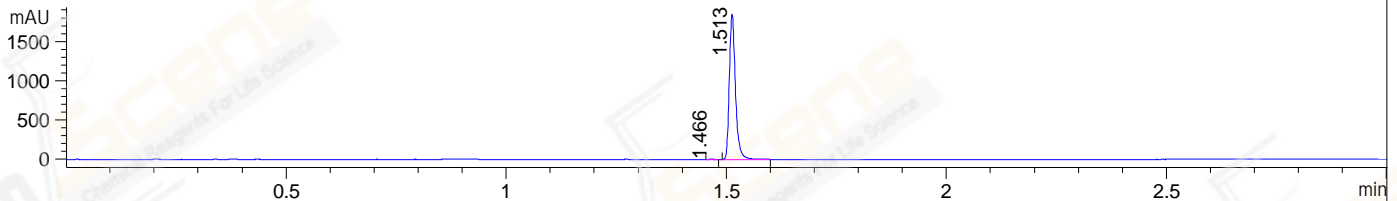


File ..DATA\2020\20201111\1150\CPK2020-N09-25288.D Tgt Mass (CHM):  
Injection Date : 11 Nov 20 9:11 pm +0800 Seq. Line : 145  
Sample Name : CPK2020-N09-25288 Location : P1-D-04  
Acq. Operator : zyj\_1547 Inj : 1  
Spec. Reported : MS Integration Inj Volume : 1 ul  
Acq. Method : D:\Chem32\1\data\2020\20201111\1150\1-POS-3MIN.M  
Analysis Method : D:\CHEM32\1\DATA\2020\20201111\1150\1-POS-3MIN.M  
CAS NO. : 1884712-47-3  
Method Info : Mobile Phase: A: water(0.01%TFA) B:ACN(0.01%TFA)  
Gradient: 5% to 95%B within 1.3 min  
Flow Rate :1.8ml/min  
Column :SunFire C18, 4.6\*50mm,3.5um A-RP-698

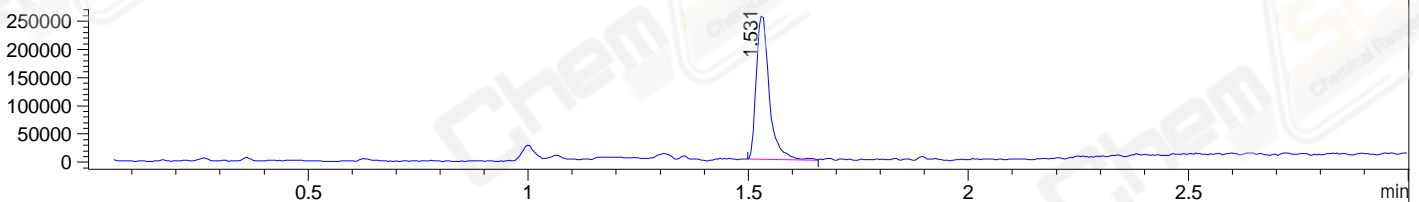
DAD1 B, Sig=214,4 Ref=off



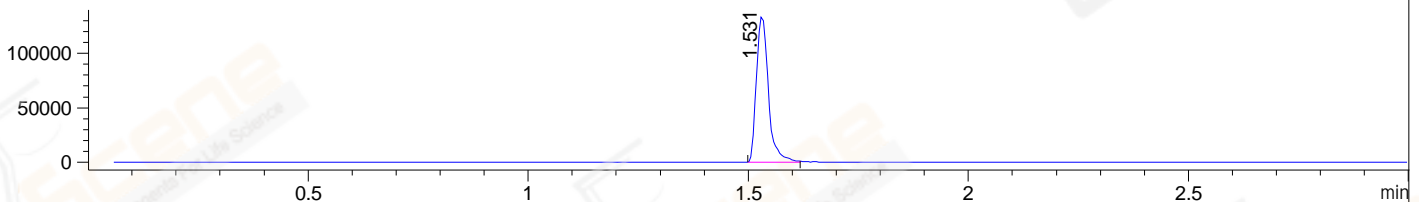
DAD1 C, Sig=254,4 Ref=off



MSD1 TIC, MS File ES-API, Pos, Scan, Frag: 70



Ion 387, MSD1 387, Target Mass 386 +H Positive, EIC=386.7:387.7



## Integration Results for DAD1 B, Sig=214,4 Ref=off

RetTim	Width	Area	Height	Area%	MS(+)
1.47	0.01	1.08	1.59	0.05	ND
1.51	0.02	2154.14	2060.16	99.95	387

## Integration Results for DAD1 C, Sig=254,4 Ref=off

RetTim	Width	Area	Height	Area%	MS(+)
1.47	0.01	1.56	1.96	0.09	ND
1.51	0.02	1784.81	1848.37	99.91	387

## Integration Results for MSD1 TIC, MS File

RetTim	Width	Area	Height	Area%	MS(+)
1.53	0.03	525426.31	255842.22	100.00	387

Ret. Time: 1.53

<<<< POSITIVE SPECTRA >>>>

ES-API Positive

