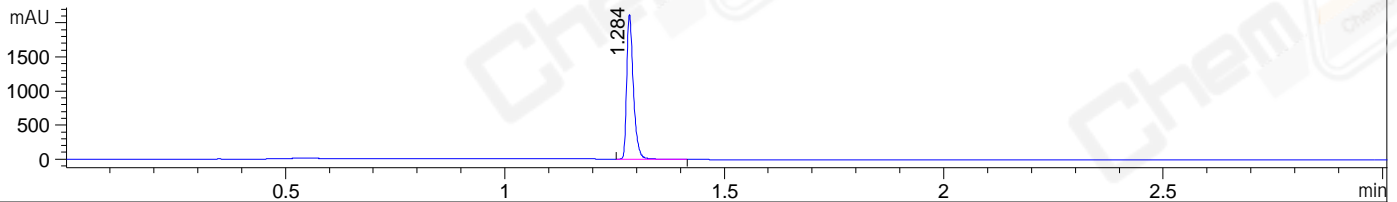
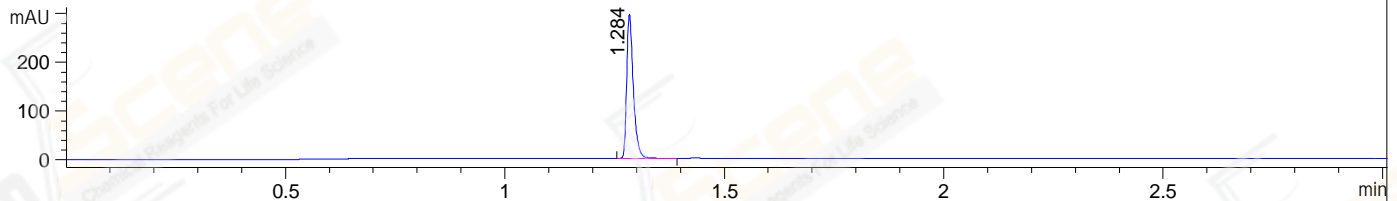


File ..-02-27\ZAD19467-53-P1B1-UPLC-MS-09-013418.D Tgt Mass (EZ):
Injection Date : 27-Feb-23, 13:28:13 Seq. Line : 0
Sample Name : ZAD19467-53-P1B1 Location : P1-A-09
Acq. Operator : admin Inj : 1
Spec. Reported : MS Integration Inj Volume : 0.2 ul
Acq. Method : D:\data\1\Methods\1-POS-3MIN(0.6min BQ) C1.M
Analysis Method : D:\data\1\Methods\1-POS-3MIN(0.6min BQ) C1.M
CAS NO. : 2173193-92-3 WalkUp method: '0.6MIN(BQ)'
Method Info : Mobile Phase: A: water(0.01%TFA) B:ACN(0.01%TFA)
Gradient: 5% to95%B within1.3 min
Flow Rate :1.8ml/min
Column :Shim-pack Scepter C18-120, 4.5*50mm,3um A-RP-1242
Oven Temperature : 45C

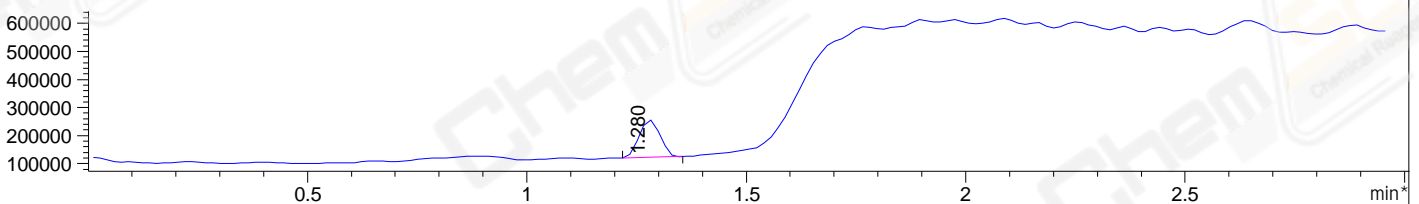
DAD1 A, Sig=214,4 Ref=off



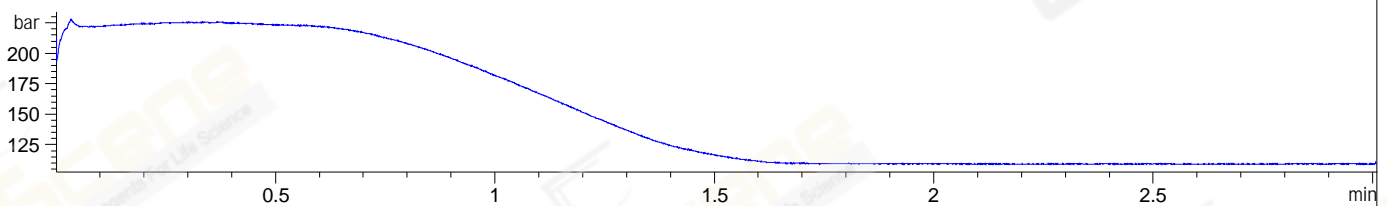
DAD1 B, Sig=254,4 Ref=off



*MSD1 TIC, MS File ES-API, Pos, Scan, Frag: 70



PMP1, PMP1B, Pressure



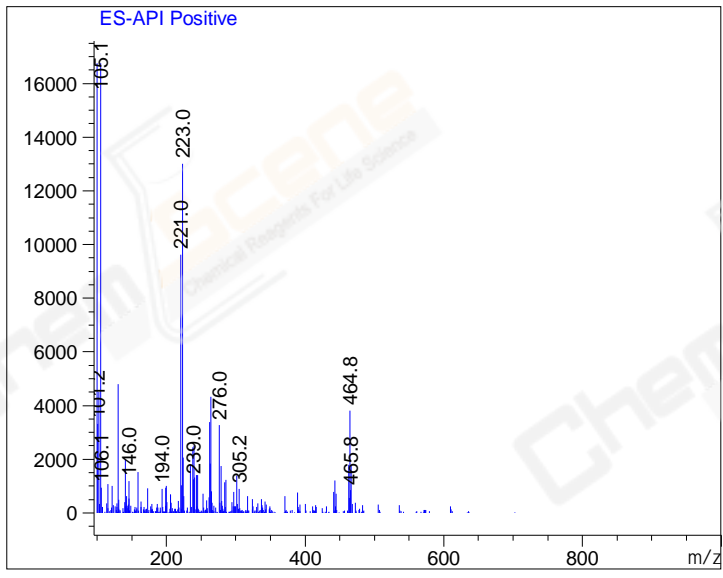
Integration Results for DAD1 A, Sig=214,4 Ref=off

RetTim	Width	Area	Height	Area%	MS(+)
1.28	0.02	2230.09	2114.50	100.00	105

Integration Results for DAD1 B, Sig=254,4 Ref=off

RetTim	Width	Area	Height	Area%	MS(+)
1.28	0.02	308.59	294.26	100.00	105

Ret. Time: 1.28 <<<< POSITIVE SPECTRA >>>>



*** End of Report ***