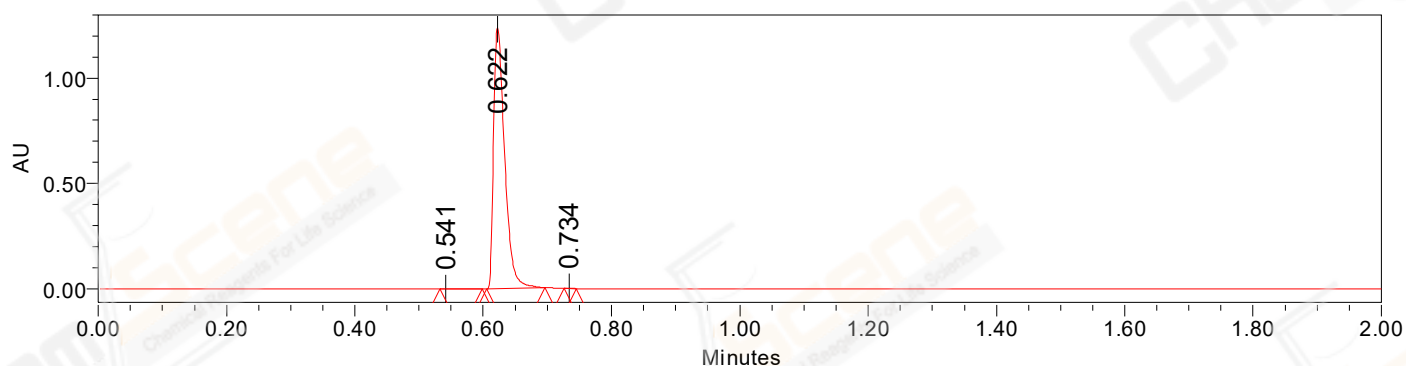


SAMPLE INFORMATION

CAS NO.: 1951483-29-6
Sample information:
Vial: 2:A,5
Injection #: 1
Injection Volume: 0.30 ul
Run Time: 2.8 Minutes
Sample Set Name: 20220927

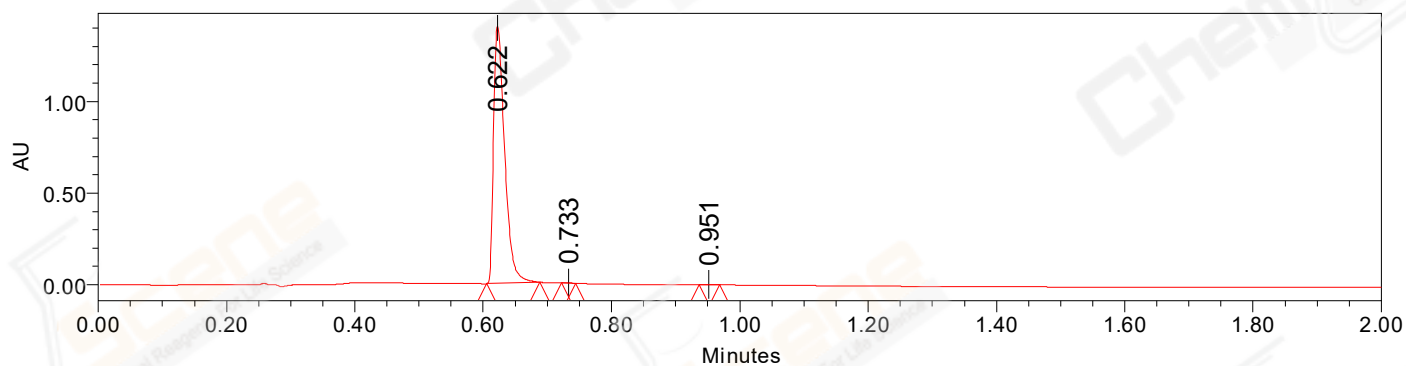
Acquired By: LY
Date Acquired: 9/27/2022 6:14:12 PM CST
Acq. Method Set: 1_POS_2MIN
Date Processed: 9/28/2022 2:51:43 PM CST,
Processing Method: PDA_01, MS_scan
Channel Name: PDA Ch1 214nm@4.8nm, MS TIC,
Column Name: A-RP-985

Auto-Scaled Chromatogram



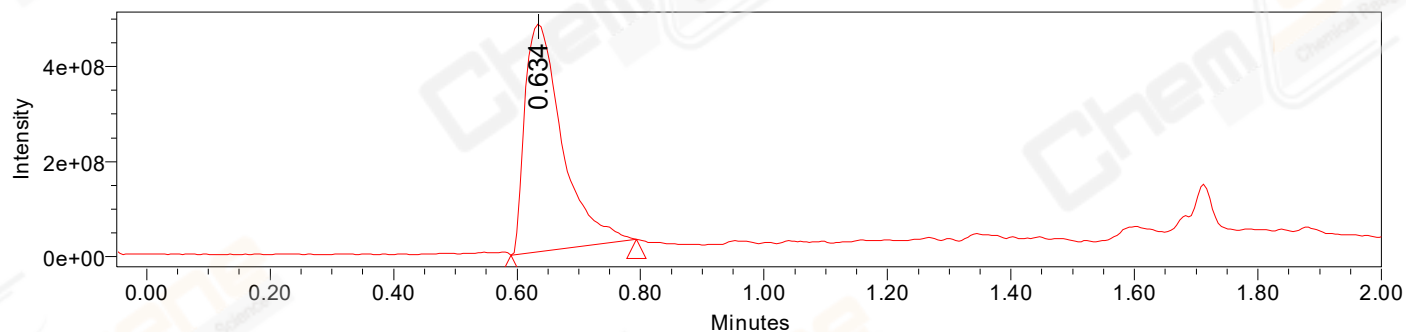
Processed Channel Descr. PDA Ch2 254nm@4.8nm

Auto-Scaled Chromatogram



Processed Channel Descr. PDA Ch1 214nm@4.8nm

Auto-Scaled Chromatogram



Processed Channel Descr. ACQ-SQD2 1: MS Scan MS TIC, Smoothed by 9 point Savitzky-Golay Filter., Time offset by -0.053 mins. (1: 150.00-1000.00 ES+, Centroid, CV=30)

Peak Results
Channel Name: PDA Ch2 254nm@4.8nm

	RT	Width (sec)	Area	Height	% Area	Base Peak (Combined) (m/z)	Channel Name
1	0.541	3.950	1080	472	0.0724	152.22	PDA Ch2 254nm@4.8nm
2	0.622	5.450	1488904	1236692	99.8645	151.98	PDA Ch2 254nm@4.8nm
3	0.734	1.150	941	1551	0.0631	151.91	PDA Ch2 254nm@4.8nm

Peak Results
Channel Name: PDA Ch1 214nm@4.8nm

	RT	Width (sec)	Area	Height	% Area	Base Peak (Combined) (m/z)	Channel Name
1	0.622	4.950	1687464	1403730	99.8817	151.98	PDA Ch1 214nm@4.8nm
2	0.733	1.350	988	1619	0.0585	151.87	PDA Ch1 214nm@4.8nm
3	0.951	1.900	1010	1050	0.0598	152.02	PDA Ch1 214nm@4.8nm

Peak Results
Channel Name: MS TIC

	RT	Width (sec)	Area	Height	% Area	Base Peak (Combined) (m/z)	Channel Name
1	0.634	12.186	2011623332	478694380	100.0000	227.81	MS TIC

Match Plot

