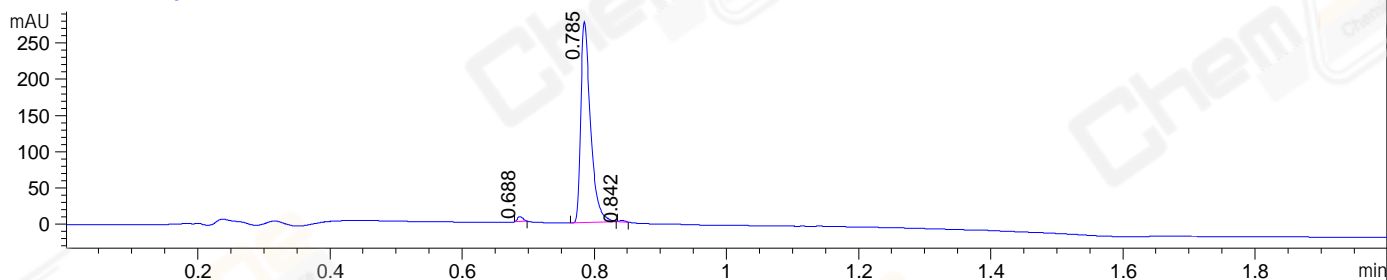
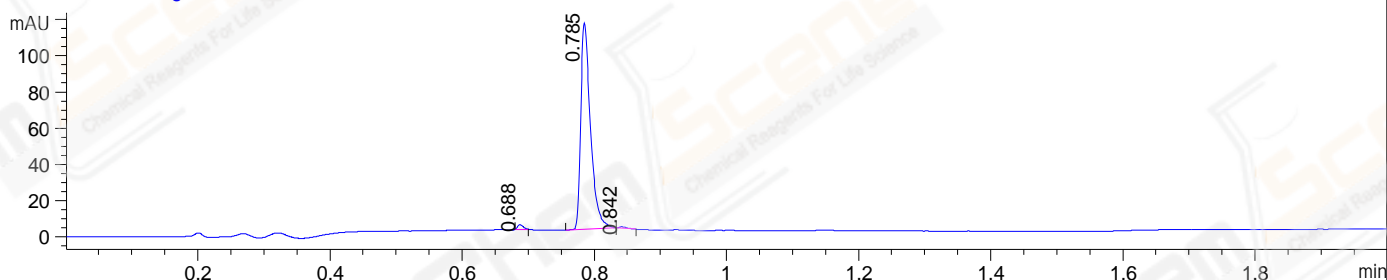


File ..3-02-20\ZSS18909-001-10-UPLC-MS-05-022918.D Tgt Mass (EZX):
 Injection Date : 20-Feb-23, 18:52:07 Seq. Line : 0
 Sample Name : ZSS18909-001-10 Location : P2-F-09
 Acq. Operator : LY_2287 Inj : 1
 Spec. Reported : MS Integration Inj Volume : 0.2 ul
 Acq. Method : D:\methods\1-POS-UPLC2.0MIN-(0.8)(150-1000).M
 Analysis Method : D:\METHODS\1-POS-UPLC2.0MIN-(0.8)(150-1000).M
 CAS NO. : 1234015-52-1 WalkUp method: '1-POS-2MIN' Project: LD1656
 Method Info : Mobile Phase: A: water(0.01%TFA) B:ACN(0.01%TFA)
 Gradient: 5% to 95%B within 1.3 min
 Flow Rate : 0.8ml/min
 Column :Poroshell 120 EC- C18, 2.1*50mm,1.9um A-RP-750
 Oven Temperature : 45C

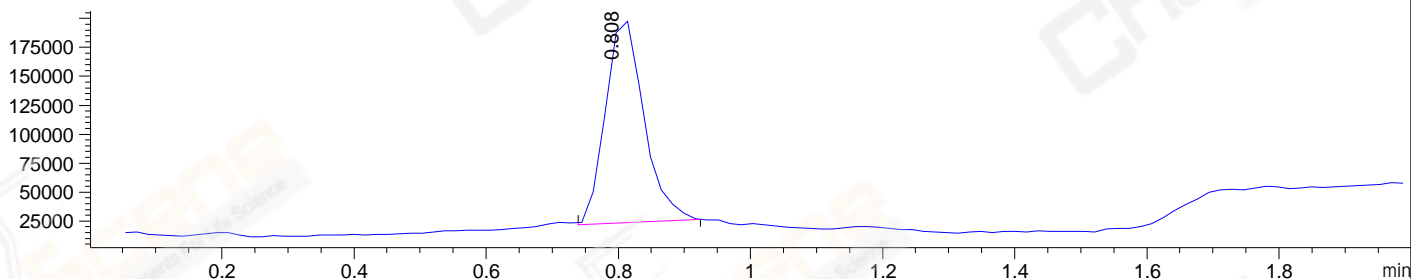
DAD1 A, Sig=214,4 Ref=off



DAD1 B, Sig=254,4 Ref=off



MSD1 TIC, MS File ES-API, Pos, Scan, Frag: 70



Integration Results for DAD1 A, Sig=214,4 Ref=off

RetTim	Width	Area	Height	Area%	MS (+)
0.69	0.01	3.82	6.71	1.32	ND
0.79	0.02	284.34	276.54	98.35	366
0.84	0.01	0.96	1.72	0.33	366

Integration Results for DAD1 B, Sig=254,4 Ref=off

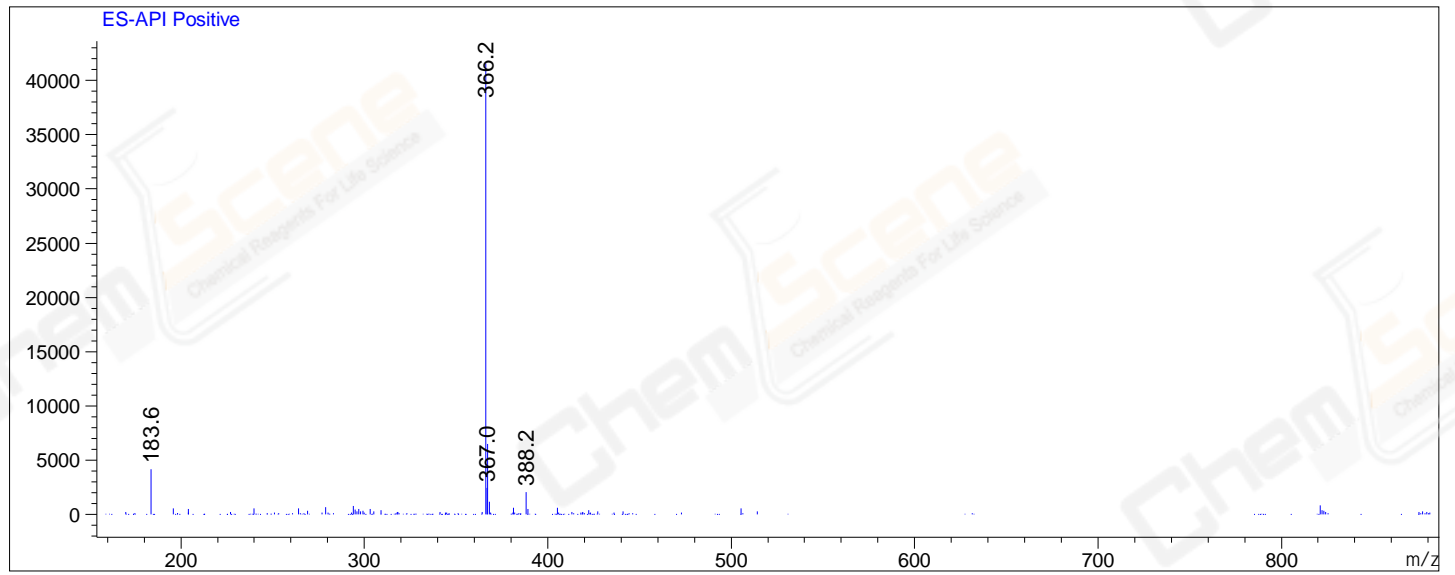
RetTim	Width	Area	Height	Area%	MS (+)
0.69	0.01	1.63	2.63	1.36	ND
0.79	0.02	117.17	113.90	98.14	366
0.84	0.01	0.59	0.80	0.49	366

Integration Results for MSD1 TIC, MS File

RetTim	Width	Area	Height	Area%	MS (+)
0.81	0.07	707198.63	180769.25	100.00	366

Ret. Time: 0.81

<<<< POSITIVE SPECTRA >>>>



*** End of Report ***