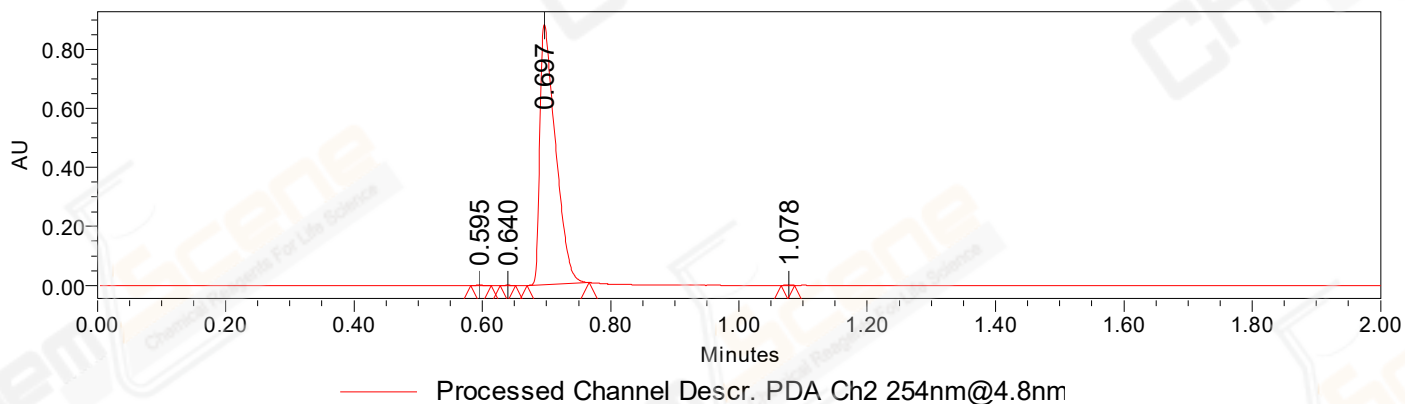


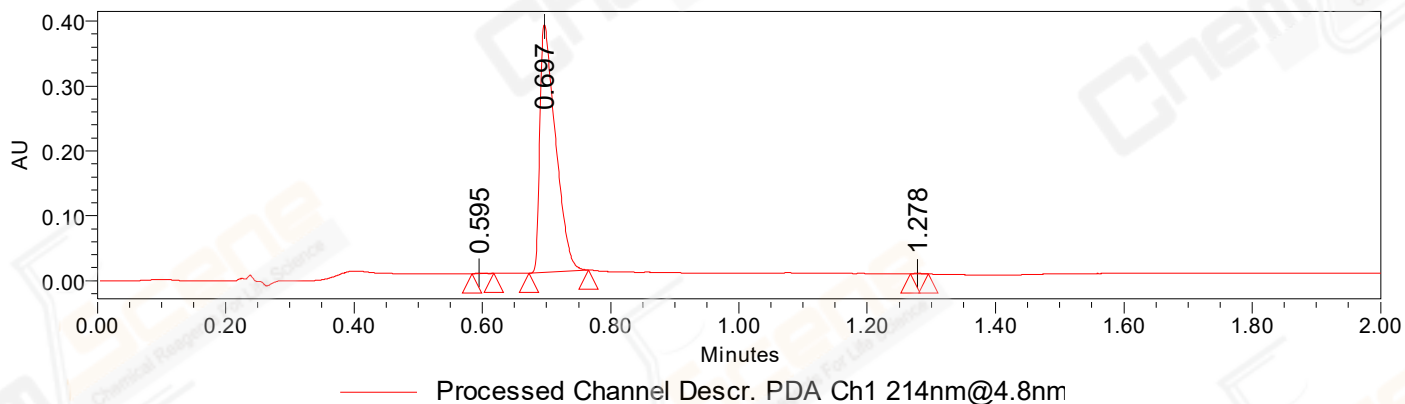
## SAMPLE INFORMATION

CAS NO.:	65-61-2	Acquired By:	LY
Sample information:		Date Acquired:	12/7/2022 5:43:50 PM CST
Vial:	2:B,8	Acq. Method Set:	1_POS_2MIN
Injection #:	1	Date Processed:	12/8/2022 9:51:24 AM CST,
Injection Volume:	0.30 ul	Processing Method:	PDA_01, MS_scan
Run Time:	2.8 Minutes	Channel Name:	PDA Ch1 214nm@4.8nm, MS TIC,
Sample Set Name:	20221207	Column Name:	A-RP-985

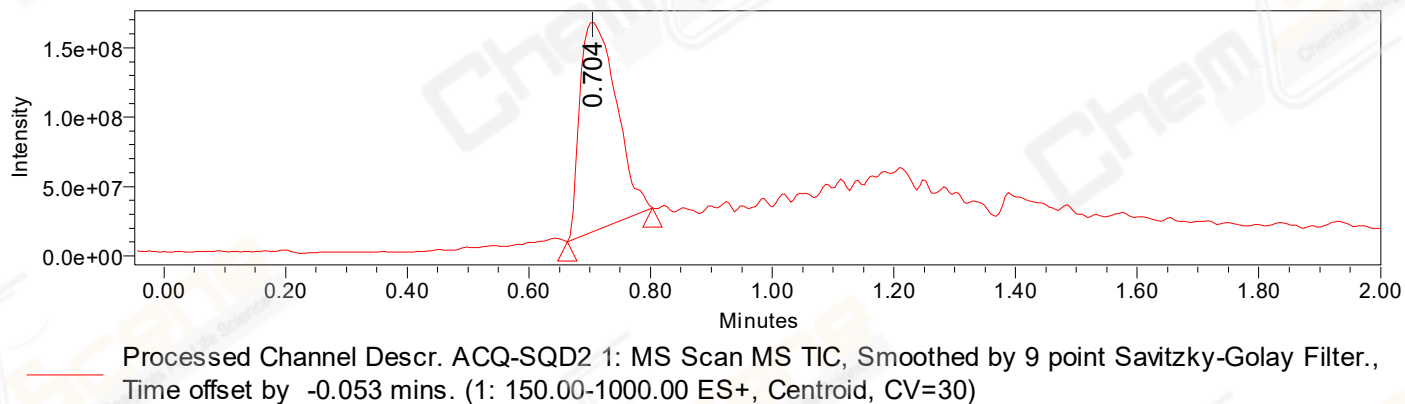
### Auto-Scaled Chromatogram



### Auto-Scaled Chromatogram



### Auto-Scaled Chromatogram



Peak Results  
Channel Name: PDA Ch2 254nm@4.8nm

	RT	Width (sec)	Area	Height	% Area	Base Peak (Combined) (m/z)	Channel Name
1	0.595	1.950	1588	2343	0.11	153.02	PDA Ch2 254nm@4.8nm
2	0.640	1.450	836	1342	0.06	152.10	PDA Ch2 254nm@4.8nm
3	0.697	5.800	1494808	881034	99.80	151.94	PDA Ch2 254nm@4.8nm
4	1.078	1.250	544	928	0.04	153.06	PDA Ch2 254nm@4.8nm

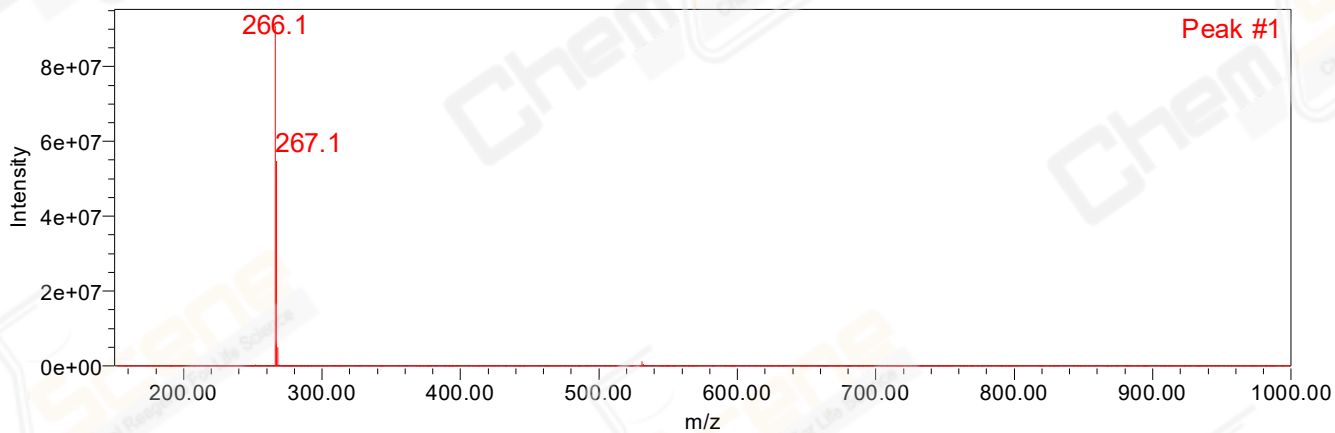
Peak Results  
Channel Name: PDA Ch1 214nm@4.8nm

	RT	Width (sec)	Area	Height	% Area	Base Peak (Combined) (m/z)	Channel Name
1	0.595	2.000	684	1015	0.11	151.07	PDA Ch1 214nm@4.8nm
2	0.697	5.550	647493	381711	99.77	151.94	PDA Ch1 214nm@4.8nm
3	1.278	1.650	832	1109	0.13	152.94	PDA Ch1 214nm@4.8nm

Peak Results  
Channel Name: MS TIC

	RT	Width (sec)	Area	Height	% Area	Base Peak (Combined) (m/z)	Channel Name
1	0.704	8.414	625131061	151632114	100.00	266.11	MS TIC

Match Plot



Retention Time 0.704 Channel Name MS TIC