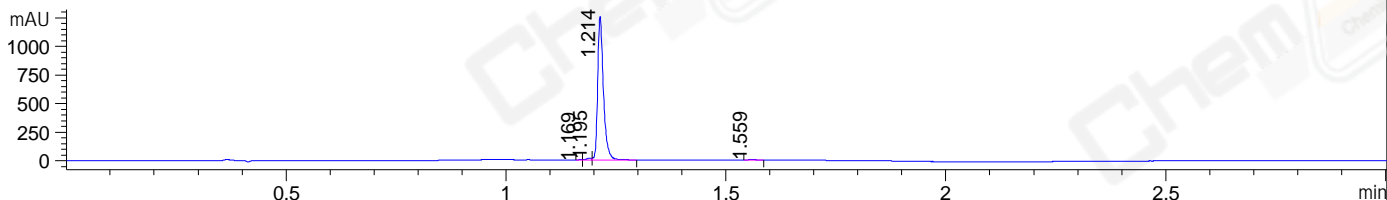
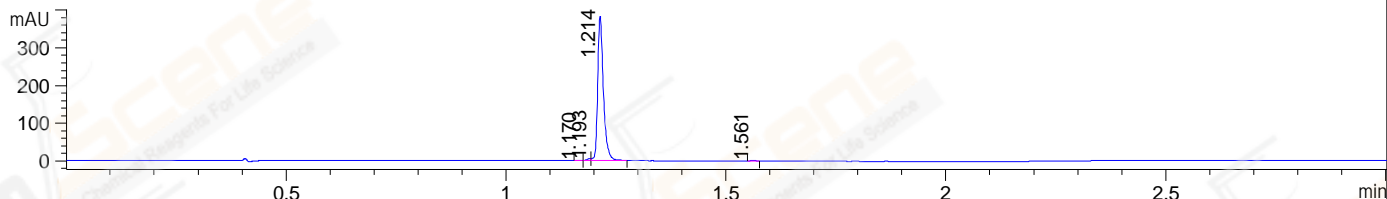


File ..\DATA\2020\20200507\948\CPK2020-430-25820.D Tgt Mass (CHM):
 Injection Date : 7 May 20 1:37 pm +0800 Seq. Line : 30
 Sample Name : CPK2020-430-25820 Location : P1-E-07
 Acq. Operator : ZJ_1432 Inj : 1
 Spec. Reported : MS Integration Inj Volume : 1 ul
 Acq. Method : D:\Chem32\1\data\2020\20200507\948\1-POS-3MIN.M
 Analysis Method : D:\CHEM32\1\DATA\2020\20200507\948\1-POS-3MIN.M
 Product Name: YKL-5-124 (TFA)
 Method Info : Mobile Phase: A: water(0.01%TFA) B:ACN(0.01%TFA)
 Gradient: 5% to 95%B within 1.3 min
 Flow Rate :1.8ml/min
 Column :SunFire C18, 4.6*50mm,3.5um A-RP-607
 Oven Temperature : 45□

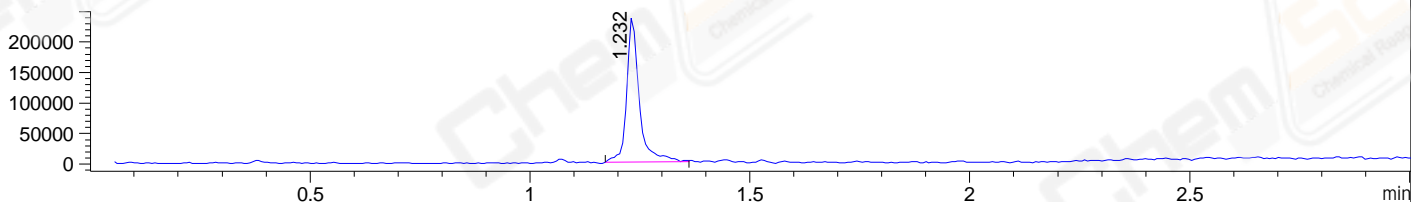
DAD1 B, Sig=214,4 Ref=off



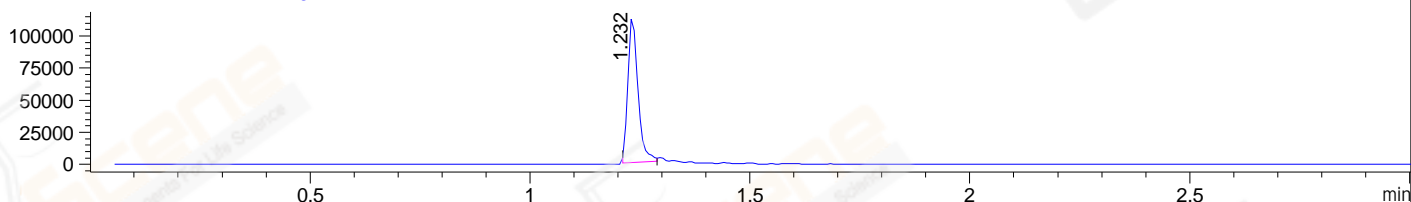
DAD1 C, Sig=254,4 Ref=off



MSD1 TIC, MS File ES-API, Pos, Scan, Frag: 70



Ion 516, MSD1 516, Target Mass 515 +H Positive, EIC=515.7:516.7



Integration Results for DAD1 B, Sig=214,4 Ref=off

RetTim	Width	Area	Height	Area%	MS(+)
1.17	0.01	1.75	2.42	0.15	ND
1.20	0.01	13.61	16.84	1.17	462
1.21	0.02	1137.07	1258.13	98.02	516
1.56	0.02	7.63	7.30	0.66	ND

Integration Results for DAD1 C, Sig=254,4 Ref=off

RetTim	Width	Area	Height	Area%	MS(+)
1.17	0.01	0.52	0.71	0.15	ND
1.19	0.01	3.30	5.21	0.95	462
1.21	0.01	343.37	384.43	98.59	516
1.56	0.01	1.10	1.58	0.32	ND

Integration Results for MSD1 TIC, MS File

RetTim	Width	Area	Height	Area%	MS(+)
1.23	0.03	479972.63	237988.72	100.00	516

Ret. Time: 1.23

<<<< POSITIVE SPECTRA >>>>

ES-API Positive

