

File ..04-07\BIZ2023-406-SCH42-UPLC-MS-01-015325.D Tgt Mass (EZX):

Injection Date : 7 Apr 23 12:29 pm +0800 Seq. Line : 0

Sample Name : BIZ2023-406-SCH42 Location : P1-E-10

Acq. Operator : LY\_2278 Inj : 1

Spec. Reported : MS Integration Inj Volume : 0.5 ul

Acq. Method : D:\LCMS\Methods\1-POS-UPLC2.0MIN(0.8ML)-(150-1000).M

Analysis Method : D:\LCMS\METHODS\1-POS-UPLC2.0MIN(0.8ML)-(150-1000).M

CAS NO. : 52-39-1 Walkup method: '1-POS-2MIN' Project: BIZ2023 Target:

Method Info : Mobile Phase: A: water(0.01%TFA) B:ACN(0.01%TFA)

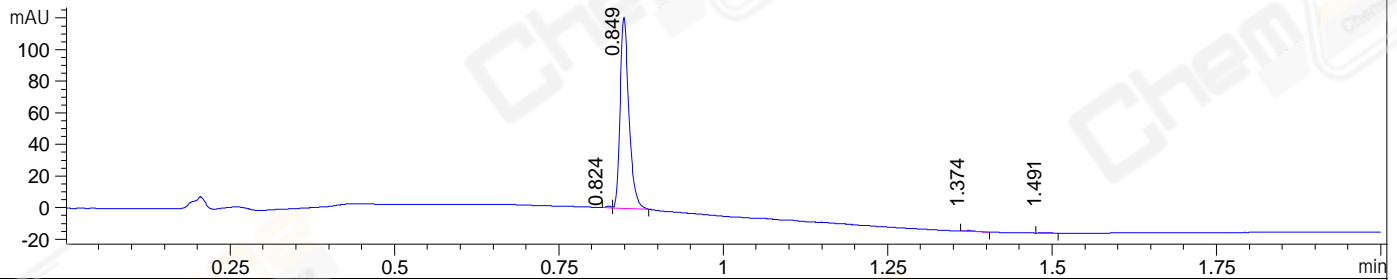
Gradient: 5% to 95%B within 0.6 min

Flow Rate : 0.8ml/min

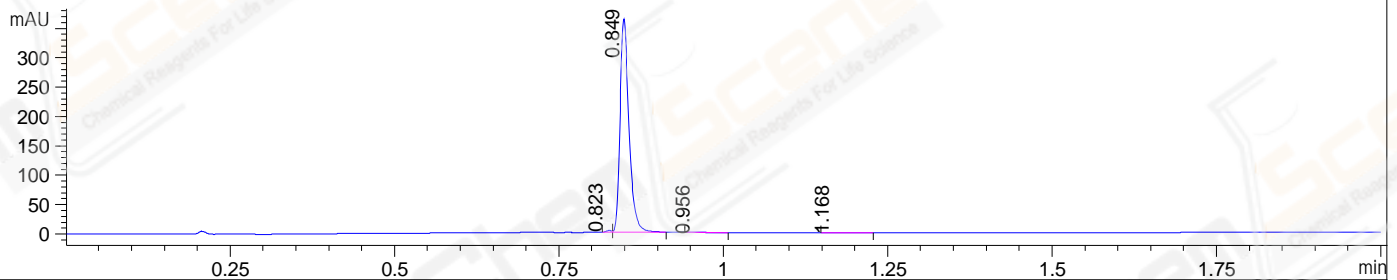
Column : Poroshell 120 EC- C18, 2.1\*50mm,1.9um A-RP-517

Oven Temperature : 45C

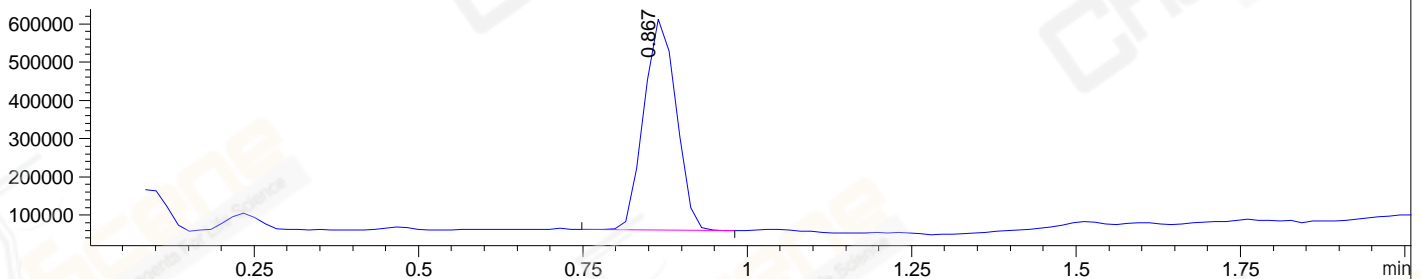
DAD1 A, Sig=214,4 Ref=off



DAD1 B, Sig=254,4 Ref=off



MSD1 TIC, MS File ES-API, Pos, Scan, Frag: 70



## Integration Results for DAD1 A, Sig=214,4 Ref=off

RetTim	Width	Area	Height	Area%	MS (+)
0.82	0.01	0.58	0.97	0.51	743
0.85	0.02	112.78	120.88	98.93	161
1.37	0.02	0.51	0.50	0.45	161
1.49	0.01	0.13	0.14	0.12	161

## Integration Results for DAD1 B, Sig=254,4 Ref=off

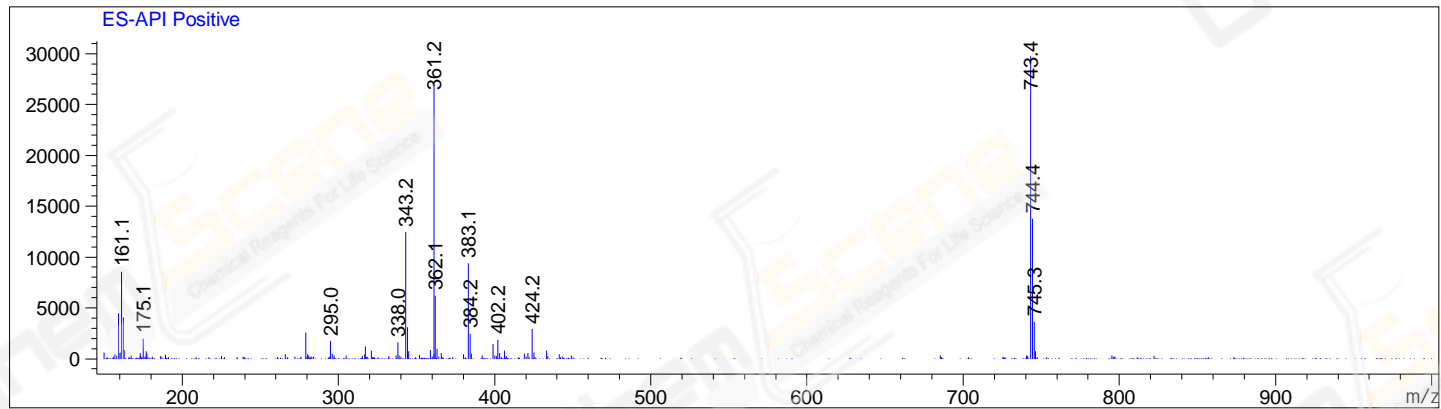
RetTim	Width	Area	Height	Area%	MS (+)
0.82	0.01	1.90	3.21	0.55	743
0.85	0.02	343.69	363.95	99.27	161
0.96	0.02	0.38	0.31	0.11	161
1.17	0.03	0.24	0.09	0.07	161

## Integration Results for MSD1 TIC, MS File

RetTim	Width	Area	Height	Area%	MS (+)
0.87	0.06	1901942.50	553552.63	100.00	743

Ret. Time: 0.87

<<<< POSITIVE SPECTRA >>>>



\*\*\* End of Report \*\*\*