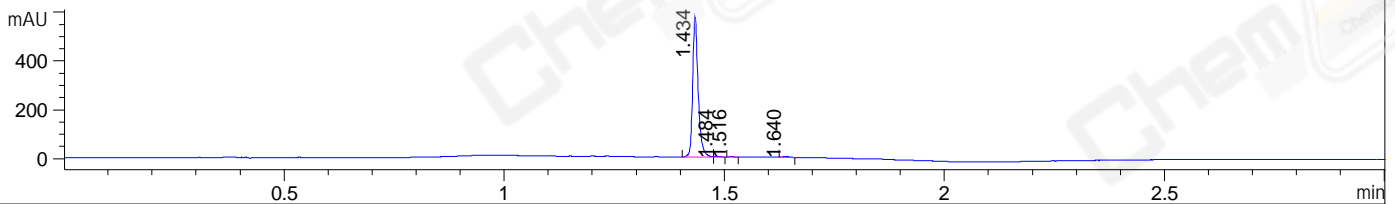
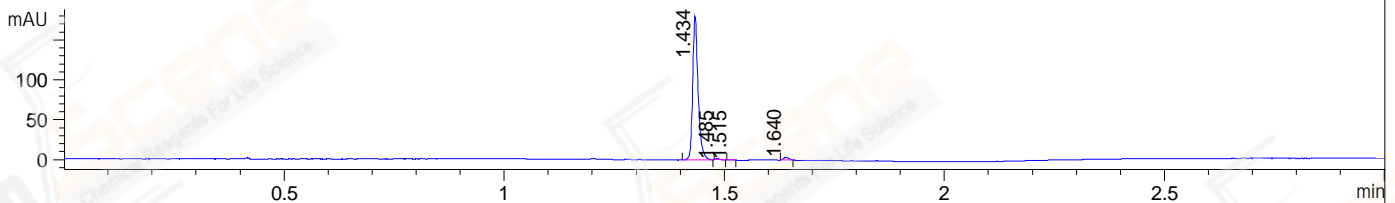


File ..DATA\2020\20200514\959\CPK2020-512-26164-.D Tgt Mass (CHM):
 Injection Date : 14 May 20 2:34 pm +0800 Seq. Line : 64
 Sample Name : CPK2020-512-26164 Location : P1-B-05
 Acq. Operator : ZJ_1432 Inj : 1
 Spec. Reported : MS Integration Inj Volume : 0.3 ul
 Acq. Method : D:\Chem32\1\data\2020\20200514\959\1-POS-3MIN.M
 Analysis Method : D:\CHEM32\1\DATA\2020\20200514\959\1-POS-3MIN.M
 Catalog No : CS-7663
 Method Info : Mobile Phase: A: water(0.01%TFA) B:ACN(0.01%TFA)
 Gradient: 5% to 95%B within 1.3 min
 Flow Rate :1.8ml/min
 Column :SunFire C18, 4.6*50mm,3.5um A-RP-607
 Oven Temperature : 45□

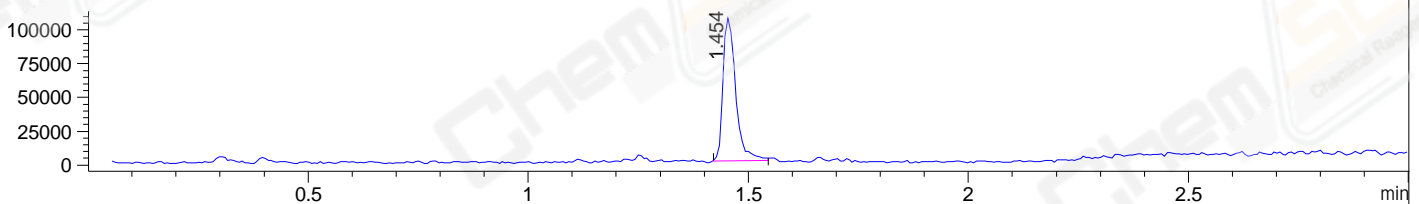
DAD1 B, Sig=214,4 Ref=off



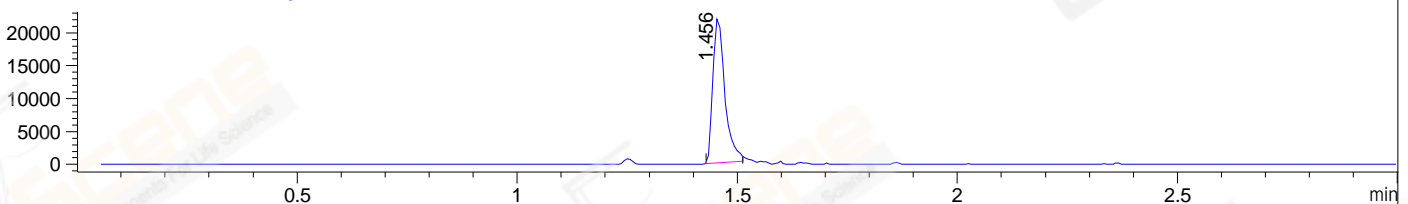
DAD1 C, Sig=254,4 Ref=off



MSD1 TIC, MS File ES-API, Pos, Scan, Frag: 70



Ion 485, MSD1 485, Target Mass 484 +H Positive, EIC=484.7:485.7



Integration Results for DAD1 B, Sig=214,4 Ref=off

RetTim	Width	Area	Height	Area%	MS (+)
1.43	0.01	496.27	575.34	98.60	243
1.48	0.01	2.02	2.39	0.40	485
1.52	0.01	1.11	1.42	0.22	ND
1.64	0.01	3.92	4.19	0.78	130

Integration Results for DAD1 C, Sig=254,4 Ref=off

RetTim	Width	Area	Height	Area%	MS (+)
1.43	0.01	153.85	180.17	98.04	243
1.48	0.01	0.79	1.32	0.50	485
1.52	0.01	0.25	0.48	0.16	ND
1.64	0.01	2.04	2.94	1.30	130

Integration Results for MSD1 TIC, MS File

RetTim	Width	Area	Height	Area%	MS (+)
1.45	0.03	210839.70	105573.05	100.00	243

Ret. Time: 1.45

<<<< POSITIVE SPECTRA >>>>

