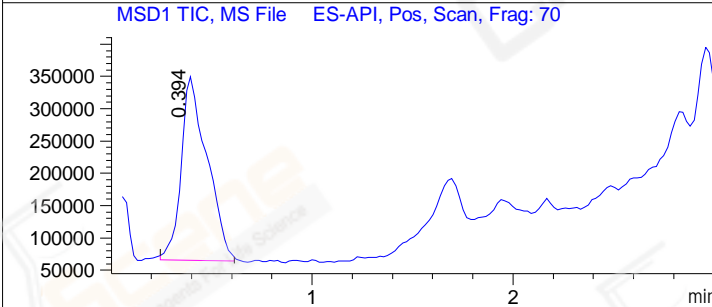
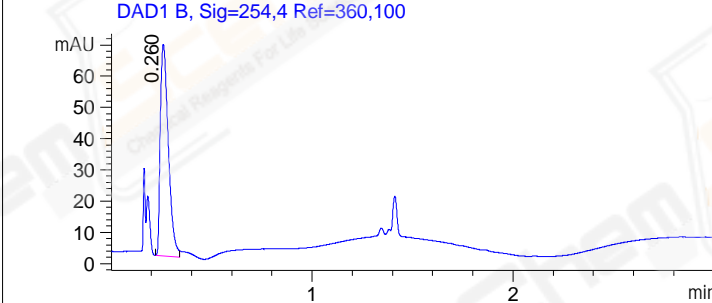
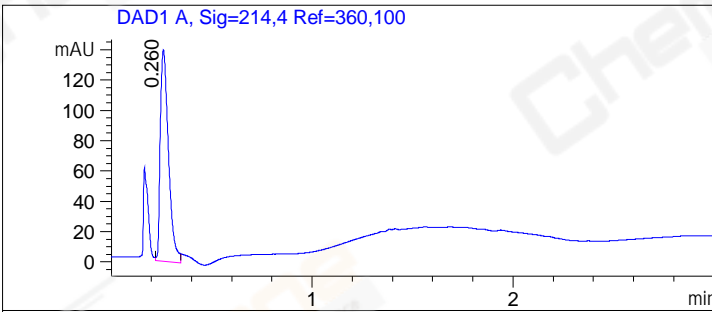


File ..20-56\009-P1-E10-LJC202304140028-S1525367.D Tgt Mass (EZX):  
 Injection Date : 14-Apr-23, 12:01:30 Seq. Line : 9  
 Sample Name : LJC202304140028-S1525367 Location : P1-E-10  
 Acq. Operator : LY Inj : 1  
 Spec. Reported : MS Integration Inj Volume : 1 ul  
 Acq. Method : D:\ChemStation\1\Data\20230414\20230414 2023-04-14 11-20-56\1-POS-3MIN(100-  
 Analysis Method : D:\ChemStation\1\Data\20230414\20230414 2023-04-14 11-20-56\1-POS-3MIN(100-  
 CAS NO. : 1201644-34-9  
 Method Info : Mobile Phase: A: Water (0.05%TFA) B: ACN (0.05%TFA)  
 Gradient: 5% to 95%B within 1.3 min  
 Flow Rate: 1.0ml/min  
 Column: InfinityLab Poroshell 120 EC-C18,2.1\*50mm,2.7µm  
 Oven Temperature: 45 degree Celsius



Integration Results for DAD1 A, Sig=214,4 Ref=360,100

RetTim	Width	Area	Height	Area%	MS(+)
0.26	0.05	398.31	139.55	100.00	286

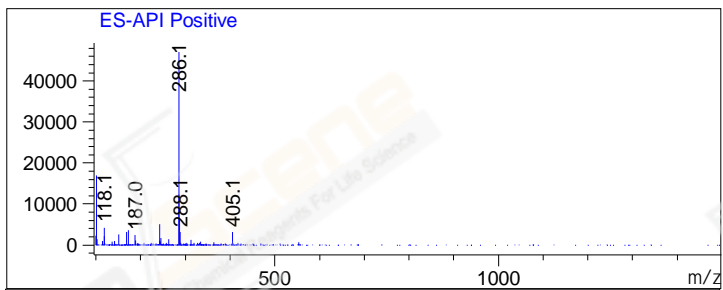
Integration Results for DAD1 B, Sig=254,4 Ref=360,100

RetTim	Width	Area	Height	Area%	MS(+)
0.26	0.05	189.51	67.86	100.00	286

Integration Results for MSD1 TIC, MS File

RetTim	Width	Area	Height	Area%	MS(+)
0.39	0.15	2552096.00	286089.56	100.00	286

Ret. Time: 0.39 &lt;&lt;&lt;&lt; POSITIVE SPECTRA &gt;&gt;&gt;&gt;



## Base Peak Ion Ratios:

## 2nd Largest Peak Ion Ratios:

Ion	Mass	Abundance	Ratio	Ion	Mass	Abundance	Ratio
A	286.10	47010	100.00	B	101.15	16932	100.00
A + 1	287.10	6251	13.30	B + 1	102.15	1338	7.90
A + 2	288.10	3099	6.59	B + 2	103.15	87	0.51
A + 3	289.05	529	1.13	B + 3	104.10	44	0.26
A + 4	290.00	213	0.45	B + 4	105.00	58	0.34
A + 5	291.00	38	0.08				

\*\*\* End of Report \*\*\*