

File ..-04-19\BIZ2023-418-SCH6-UPLC-MS-01-016587.D Tgt Mass (EZ):

Injection Date : 19 Apr 23 3:10 pm +0800 Seq. Line : 0

Sample Name : BIZ2023-418-SCH6 Location : P2-B-09

Acq. Operator : LY\_2278 Inj : 1

Spec. Reported : MS Integration Inj Volume : 0.5 ul

Acq. Method : D:\LCMS\Methods\1-POS-UPLC2.0MIN(0.8ML)-(150-1000).M

Analysis Method : D:\LCMS\METHODS\1-POS-UPLC2.0MIN(0.8ML)-(150-1000).M

CAS NO. : 950455-15-9 Walkup method: '1-POS-2MIN' Project: BIZ2023 Target:

Method Info : Mobile Phase: A: water(0.01%TFA) B:ACN(0.01%TFA)

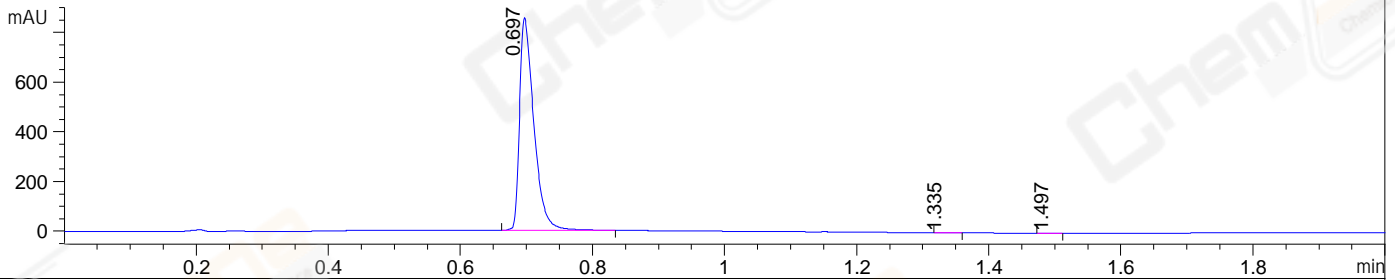
Gradient: 5% to 95%B within 0.6 min

Flow Rate : 0.8ml/min

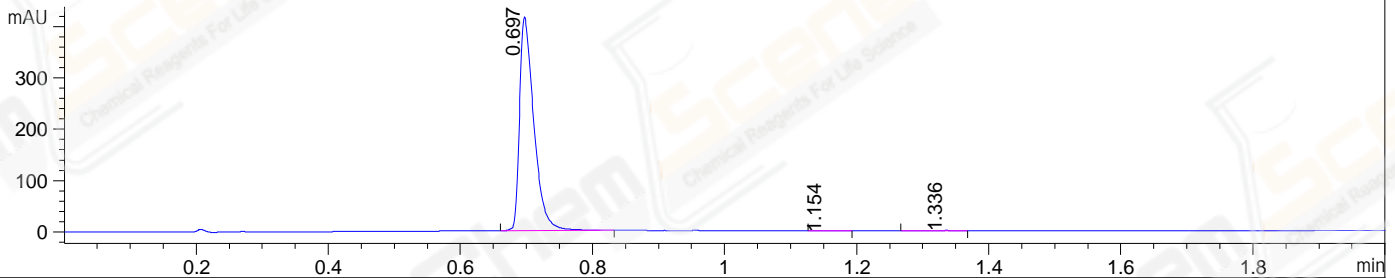
Column : Poroshell 120 EC- C18, 2.1\*50mm,1.9um A-RP-517

Oven Temperature : 45C

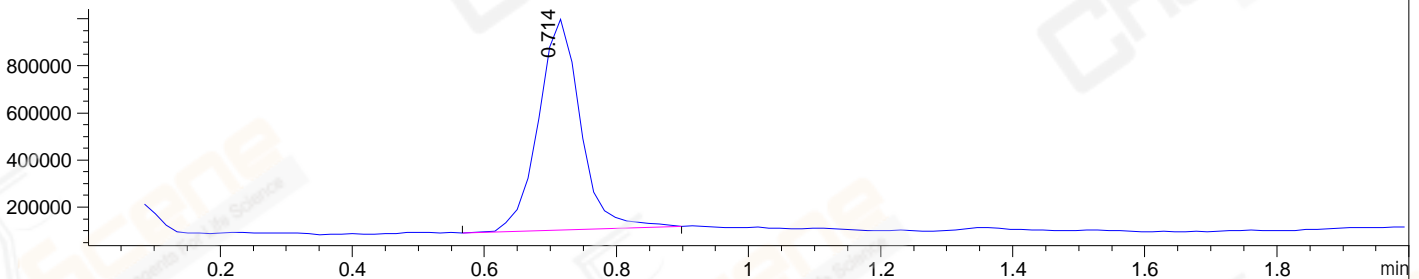
DAD1 A, Sig=214,4 Ref=off



DAD1 B, Sig=254,4 Ref=off



MSD1 TIC, MS File ES-API, Pos, Scan, Frag: 70



Integration Results for DAD1 A, Sig=214,4 Ref=off

RetTim	Width	Area	Height	Area%	MS (+)
0.70	0.02	1285.68	853.82	99.90	341
1.33	0.02	1.16	1.05	0.09	161
1.50	0.01	0.11	0.10	0.01	161

Integration Results for DAD1 B, Sig=254,4 Ref=off

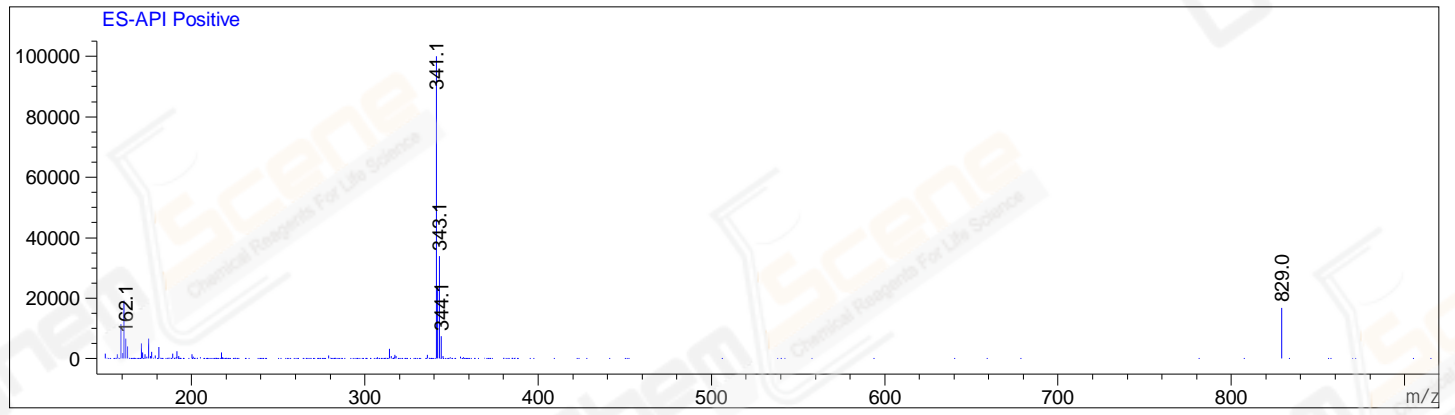
RetTim	Width	Area	Height	Area%	MS (+)
0.70	0.02	626.17	414.94	99.74	341
1.15	0.02	0.54	0.37	0.09	161
1.34	0.02	1.08	0.85	0.17	161

Integration Results for MSD1 TIC, MS File

RetTim	Width	Area	Height	Area%	MS (+)
0.71	0.07	3954521.50	895371.69	100.00	341

Ret. Time: 0.71

<<<< POSITIVE SPECTRA >>>>



\*\*\* End of Report \*\*\*