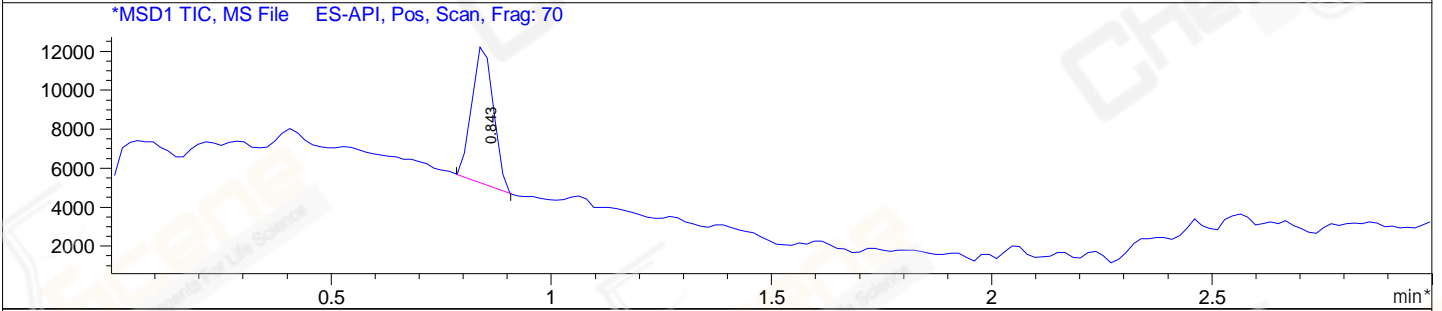
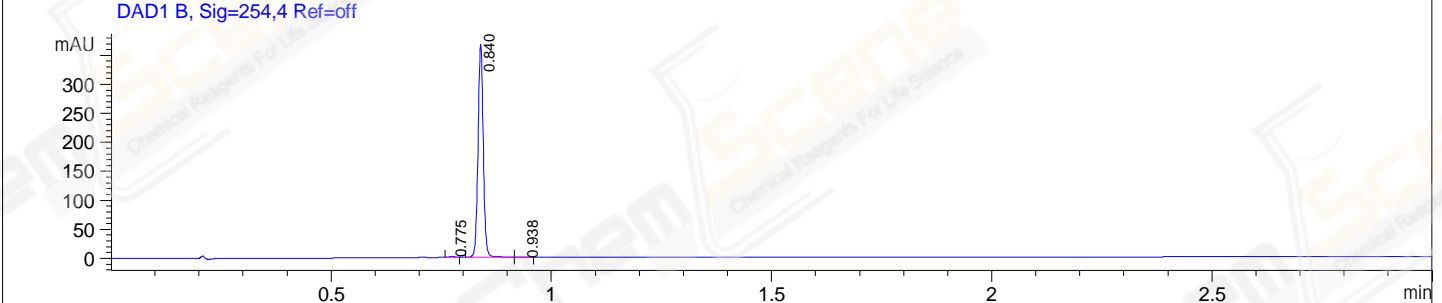
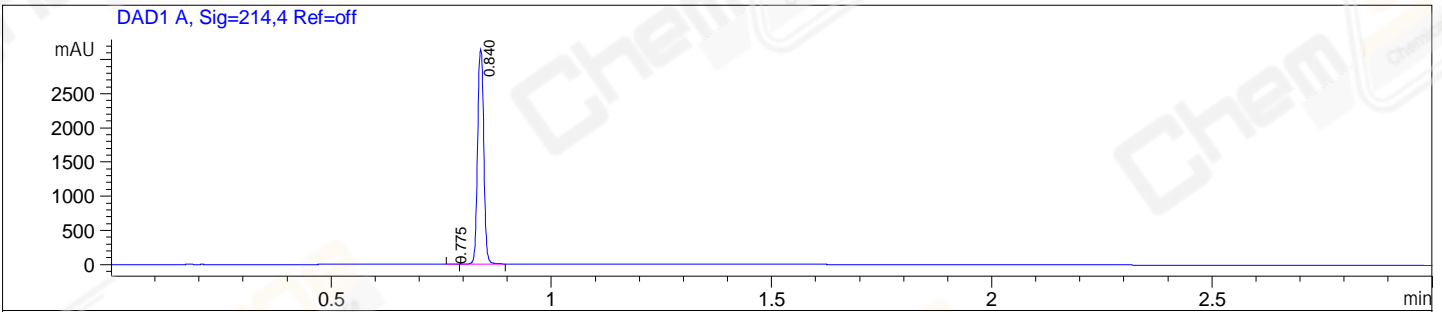


File E:\ChemStation\1\DATA\2023\2023-07\2023-07-17\CPK2023-717-26264-UPLC-MS-10-008163.D
 Injection Date : 17-Jul-23, 18:12:21 Tgt Mass(EZX) :
 Sample Name : CPK2023-717-26264 Location : P2-F-04
 Acq. Operator : LY_2278 Inj : 1
 Spec. Reported : MS Integration Inj Volume : 1 ul
 Acq. Method : E:\ChemStation\1\Methods\1-POS-UPLC3.0MIN(1.2)(150-1000).M
 Analysis Method : E:\CHEMSTATION\1\METHODS\1-POS-UPLC3.0MIN(1.2)(150-1000).M
 CAS NO. : 4233-96-9 WalkUp method: '1-POS-3MIN' Project: CPK2023
 Method Info : Mobile Phase: A: water(0.01%TFA) B:ACN(0.01%TFA)
 Gradient: 5% to 95%B within 2.0 min
 Flow Rate :1.2ml/min
 Column :Shim-pack Scepter C18-120, 3.0*33mm,3um
 Oven Temperature : 45C



Integration Results for DAD1 A, Sig=214,4 Ref=off

RetTim	Width	Area	Height	Area%
0.78	0.01	3.35	4.57	0.11
0.84	0.02	3069.99	3132.70	99.89

Integration Results for DAD1 B, Sig=254,4 Ref=off

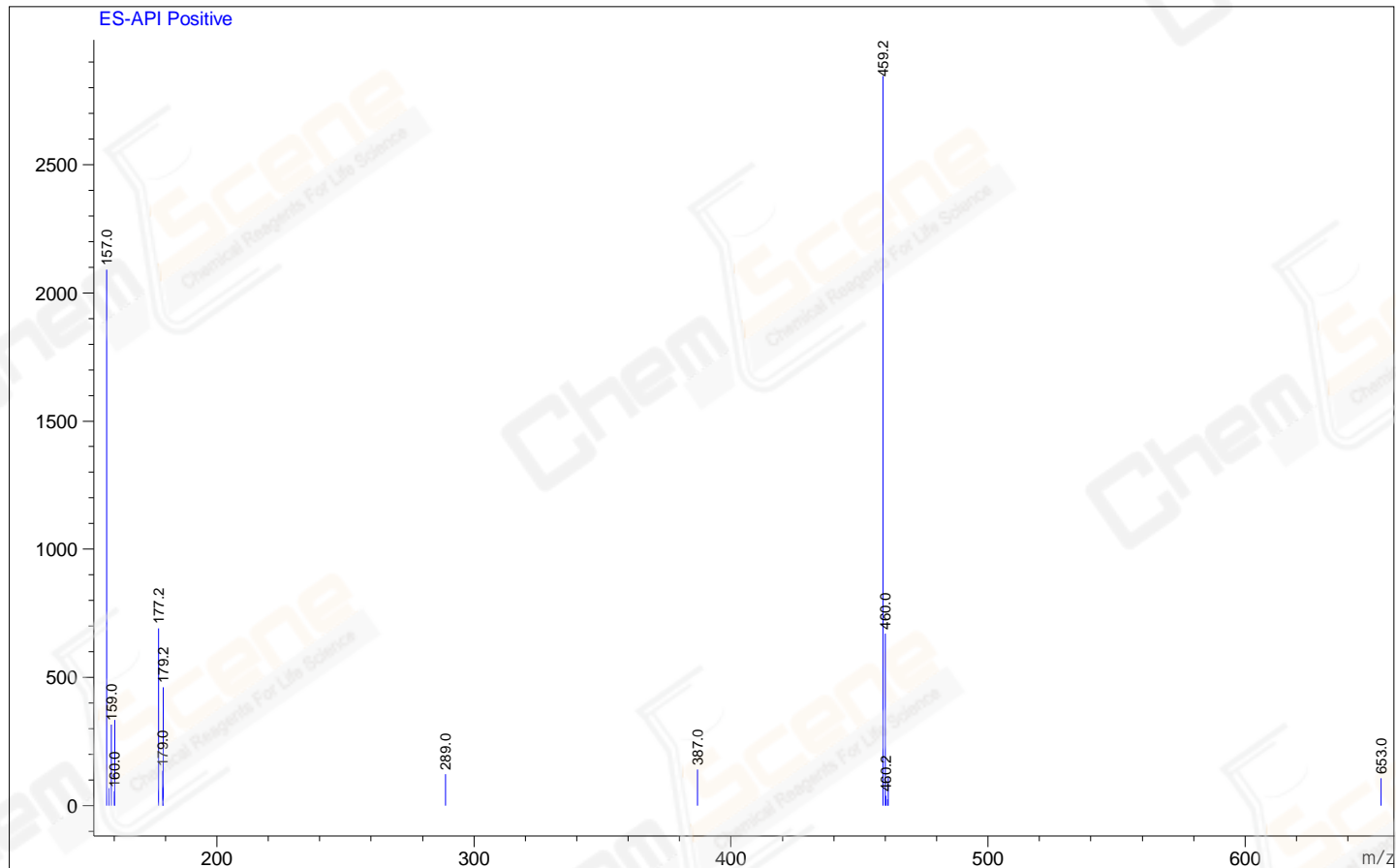
RetTim	Width	Area	Height	Area%
0.77	0.01	1.18	1.61	0.39
0.84	0.01	304.92	369.49	99.40
0.94	0.02	0.65	0.49	0.21

Integration Results for MSD1 TIC, MS File

RetTim	Width	Area	Height	Area%
0.84	0.06	23900.59	7222.68	100.00

Ret. Time: 0.84

<<<< POSITIVE SPECTRA >>>>



*** End of Report ***