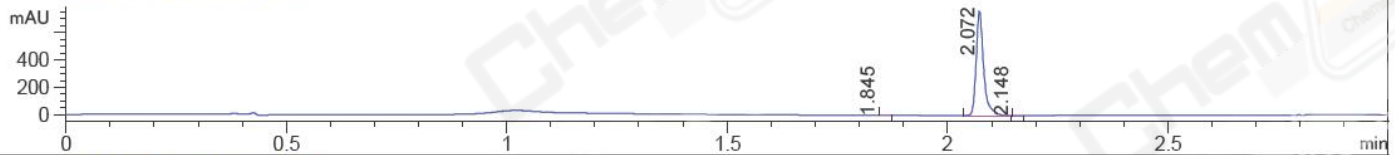
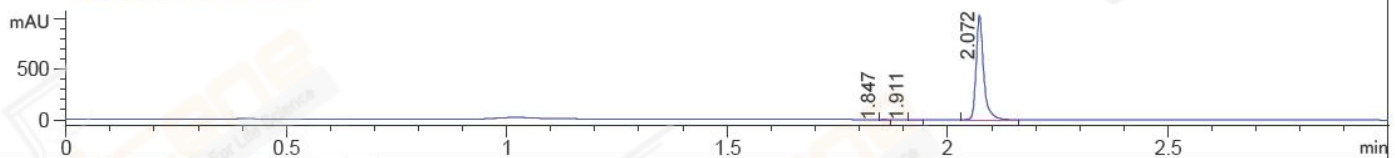


File ..Data\20170919\20170919-1\BIZ2017-919-WYQ7.D Tgt Mass (CHM):
 Injection Date : 19 Sep 17 12:29 pm +0800 Seq. Line : 3
 Sample Name : BIZ2017-919-WYQ7 Location : P2-E-06
 Acq. Operator : SYSTEM Inj : 1
 Spec. Reported : MS Integration Inj Volume : 1 ul
 Acq. Method : D:\LCMS03\Data\20170919\20170919-1\1-POS-3MIN.M
 Analysis Method : D:\LCMS03\Data\20170919\20170919-1\1-POS-3MIN.M
 Catalog No : CS-0581 Batch#26357
 Method Info : Mobile Phase: A: water(0.01%TFA) B:ACN(0.01%TFA)
 Gradient: 5% to 95%B within 1.3 min
 Flow Rate :1.8ml/min
 Column :SunFire C18, 4.6*50mm,3.5um A-RP-186
 Oven Temperature : 45C

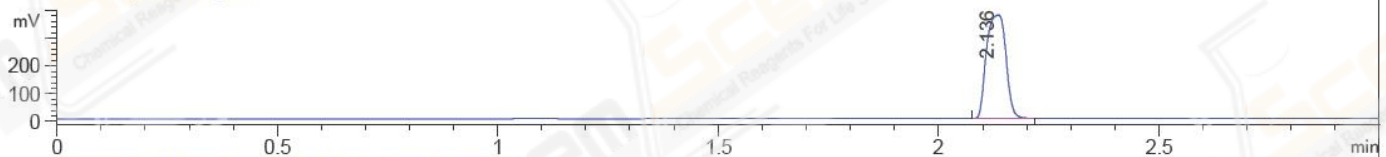
DAD1 A, Sig=214,4 Ref=off



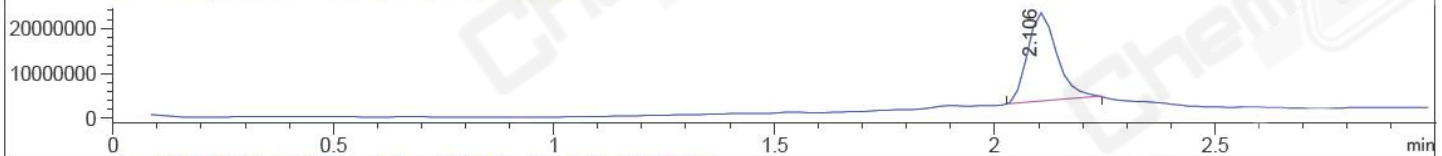
DAD1 B, Sig=254,4 Ref=off



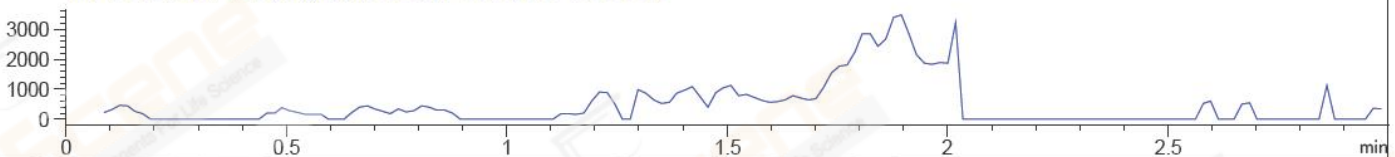
ELS1 A, ELSD Signal



MSD1 TIC, MS File ES-API, Pos, Scan, Frag: 70



Ion 456.1, MSD1 456.1, Target Mass 456.1 Positive, EIC=455.8:456.8



Integration Results for DAD1 A, Sig=214,4 Ref=off

RetTim	Width	Area	Height	Area%	MS (+)
1.84	0.01	0.39	-0.14	0.04	433
2.07	0.02	897.36	753.89	99.90	457
2.15	0.02	0.55	0.14	0.06	457

Integration Results for DAD1 B, Sig=254,4 Ref=off

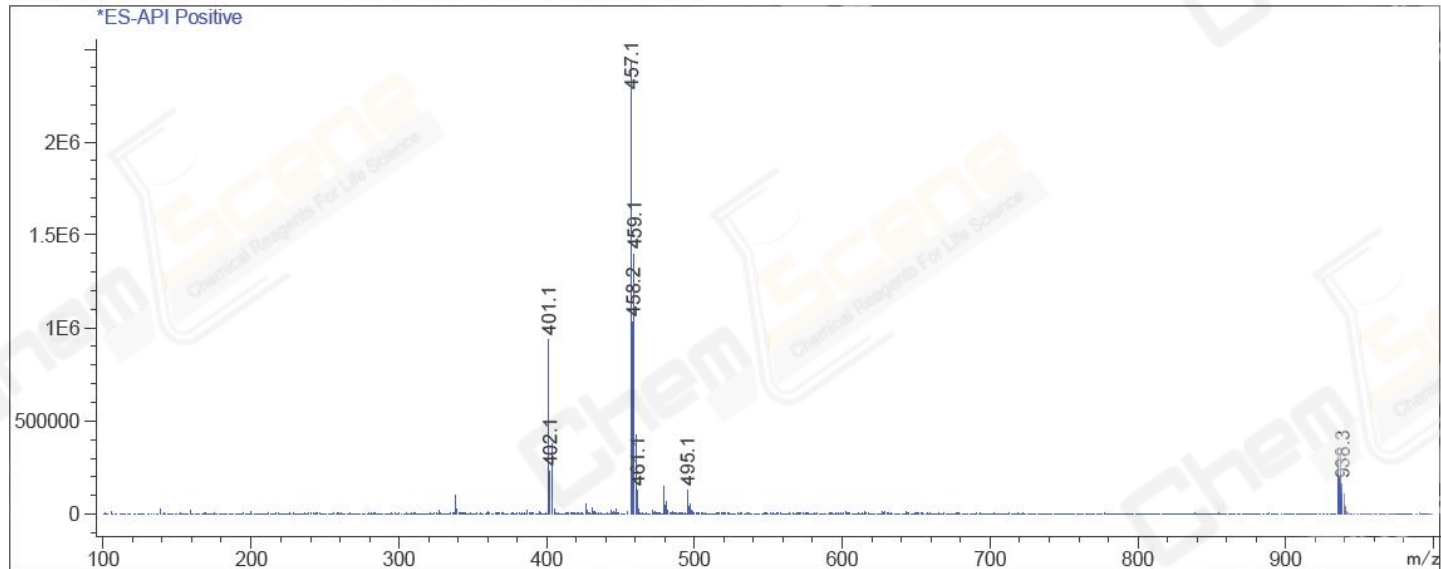
RetTim	Width	Area	Height	Area%	MS (+)
1.85	0.01	0.46	0.03	0.04	433
1.91	0.02	0.75	0.01	0.06	338
2.07	0.02	1232.57	1035.50	99.90	457

Integration Results for MSD1 TIC, MS File

RetTim	Width	Area	Height	Area%	MS (+)
2.11	0.08	89966800.00	19930136.00	100.00	457

Ret. Time: 2.11

<<<< POSITIVE SPECTRA >>>>



*** End of Report ***