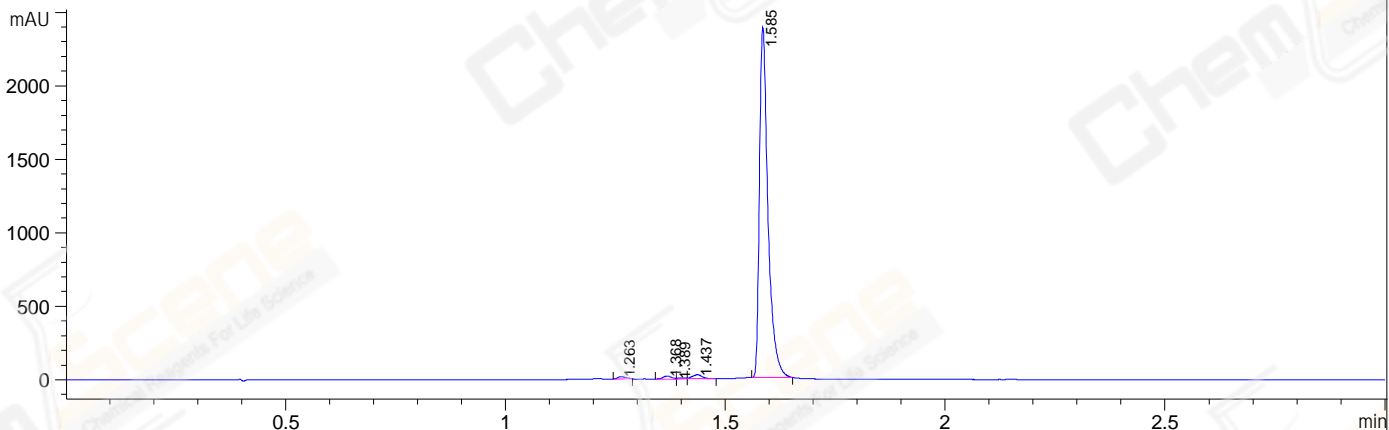
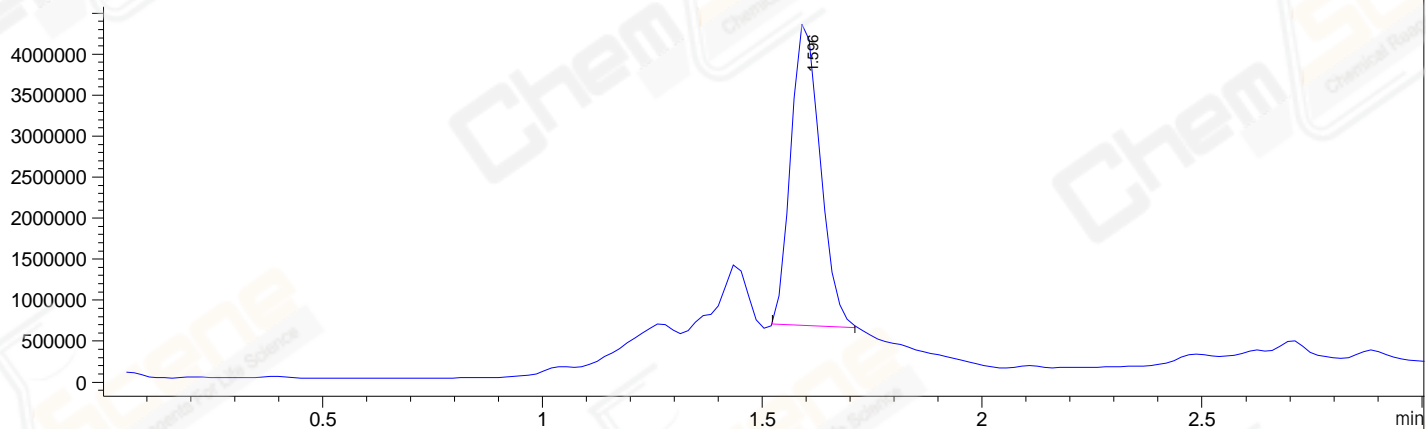


File E:\ChemStation\1\DATA\2023\2023-04\2023-04-26\BIZ2023-425-WLQ40-LCMS-20-003103.D
 Injection Date : 26-Apr-23, 10:11:59 Tgt Mass(EZX) :
 Sample Name : BIZ2023-425-WLQ40 Location : P2-B-07
 Acq. Operator : LY_2278 Inj : 1
 Spec. Reported : MS Integration Inj Volume : 5 ul
 Acq. Method : E:\ChemStation\1\Methods\1-POS-3MIN(1.8ML)-(150-1000).M
 Analysis Method : E:\CHEMSTATION\1\METHODS\1-POS-3MIN(1.8ML)-(150-1000).M
 CAS NO. : 2094547-67-6 WalkUp method: '1-POS-3MIN' Project: BIZ2023
 Method Info : Mobile Phase: A: water(0.01%FA) B:ACN(0.01%FA)
 Flow Rate :1.8ml/min
 Column :SunFire C18, 4.6*50mm,3.5um
 Oven Temperature : 45C

DAD1 B, Sig=254,4 Ref=off



MSD1 TIC, MS File ES-API, Pos, Scan, Frag: 70



Integration Results for DAD1 B, Sig=254,4 Ref=off

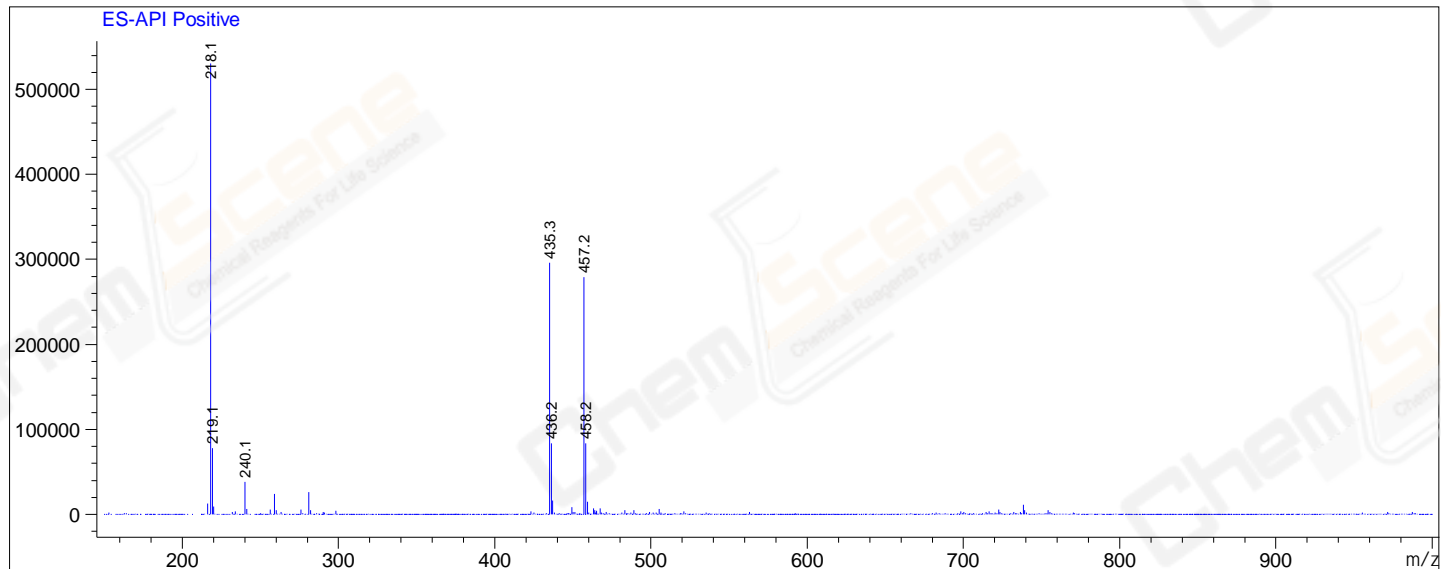
RetTim	Width	Area	Height	Area%
1.26	0.02	19.24	15.83	0.58
1.37	0.02	27.58	20.67	0.83
1.39	0.02	7.54	4.19	0.23
1.44	0.03	44.92	28.91	1.35
1.59	0.02	3223.24	2386.96	97.01

Integration Results for MSD1 TIC, MS File

RetTim	Width	Area	Height	Area%
1.60	0.07	16994204.00	3777278.25	100.00

Ret. Time: 1.60

<<<< POSITIVE SPECTRA >>>>



*** End of Report ***