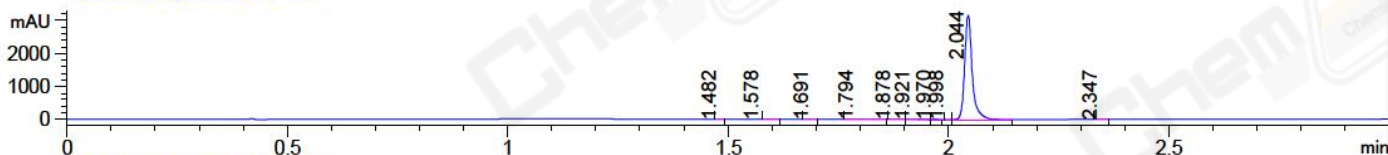
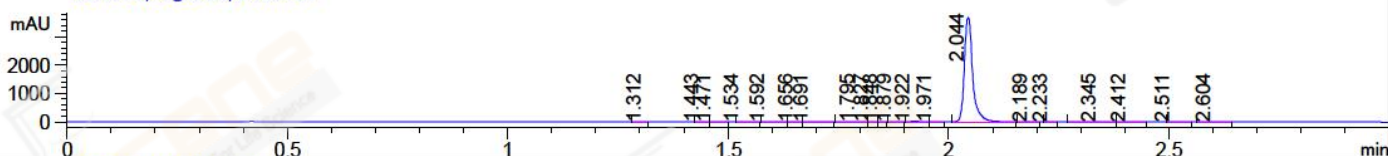


File ..\Data\20170925\20170925 1\XWJ4624-012-1-2.D Tgt Mass (CHM):
 Injection Date : 25 Sep 17 4:06 pm +0800 Seq. Line : 80
 Sample Name : XWJ4624-012-1-2 Location : P2-B-05
 Acq. Operator : SYSTEM Inj : 1
 Spec. Reported : MS Integration Inj Volume : 1 ul
 Acq. Method : D:\LCMS03\Data\20170925\20170925 1\1-POS-3MIN.M
 Analysis Method : D:\LCMS03\Data\20170925\20170925 1\1-POS-3MIN.M
 Catalog No : CS-0581 Batch#26489
 Method Info : Mobile Phase: A: water(0.01%TFA) B:ACN(0.01%TFA)
 Gradient: 5% to 95%B within 1.3 min
 Flow Rate :1.8ml/min
 Column :SunFire C18, 4.6*50mm,3.5um A-RP-186
 Oven Temperature : 45C

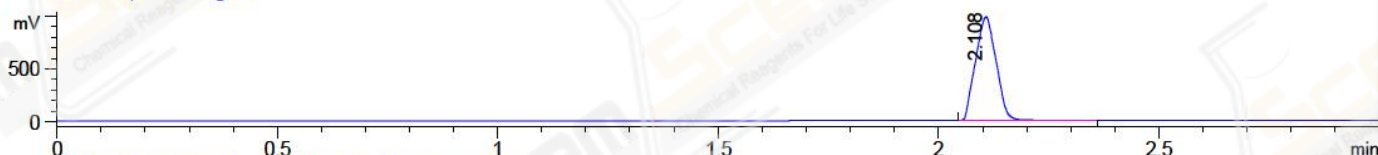
DAD1 A, Sig=214,4 Ref=off



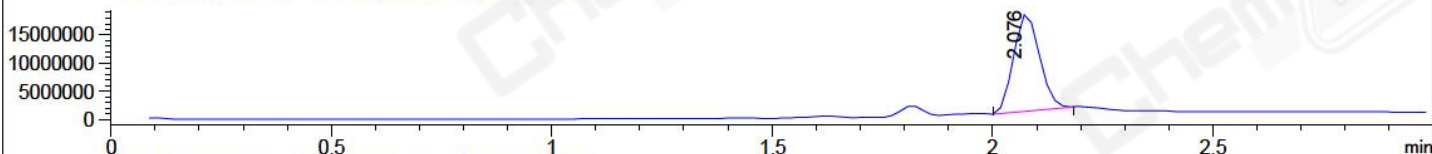
DAD1 B, Sig=254,4 Ref=off



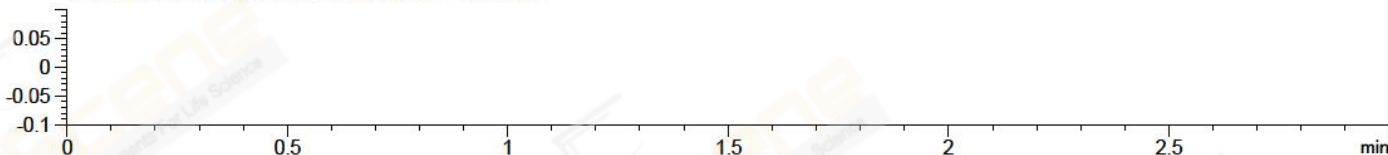
ELS1 A, ELSD Signal



MSD1 TIC, MS File ES-API, Pos, Scan, Frag: 70



Ion 0, MSD1 0, Target Mass 0 Positive, EIC=-0.30:0.70



Integration Results for DAD1 A, Sig=214,4 Ref=off

RetTim	Width	Area	Height	Area%	MS (+)
1.48	0.01	0.44	0.50	0.01	233
1.58	0.02	2.28	0.07	0.06	485
1.69	0.02	1.58	1.58	0.04	233
1.79	0.02	6.79	3.97	0.18	225
1.88	0.02	4.76	4.63	0.13	225
1.92	0.02	5.63	3.29	0.15	651
1.97	0.01	1.60	2.01	0.04	651
2.00	0.01	0.11	0.21	0.00	651
2.04	0.02	3783.18	3155.16	99.37	457
2.35	0.02	0.85	0.73	0.02	105

Integration Results for DAD1 B, Sig=254,4 Ref=off

RetTim	Width	Area	Height	Area%	MS (+)
1.31	0.05	0.88	0.32	0.02	233
1.44	0.01	0.08	0.09	0.00	752
1.47	0.02	0.24	0.17	0.00	233
1.53	0.03	0.42	0.23	0.01	350

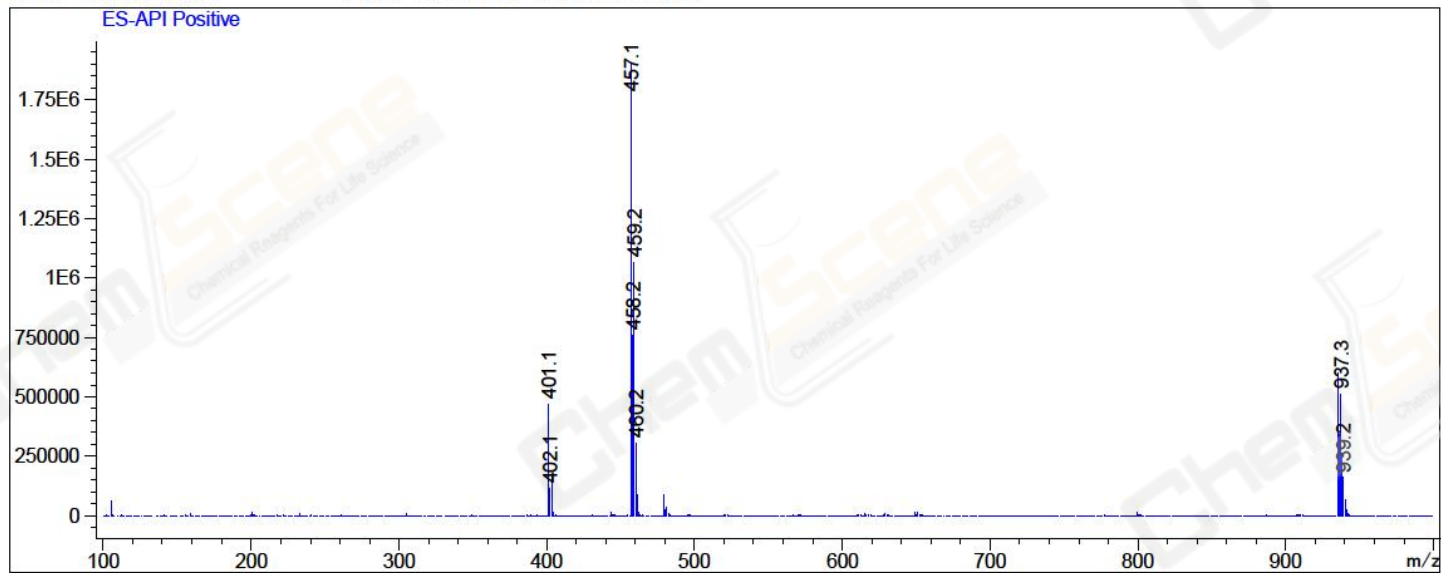
1.59	0.02	4.14	2.71	0.09	485
1.66	0.01	0.47	0.50	0.01	485
1.69	0.02	3.28	2.45	0.07	233
1.80	0.02	3.09	1.91	0.06	225
1.83	0.01	0.09	0.15	0.00	225
1.85	0.01	0.14	0.19	0.00	225
1.88	0.02	2.68	2.62	0.06	225
1.92	0.02	7.07	4.43	0.15	651
1.97	0.01	2.62	3.14	0.05	651
2.04	0.02	4807.78	3672.68	99.36	457
2.19	0.03	0.71	0.38	0.01	457
2.23	0.02	0.33	0.33	0.01	105
2.34	0.03	3.00	1.34	0.06	105
2.41	0.03	1.20	0.66	0.02	105
2.51	0.03	0.27	0.12	0.01	105
2.60	0.03	0.31	0.14	0.01	105

Integration Results for MSD1 TIC, MS File

RetTim	Width	Area	Height	Area%	MS (+)
2.08	0.06	71161936.00	17332644.00	100.00	457

Ret. Time: 2.08

<<<< POSITIVE SPECTRA >>>>



*** End of Report ***