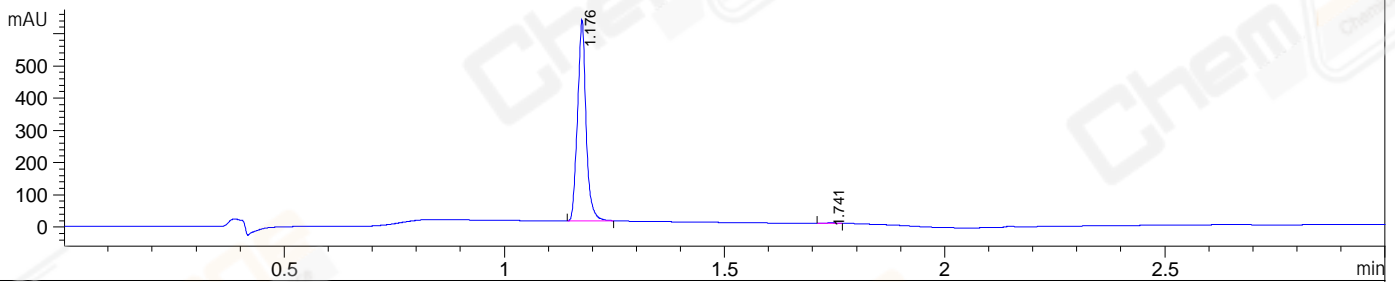


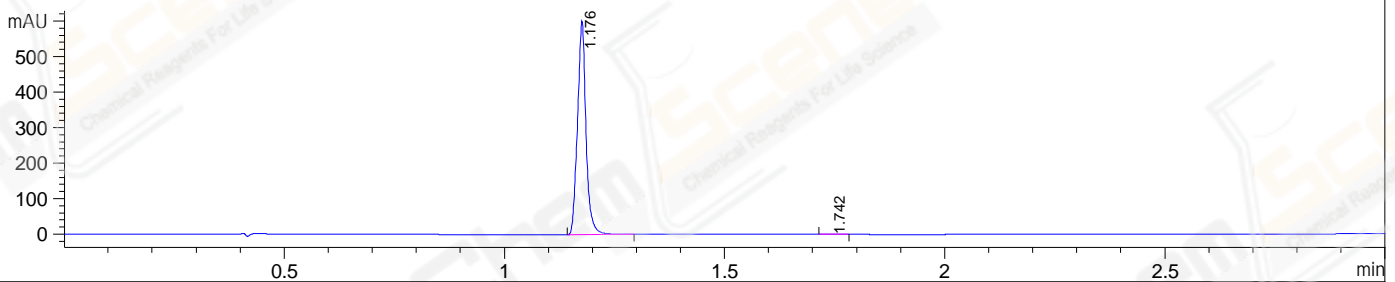
File E:\ChemStation\1\DATA\2023\2023-05\2023-05-06\BIZ2023-506-SCH30-LCMS-20-003536.D

Injection Date : 06-May-23, 18:31:38 Tgt Mass(EZX) :  
 Sample Name : BIZ2023-506-SCH30 Location : P1-D-04  
 Acq. Operator : LY\_2278 Inj : 1  
 Spec. Reported : MS Integration Inj Volume : 3 ul  
 Acq. Method : E:\ChemStation\1\Methods\1-POS-3MIN(1.8ML)-(150-1000).M  
 Analysis Method : E:\ChemStation\1\Methods\1-POS-3MIN(1.8ML)-(150-1000).M  
 CAS NO. : 905-96-4 WalkUp method: '1-POS-3MIN' Project: BIZ2023  
 Method Info : Mobile Phase: A: water(0.01%FA) B:ACN(0.01%FA)  
 Flow Rate :1.8ml/min  
 Column :SunFire C18, 4.6\*50mm,3.5um  
 Oven Temperature : 45C

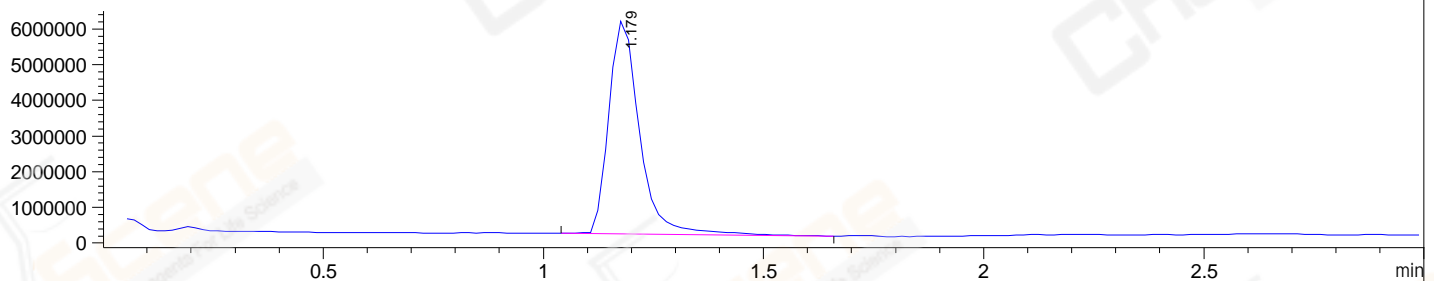
DAD1 A, Sig=214,4 Ref=off



DAD1 B, Sig=254,4 Ref=off



MSD1 TIC, MS File ES-API, Pos, Scan, Frag: 70



Integration Results for DAD1 A, Sig=214,4 Ref=off

RetTim	Width	Area	Height	Area%
1.18	0.02	837.13	623.11	99.63
1.74	0.03	3.11	2.05	0.37

Integration Results for DAD1 B, Sig=254,4 Ref=off

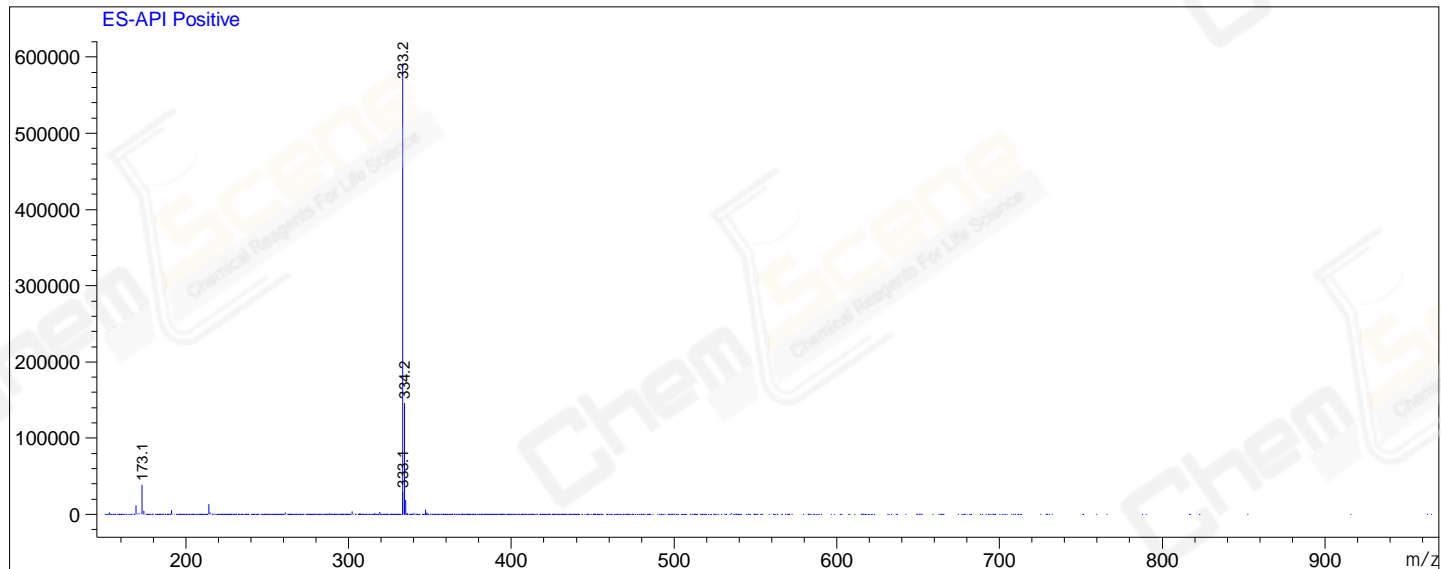
RetTim	Width	Area	Height	Area%
1.18	0.02	803.92	600.57	99.75
1.74	0.02	2.05	1.35	0.25

Integration Results for MSD1 TIC, MS File

RetTim	Width	Area	Height	Area%
1.18	0.07	29218646.00	5997506.50	100.00

Ret. Time: 1.18

<<<< POSITIVE SPECTRA >>>>



\*\*\* End of Report \*\*\*