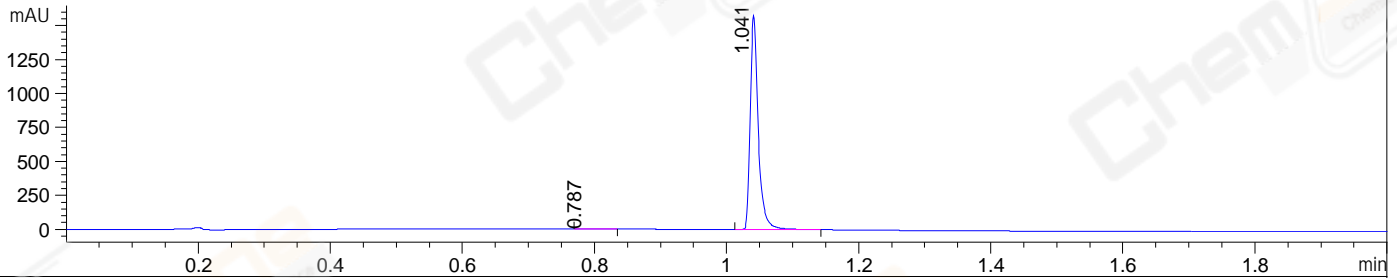
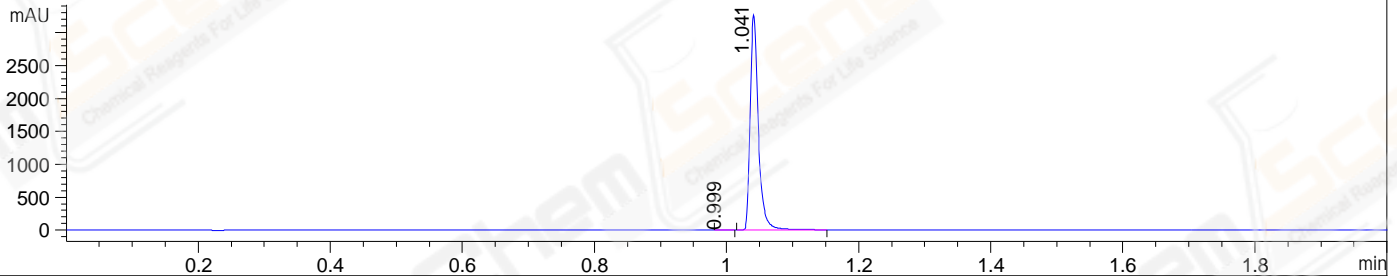


File ..23-05-12\WGY24719-002-1-UPLC-MS-01-018828.D Tgt Mass (EZX):
 Injection Date : 12 May 23 4:49 pm +0800 Seq. Line : 0
 Sample Name : WGY24719-002-1 Location : P2-D-11
 Acq. Operator : LY_2278 Inj : 1
 Spec. Reported : MS Integration Inj Volume : 2 ul
 Acq. Method : D:\LCMS\Methods\1-POS-UPLC2.0MIN(0.8ML)-(150-1000).M
 Analysis Method : D:\LCMS\METHODS\1-POS-UPLC2.0MIN(0.8ML)-(150-1000).M
 CAS NO. : 2094547-67-6 Walkup method: '1-POS-2MIN' Project: LD1797 Target:
 Method Info : Mobile Phase: A: water(0.01%TFA) B:ACN(0.01%TFA)
 Gradient: 5% to 95%B within 0.6 min
 Flow Rate : 0.8ml/min
 Column :Poroshell 120 EC- C18, 2.1*50mm,1.9um
 Oven Temperature : 45C

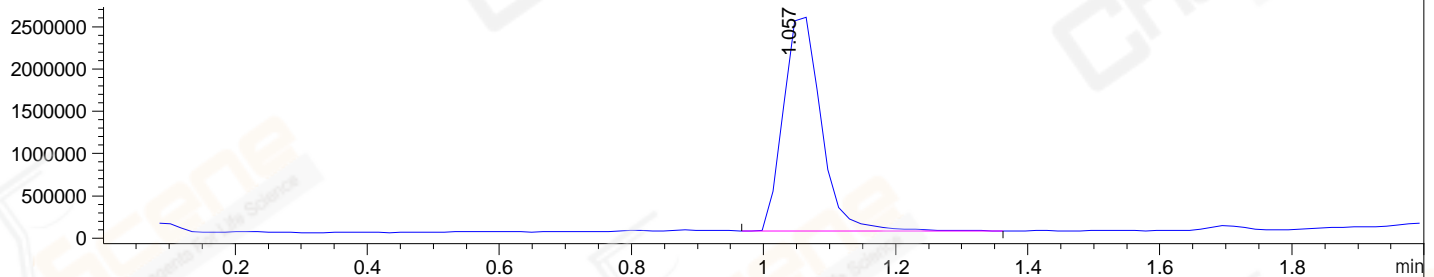
DAD1 A, Sig=214,4 Ref=off



DAD1 B, Sig=254,4 Ref=off



MSD1 TIC, MS File ES-API, Pos, Scan, Frag: 70



Integration Results for DAD1 A, Sig=214,4 Ref=off

RetTim	Width	Area	Height	Area%	MS (+)
0.79	0.02	1.58	1.07	0.12	261
1.04	0.01	1329.79	1578.27	99.88	218

Integration Results for DAD1 B, Sig=254,4 Ref=off

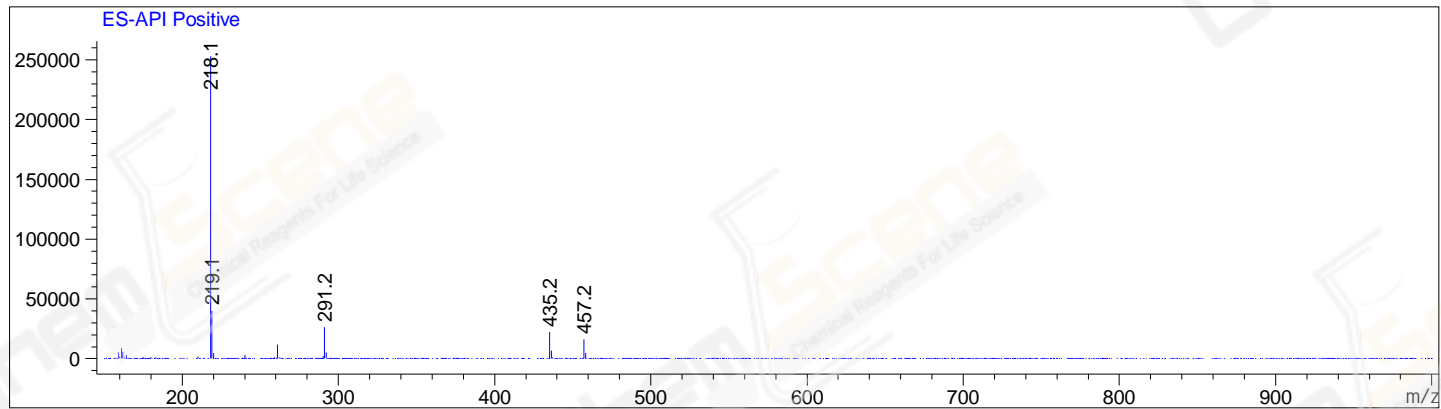
RetTim	Width	Area	Height	Area%	MS (+)
1.00	0.02	1.81	1.54	0.06	218
1.04	0.01	2804.91	3273.43	99.94	218

Integration Results for MSD1 TIC, MS File

RetTim	Width	Area	Height	Area%	MS (+)
1.06	0.06	10072942.00	2616888.50	100.00	218

Ret. Time: 1.06

<<<< POSITIVE SPECTRA >>>>



*** End of Report ***