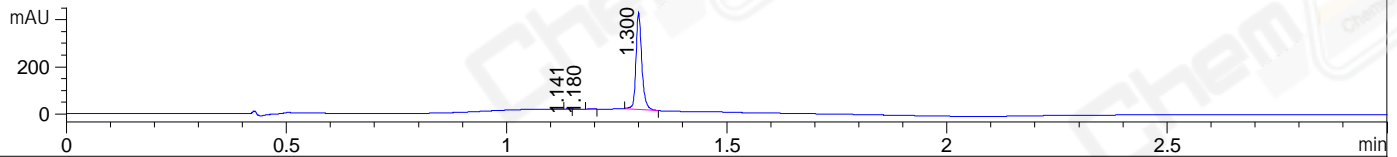
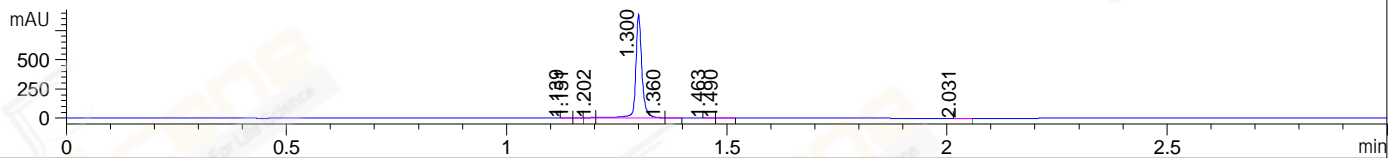


File ..3\Data\20171019\20171019\BIZ2017-019-WYQ4.D Tgt Mass (CHM):
 Injection Date : 19 Oct 17 12:19 pm +0800 Seq. Line : 43
 Sample Name : BIZ2017-019-WYQ4 Location : P1-D-03
 Acq. Operator : SYSTEM Inj : 1
 Spec. Reported : MS Integration Inj Volume : 1 ul
 Acq. Method : D:\LCMS03\Data\20171019\20171019\1-POS-3MIN.M
 Analysis Method : D:\LCMS03\Data\20171019\20171019\1-POS-3MIN.M
 CAS NO. : 856925-71-8
 Method Info : Mobile Phase: A: water(0.01%TFA) B:ACN(0.01%TFA)
 Gradient: 5% to 95%B within 1.3 min
 Flow Rate :1.8ml/min
 Column :SunFire C18, 4.6*50mm,3.5um A-RP-186
 Oven Temperature : 45C

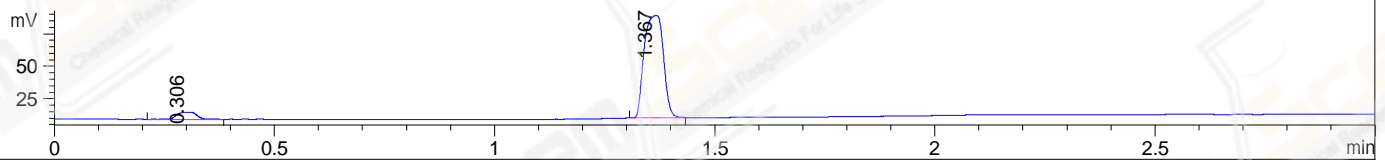
DAD1 A, Sig=214,4 Ref=off



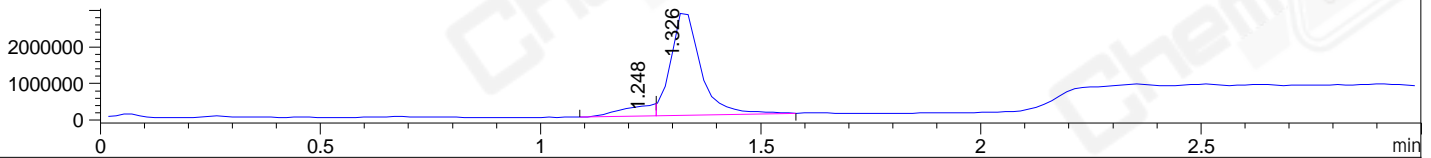
DAD1 B, Sig=254,4 Ref=off



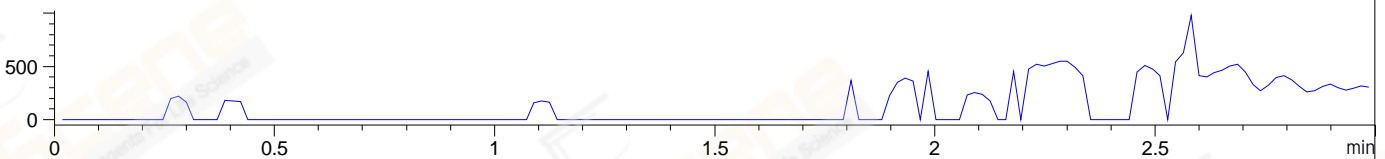
ELS1 A, ELSD Signal



MSD1 TIC, MS File ES-API, Pos, Scan, Frag: 70



Ion 292.1, MSD1 292.1, Target Mass 292.1 Positive, EIC=291.8:292.8



Integration Results for DAD1 A, Sig=214,4 Ref=off

RetTim	Width	Area	Height	Area%	MS (+)
1.14	0.02	0.93	1.00	0.24	311
1.18	0.01	1.29	0.01	0.34	311
1.30	0.02	377.29	412.68	99.42	293

Integration Results for DAD1 B, Sig=254,4 Ref=off

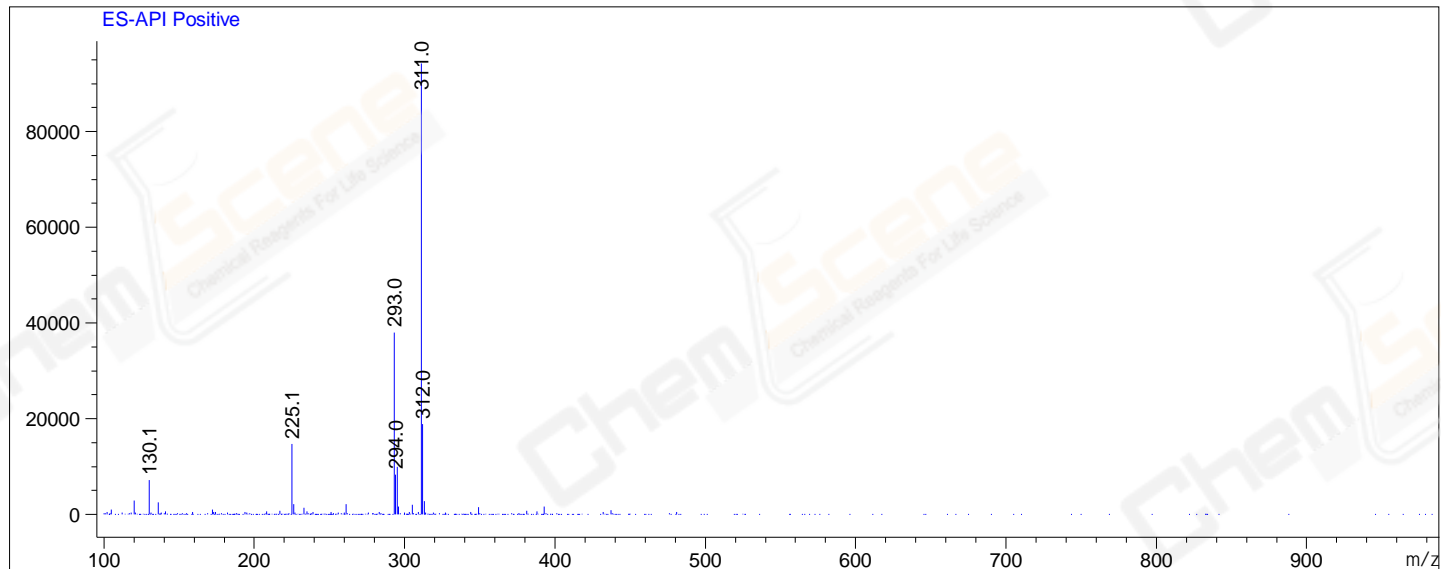
RetTim	Width	Area	Height	Area%	MS (+)
1.14	0.02	0.61	0.54	0.07	311
1.15	0.02	0.35	0.32	0.04	311
1.20	0.02	1.48	1.47	0.17	311
1.30	0.02	856.36	887.30	99.55	293
1.36	0.01	0.48	0.79	0.06	293
1.46	0.02	0.12	0.14	0.01	293
1.49	0.02	0.37	0.22	0.04	293
2.03	0.01	0.51	0.56	0.06	105

Integration Results for MSD1 TIC, MS File

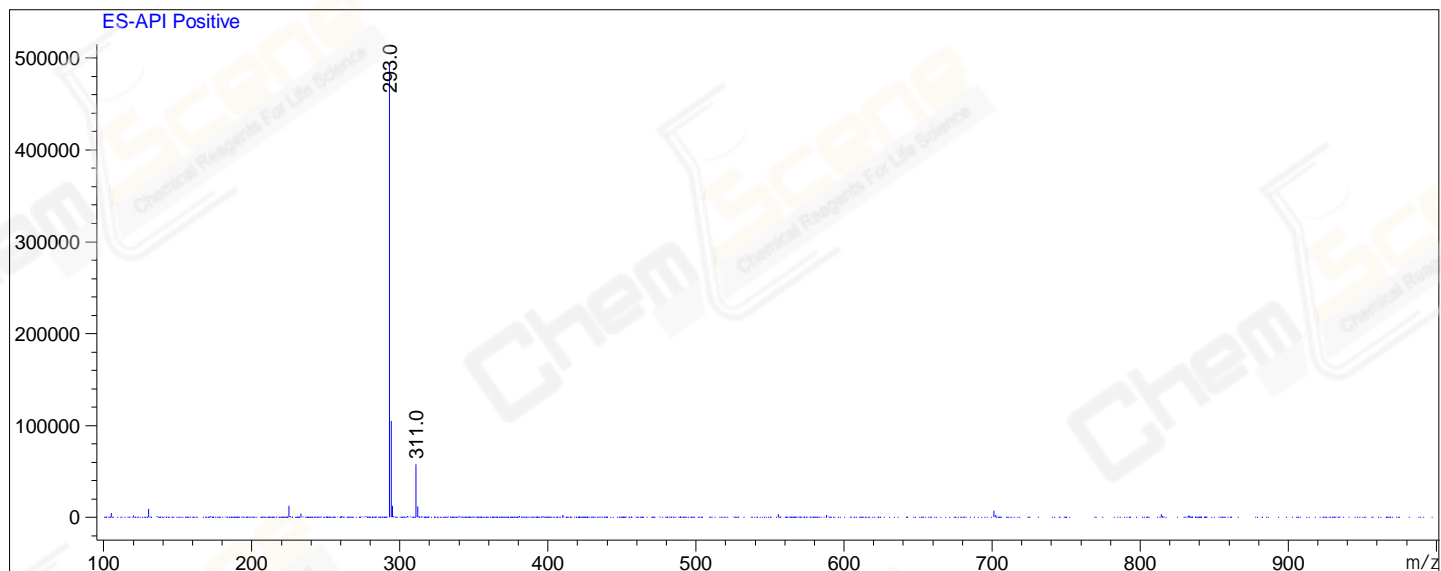
1.25	0.10	1745710.50	287052.41	11.72	311
1.33	0.07	13148313.00	2932406.75	88.28	293

RetTim	Width	Area	Height	Area%	MS(+)
--------	-------	------	--------	-------	-------

Ret. Time: 1.25 <<<< POSITIVE SPECTRA >>>>



Ret. Time: 1.33



*** End of Report ***