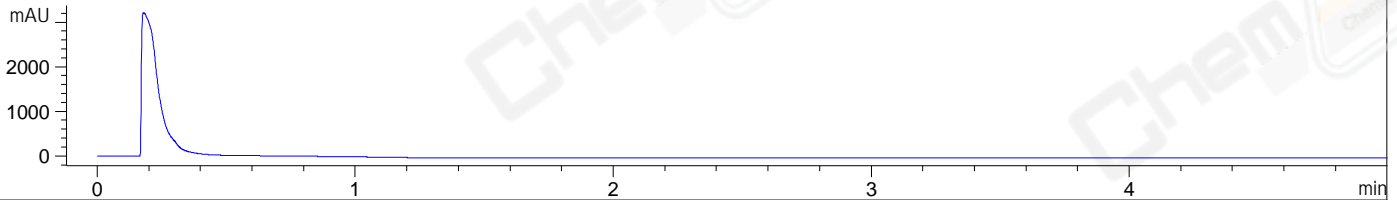
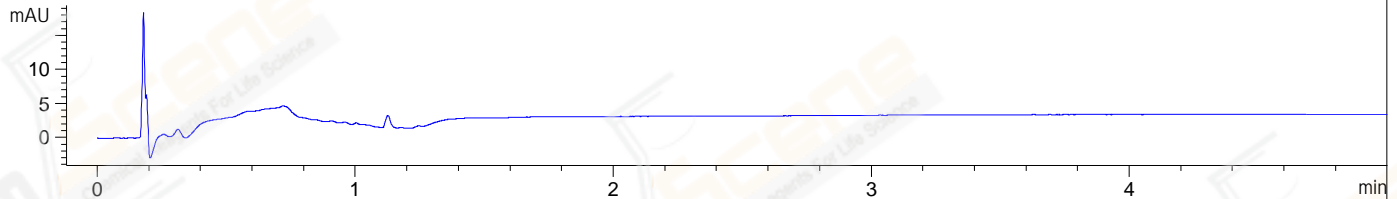


File ..2-12-09\LJC202212030094-UPLC-MS-03-046371.D Tgt Mass (EZX):
 Injection Date : 09-Dec-22, 14:42:45 Seq. Line : 0
 Sample Name : LJC202212030094 Location : P2-B-08
 Acq. Operator : LiYong Inj : 1
 Spec. Reported : MS Integration Inj Volume : 1.5 ul
 Acq. Method : E:\Chem32\1-Methods\1-POS-UPLC5.0MIN(0.8ML)-(150-2000)polar.M
 Analysis Method : E:\CHEM32\1\METHODS\1-POS-UPLC5.0MIN(0.8ML)-(150-2000)polar.M
 CAS NO. : 542-44-9 WalkUp method: '1-POS-5MIN(150-2000)polar' Project: LY2022
 Method Info : Mobile Phase: A: water(0.01%TFA) B:ACN(0.01%TFA)
 Gradient: 5% to 95%B within 1 min
 Flow Rate : 0.8ml/min
 Column :Poroshell 120 EC- C18, 2.1*50mm,1.9um
 Oven Temperature : 45C

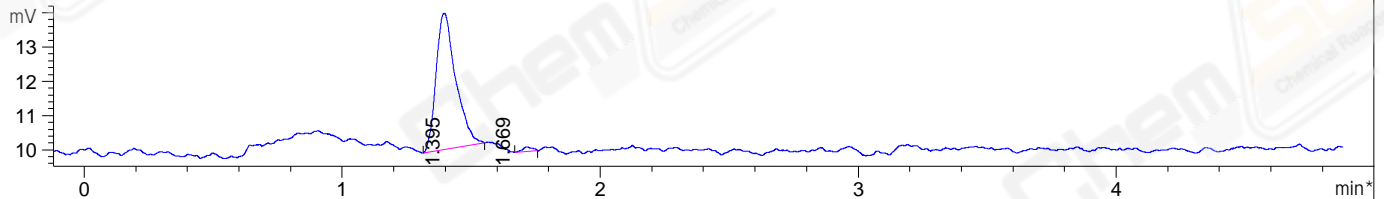
DAD1 A, Sig=214,4 Ref=off



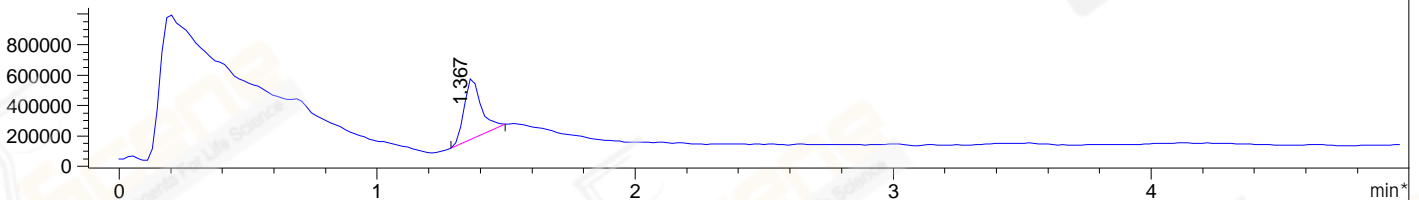
DAD1 B, Sig=254,4 Ref=off



*ELS1 A, ELSD Signal



*MSD1 TIC, MS File ES-API, Pos, Scan, Frag: 70



Integration Results for DAD1 A, Sig=214,4 Ref=off

RetTim	Width	Area	Height	Area%	MS (+)
--------	-------	------	--------	-------	--------

Integration Results for DAD1 B, Sig=254,4 Ref=off

RetTim	Width	Area	Height	Area%	MS (+)
--------	-------	------	--------	-------	--------

Integration Results for ELS1 A, ELSD Signal

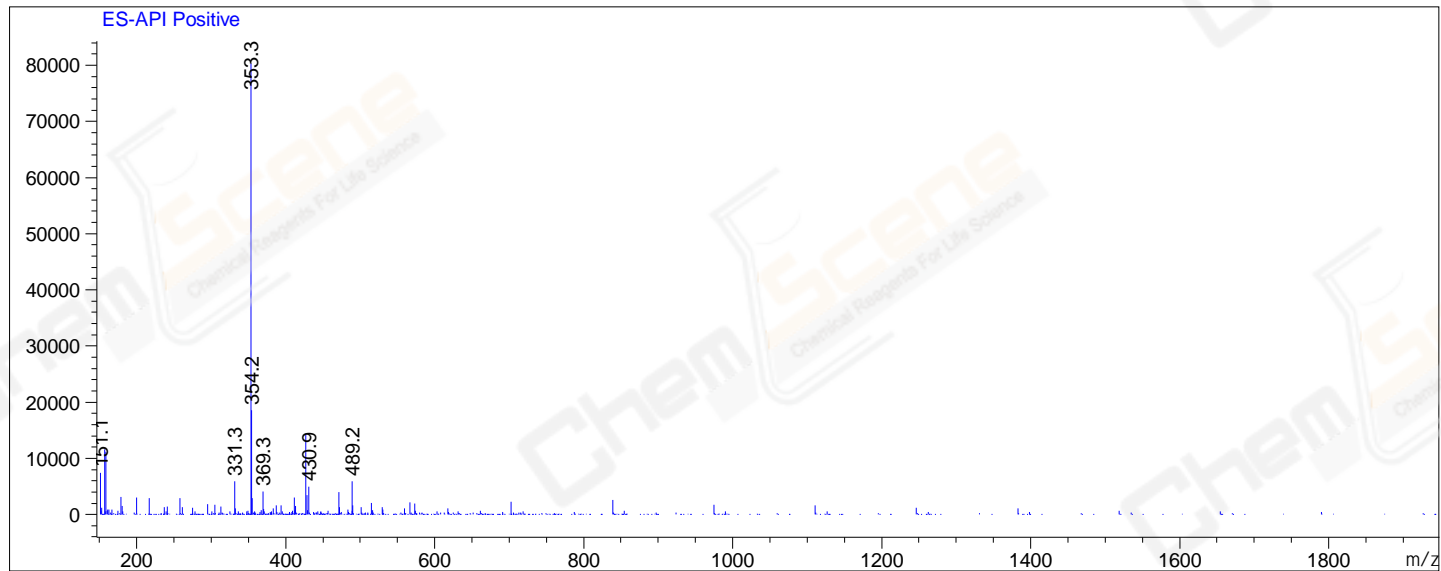
RetTim	Width	Area	Height	Area%	MS (+)
1.40	0.07	21.08	3.98	98.27	353
1.67	0.04	0.37	0.01	1.73	159

Integration Results for MSD1 TIC, MS File

RetTim	Width	Area	Height	Area%	MS (+)
1.37	0.07	1816435.63	400804.19	100.00	353

Ret. Time: 1.37

<<<< POSITIVE SPECTRA >>>>



*** End of Report ***