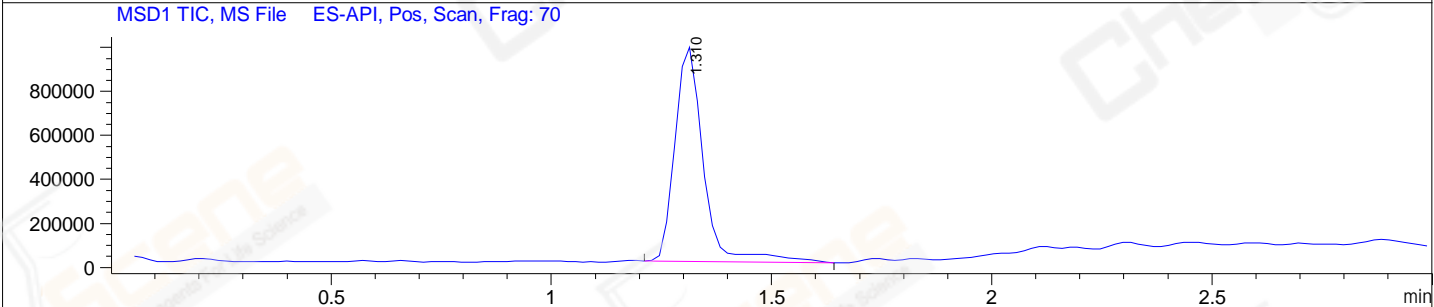
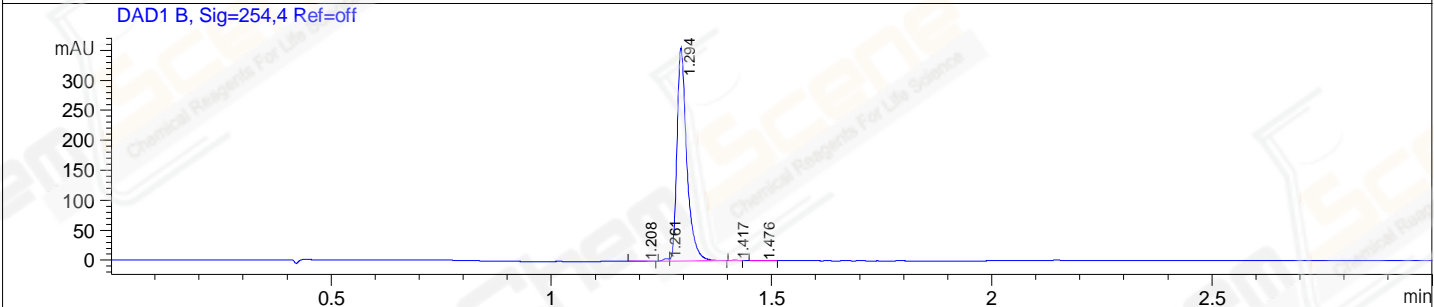
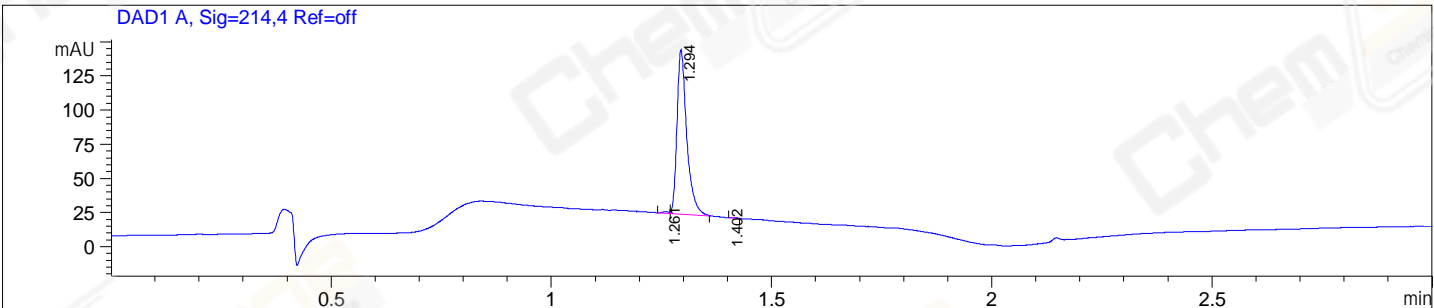


File E:\ChemStation\1\DATA\2023\2023-05\2023-05-23\BIZ2023-523-WLQ29-LCMS-20-004656.D

Injection Date : 23-May-23, 18:16:12 Tgt Mass(EZX) :
 Sample Name : BIZ2023-523-WLQ29 Location : P2-B-07
 Acq. Operator : LY_2278 Inj : 1
 Spec. Reported : MS Integration Inj Volume : 3 ul
 Acq. Method : E:\ChemStation\1\Methods\1-POS-3MIN(1.8ML)-(150-1000).M
 Analysis Method : E:\CHEMSTATION\1\METHODS\1-POS-3MIN(1.8ML)-(150-1000).M
 CAS NO. : 52-39-1
 Method Info : Mobile Phase: A: water(0.01%FA) B:ACN(0.01%FA)
 Flow Rate :1.8ml/min
 Column :SunFire C18, 4.6*50mm,3.5um
 Oven Temperature : 45C



Integration Results for DAD1 A, Sig=214,4 Ref=off

RetTim	Width	Area	Height	Area%
1.26	0.02	1.35	1.35	0.72
1.29	0.03	185.27	120.30	99.10
1.40	0.01	0.34	-0.07	0.18

Integration Results for DAD1 B, Sig=254,4 Ref=off

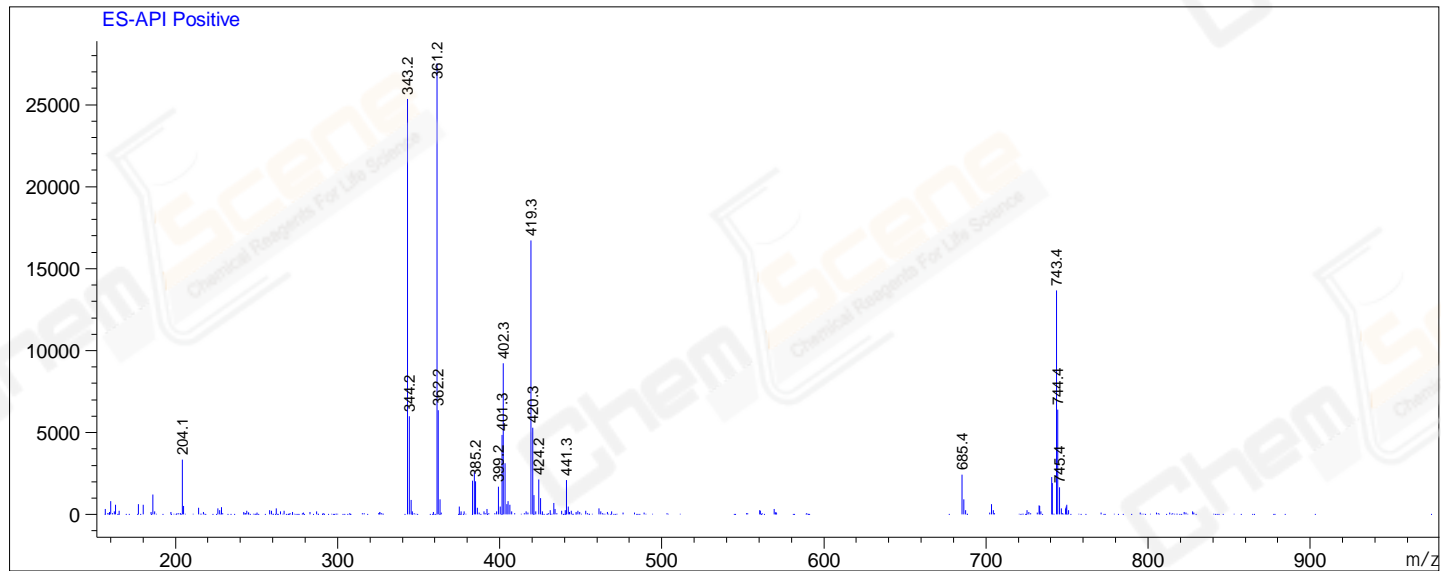
RetTim	Width	Area	Height	Area%
1.21	0.03	0.71	0.37	0.13
1.26	0.02	3.80	4.20	0.68
1.29	0.03	551.15	355.14	98.89
1.42	0.01	0.81	0.99	0.15
1.48	0.03	0.88	0.42	0.16

Integration Results for MSD1 TIC, MS File

RetTim	Width	Area	Height	Area%
1.31	0.07	4416697.00	981884.88	100.00

Ret. Time: 1.31

<<<< POSITIVE SPECTRA >>>>



*** End of Report ***