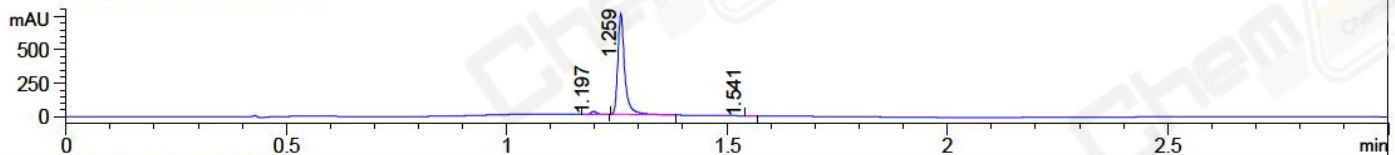
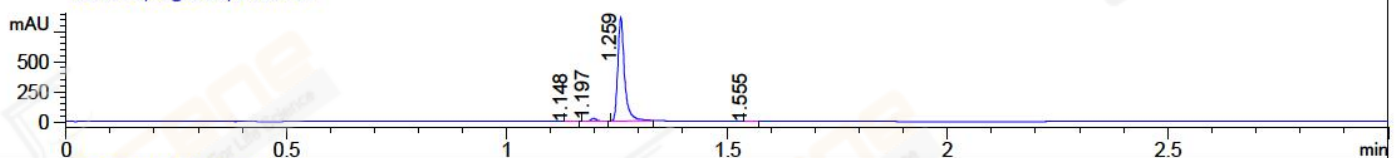


File ..\Data\20171025\20171025\BIZ2017-025-WYQ12.D Tgt Mass (CHM):  
 Injection Date : 25 Oct 17 2:38 pm +0800 Seq. Line : 73  
 Sample Name : BIZ2017-025-WYQ12 Location : P2-A-01  
 Acq. Operator : SYSTEM Inj : 1  
 Spec. Reported : MS Integration Inj Volume : 1 ul  
 Acq. Method : D:\LCMS03\Data\20171025\20171025\1-POS-3MIN.M  
 Analysis Method : D:\LCMS03\Data\20171025\20171025\1-POS-3MIN.M  
 Catalog No : CS-2823 Batch#26832  
 Method Info : Mobile Phase: A: water(0.01%TFA) B:ACN(0.01%TFA)  
 Gradient: 5% to 95%B within 1.3 min  
 Flow Rate :1.8ml/min  
 Column :SunFire C18, 4.6\*50mm,3.5um A-RP-186  
 Oven Temperature : 45C

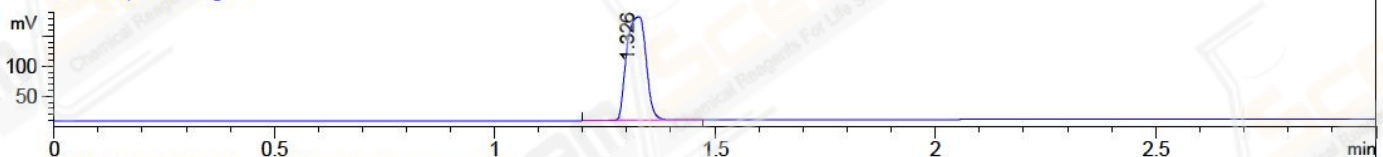
DAD1 A, Sig=214,4 Ref=off



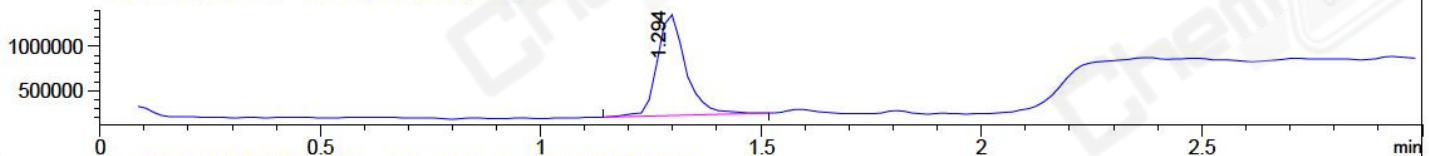
DAD1 B, Sig=254,4 Ref=off



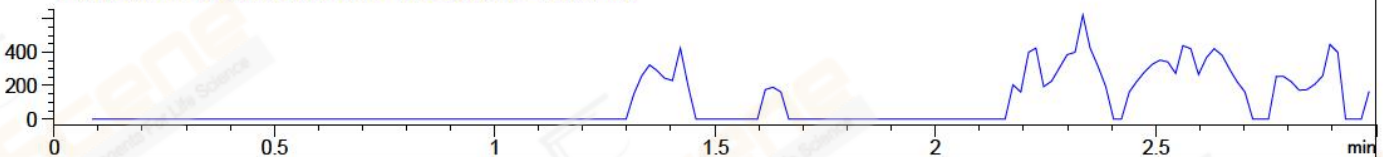
ELS1 A, ELSD Signal



MSD1 TIC, MS File ES-API, Pos, Scan, Frag: 70



Ion 745, MSD1 745, Target Mass 744 +H Positive, EIC=744.7:745.7



Integration Results for DAD1 A, Sig=214,4 Ref=off

RetTim	Width	Area	Height	Area%	MS (+)
1.20	0.01	18.89	21.79	2.25	225
1.26	0.02	820.24	753.94	97.62	685
1.54	0.02	1.09	0.53	0.13	225

Integration Results for DAD1 B, Sig=254,4 Ref=off

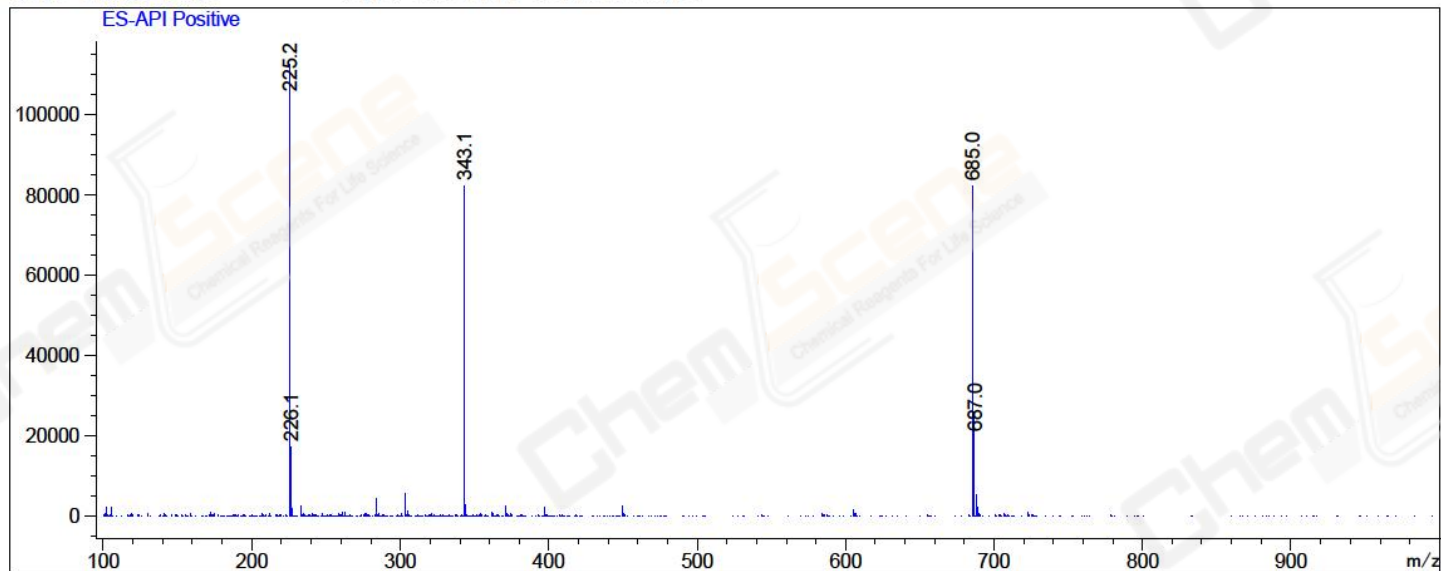
RetTim	Width	Area	Height	Area%	MS (+)
1.15	0.02	0.16	0.17	0.02	225
1.20	0.01	20.84	24.78	2.20	225
1.26	0.02	927.36	865.60	97.76	685
1.56	0.01	0.20	0.22	0.02	225

Integration Results for MSD1 TIC, MS File

RetTim	Width	Area	Height	Area%	MS (+)
1.29	0.07	5109472.50	1147185.13	100.00	225

Ret. Time: 1.29

<<<< POSITIVE SPECTRA >>>>



\*\*\* End of Report \*\*\*