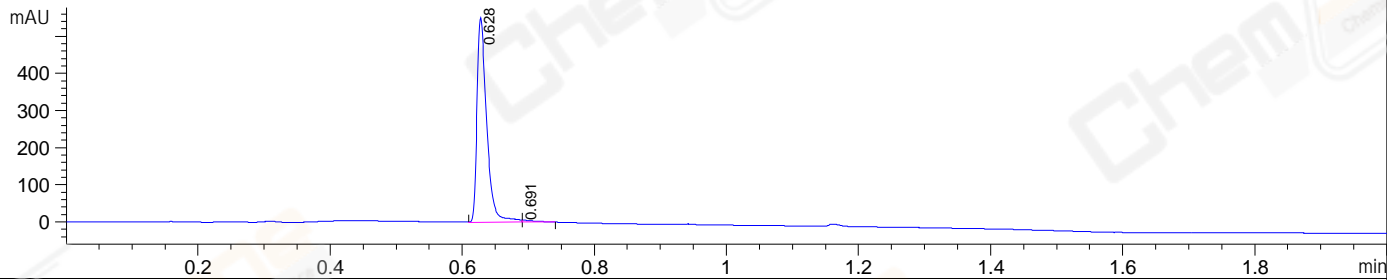
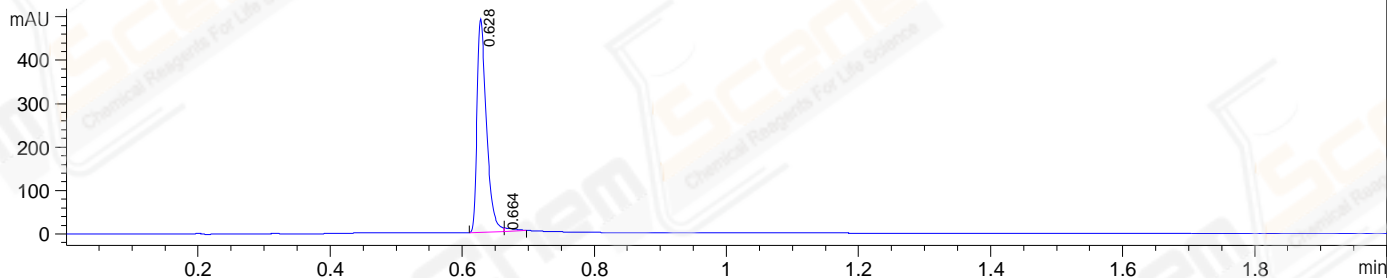


File F:\data\2023\2023-05\2023-05-16\ZSS23789-001-3-UPLC-MS-05-006847.D
 Injection Date : 16-May-23, 17:59:40 Tgt Mass(EZX) :
 Sample Name : ZSS23789-001-3 Location : P1-A-02
 Acq. Operator : LY_2278 Inj : 1
 Spec. Reported : MS Integration Inj Volume : 0.2 ul
 Acq. Method : D:\methods\1-POS-UPLC2.0MIN(0.8)(150-1000).M
 Analysis Method : D:\METHODS\1-POS-UPLC2.0MIN(0.8)(150-1000).M
 CAS NO. : 842148-40-7 WalkUp method: '1-POS-2MIN' Project: LD1756
 Method Info : Mobile Phase: A: water(0.01%TFA) B:ACN(0.01%TFA)
 Gradient: 5% to 95%B within 1.3 min
 Flow Rate : 0.8ml/min
 Column :Poroshell 120 EC- C18, 2.1*50mm,1.9um
 Oven Temperature : 45C

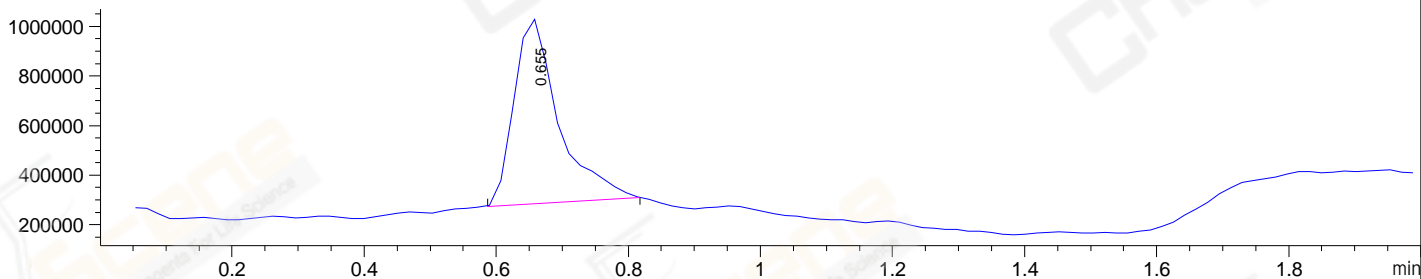
DAD1 A, Sig=214,4 Ref=off



DAD1 B, Sig=254,4 Ref=off



MSD1 TIC, MS File ES-API, Pos, Scan, Frag: 70



Integration Results for DAD1 A, Sig=214,4 Ref=off

RetTim	Width	Area	Height	Area%
0.63	0.02	561.94	552.84	98.72
0.69	0.02	7.26	5.58	1.28

Integration Results for DAD1 B, Sig=254,4 Ref=off

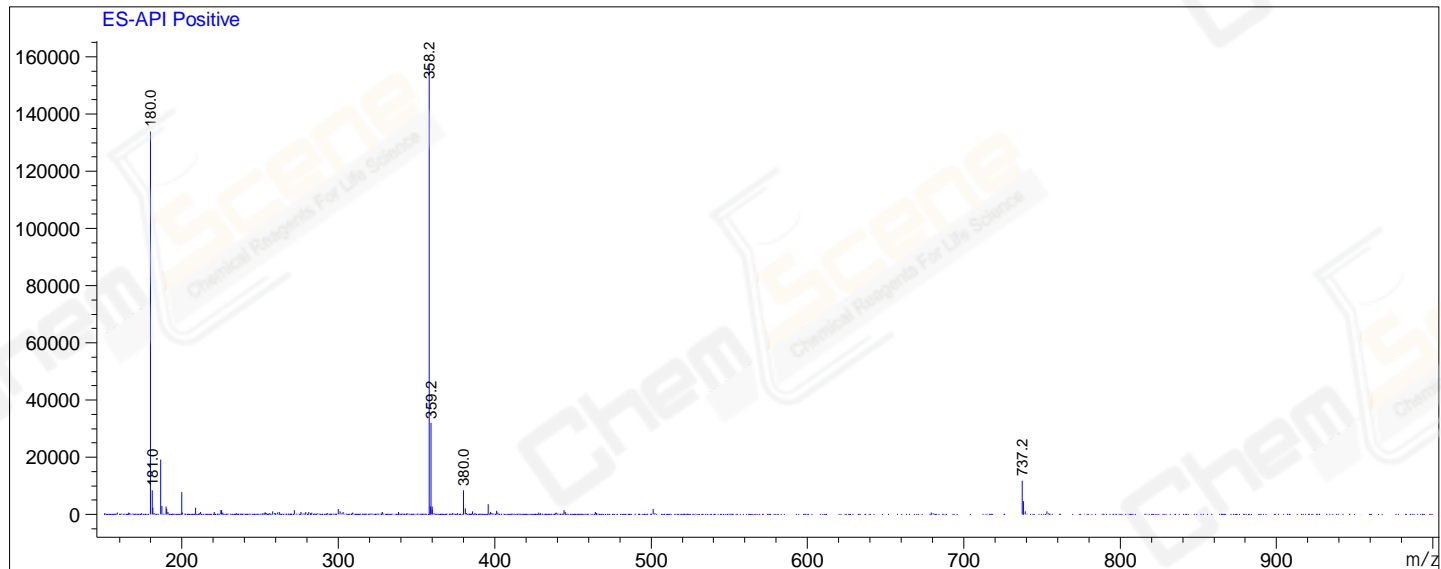
RetTim	Width	Area	Height	Area%
0.63	0.02	487.08	492.28	98.42
0.66	0.02	7.83	7.86	1.58

Integration Results for MSD1 TIC, MS File

RetTim	Width	Area	Height	Area%
0.65	0.08	3506979.75	761161.06	100.00

Ret. Time: 0.65

<<<< POSITIVE SPECTRA >>>>



*** End of Report ***