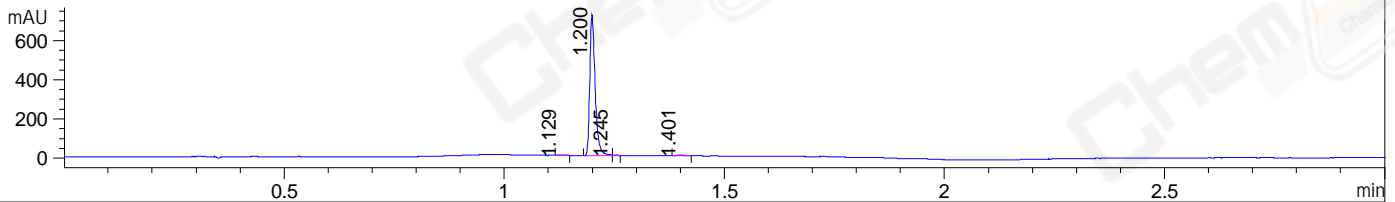
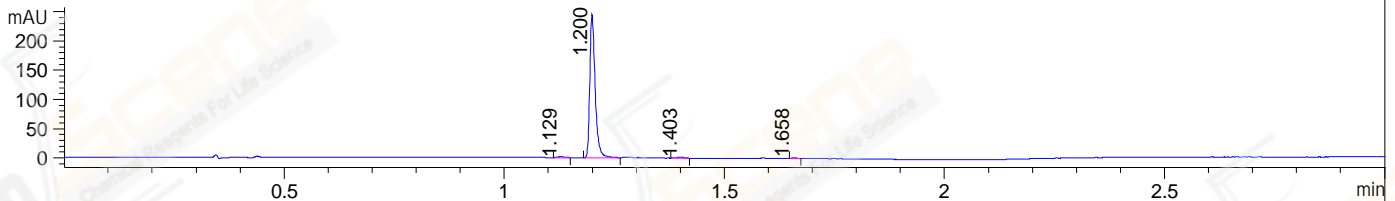


File ..\DATA\2020\20200601\981\CPK2020-528-26952.D Tgt Mass (CHM):
 Injection Date : 1 Jun 20 11:44 am +0800 Seq. Line : 36
 Sample Name : CPK2020-528-26952 Location : P1-B-06
 Acq. Operator : ZJ_1432 Inj : 1
 Spec. Reported : MS Integration Inj Volume : 1 ul
 Acq. Method : D:\Chem32\1\data\2020\20200601\981\1-POS-3MIN.M
 Analysis Method : D:\CHEM32\1\DATA\2020\20200601\981\1-POS-3MIN.M
 Catalog No : CS-5608
 Method Info : Mobile Phase: A: water(0.01%TFA) B:ACN(0.01%TFA)
 Gradient: 5% to 95%B within 1.3 min
 Flow Rate :1.8ml/min
 Column :SunFire C18, 4.6*50mm,3.5um A-RP-607
 Oven Temperature : 45□

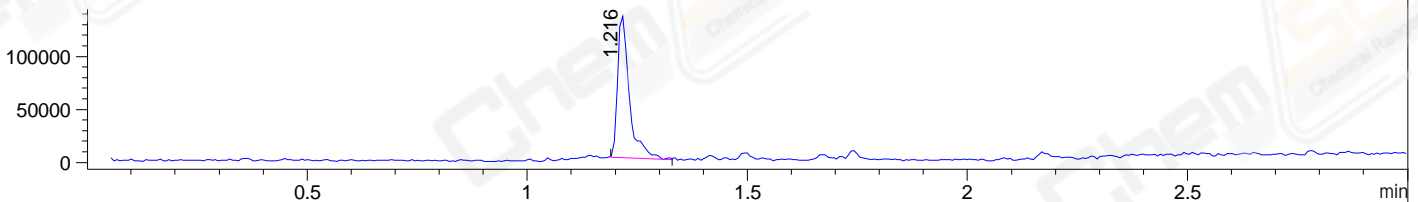
DAD1 B, Sig=214,4 Ref=off



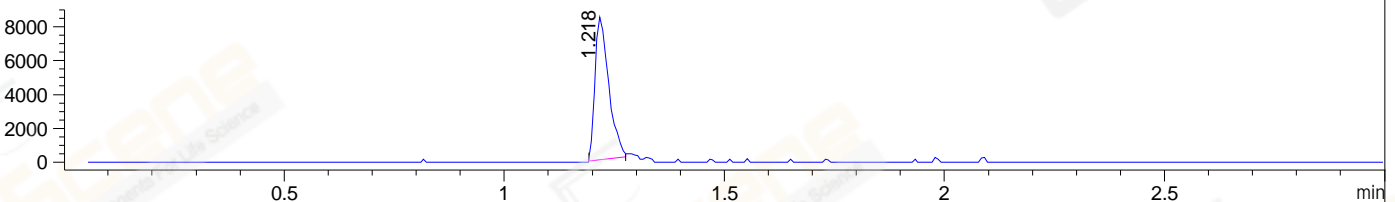
DAD1 C, Sig=254,4 Ref=off



MSD1 TIC, MS File ES-API, Pos, Scan, Frag: 70



Ion 493, MSD1 493, Target Mass 492 +H Positive, EIC=492.7:493.7



Integration Results for DAD1 B, Sig=214,4 Ref=off

RetTim	Width	Area	Height	Area%	MS (+)
1.13	0.02	2.55	2.63	0.41	ND
1.20	0.01	608.65	720.75	98.38	247
1.25	0.01	1.92	3.52	0.31	247
1.40	0.02	5.56	5.07	0.90	ND

Integration Results for DAD1 C, Sig=254,4 Ref=off

RetTim	Width	Area	Height	Area%	MS (+)
1.13	0.02	1.49	1.52	0.70	ND
1.20	0.01	207.49	245.69	98.24	247
1.40	0.02	1.59	1.61	0.75	ND
1.66	0.02	0.64	0.66	0.30	229

Integration Results for MSD1 TIC, MS File

RetTim	Width	Area	Height	Area%	MS (+)
1.22	0.03	249932.41	134797.47	100.00	247

Ret. Time: 1.22

<<<< POSITIVE SPECTRA >>>>

